

Université de Montréal

Utilisation de lymphocytes T en thérapie cellulaire pour le
traitement de la néphropathie au polyomavirus BK chez les
greffés rénaux

par Caroline Lamarche, MD

Programme des Sciences Biomédicales
Faculté de Médecine

Mémoire présenté à la Faculté des études supérieures
en vue de l'obtention du grade de Maîtrise en Sciences (M.Sc)
en Sciences Biomédicales
option Générale

Août 2016

© Caroline Lamarche, 2016

RÉSUMÉ

Le polyomavirus BK est un virus très prévalent qui demeure normalement en phase de latence dans l'uroépithélium sans entraîner de complications. Chez les greffés rénaux, il peut cependant se réactiver et mener à une néphropathie pouvant nuire à la survie du greffon. L'immunité du receveur est la pierre angulaire de la prévention et du traitement de cette néphropathie, puisque le seul traitement démontré efficace est une diminution de l'immunosuppression. Cependant, une augmentation non spécifique de l'immunité augmente également le risque de rejet. Notre objectif était donc d'adapter et de valider un protocole transférable en clinique d'immunothérapie adoptive antivirale nous permettant de produire des lignées de lymphocytes T BK-virus spécifiques à partir du sang de patients greffés virémiques, afin de prévenir et traiter ces néphropathies. Nous avons tout d'abord comparé les lignées cellulaires produites à partir de donneurs sains à celles de patients immunosupprimés soumis à une immunosuppression chronique. Par la suite, nous avons adapté le protocole en ajoutant une stimulation à l'aide de cellules dendritiques afin de maximiser l'expansion cellulaire, le statut de différenciation et la spécificité. Bien que les lignées étaient polyclonales, elles n'ont pas démontré de potentiel alloréactif *in vivo* et *in vitro*, et ce, malgré une persistance et une prolifération *in vivo*. Nous avons donc élaboré un protocole qui est prêt à être transféré en étude clinique de phase I/II et qui pourrait nous permettre de prévenir et traiter la néphropathie associée au polyomavirus BK, sans augmenter le risque de rejet.

Mots clés: BK polyomavirus, transplantation rénale, immunothérapie, thérapie cellulaire, néphropathie associée au polyomavirus

ABSTRACT

More than 75% of the population has been exposed to BK polyomavirus and carries latent virus in the uroepithelium without any complications. However, it can reactivate in kidney transplant recipients (KTR) and lead to a nephropathy affecting graft survival. Recipient anti-viral immunity is the cornerstone of BK-virus associated nephropathy prevention and treatment and thus, reduction of immunosuppression is the only well-accepted treatment. Adoptive immunotherapy is a promising solution to this problem, allowing a specific T cell mediated response against this virus without the alloreactive risk. It was demonstrated efficacious for other viral infections in immunocompromised hosts but it has not been used in this specific context. Our objective was to adapt and validate a clinical-compliant protocol to obtain BK-specific T cell lines from viremic KTR and to compare their expansion, differentiation and specificity to ones obtained from healthy donors. Although comparable specificity and differentiation status, cell expansions from KTR were not systematically sufficient for a therapeutic dose. The addition of a stimulation with dendritic cells improved cell expansion in addition to favors a central memory phenotype and refined BK-specificity. Despite polyclonality, T cell lines didn't demonstrated alloreactivity in a chromium release assay and *in vivo*. Furthermore, T cell lines could persist and proliferates *in vivo*. This protocol is ready for a phase I/II clinical trial. This opens the possibility to solve the current conundrum and treat PVAN without increasing rejection risk.

Keywords: BK polyomavirus, kidney transplant, cellular therapy, immunotherapy, polyomavirus-associated nephropathy

RÉSUMÉ DE VULGARISATION

La greffe rénale permet d'améliorer la survie des patients souffrant d'insuffisance rénale terminale. Dans les dernières décennies, la survie du greffon s'est beaucoup améliorée, notamment grâce à des immunosuppresseurs (anti-rejets) plus puissants. Cependant, l'affaiblissement du système immunitaire entraîne une augmentation du risque de certaines infections, notamment le polyomavirus BK.

Une grande proportion de la population a contracté ce virus durant l'enfance et il demeure latent (inactif) dans les reins et les uretères (conduits entre les reins et la vessie), sans entraîner de complications. Par contre, chez les greffés rénaux, l'affaiblissement du système immunitaire fait en sorte que le virus peut se réactiver et entraîner des dommages pouvant évoluer jusqu'à la perte du greffon. Pour l'instant, le seul traitement démontré efficace consiste à diminuer les immunosuppresseurs, mais cela augmente le risque de rejet. Une solution consisterait à prélever les lymphocytes (globules blancs), de les éduquer à combattre le virus en laboratoire et ensuite de les ré-injecter au patient. Il s'agit donc de redonner au patient son propre système immunitaire, mais apte à contrôler le virus. Nous avons donc développé un protocole nous permettant de produire des lignées de lymphocytes T éduqués contre le polyomavirus BK (spécifiques), de bonne qualité et en quantité suffisante pour traiter un patient, à partir du sang de patient greffé ayant un virus actif. De plus, elles sont sécuritaires, donc n'entraîneraient pas de rejet de greffon. Nous sommes maintenant prêts à en faire une étude clinique pour le tester chez des patients.

TABLE DES MATIÈRES

RÉSUMÉ	II
ABSTRACT	III
RÉSUMÉ DE VULGARISATION	IV
Liste des figures	VII
Liste des abréviations	VIII
REMERCIEMENTS	XI
INTRODUCTION	1
1 - La transplantation rénale	2
1.1 Mise en contexte	2
1.2 Alloréactivité	3
1.3 Immunosuppression	6
1.4 Infections	8
2 - Le polyomavirus BK	10
2.1 BK polyomavirus and the transplanted kidney; immunopathology and therapeutic approaches	10
Abstract	13
Introduction	14
1. Epidemiology and diagnosis of PVAN	16
2. Virology and pathogenesis of BK	18
3.1 Environmental factors and the inception of PVAN	22
3.2 Immunology of PVAN	23
4. Current Therapeutic approaches	31
5. Perspectives	36
Conclusion	38
References	39
Table 1.	62
Figures	63
3- Immunothérapie adoptive	67
3.1 Mise en contexte	67

3.2 Efficacité / Innocuité	69
3.3 Différenciation des lymphocytes T	70
3.4 Résumé	73
RÉSULTATS	74
4.1 Clinical-scale Rapid Autologous BK-virus Specific T cell Line generation from Kidney Transplant Recipients with Active Viremia for Adoptive Immunotherapy	75
Abstract	77
Introduction	79
Materials and Methods	81
Results	85
Discussion	90
Acknowledgments	93
Disclosure	94
Figures	95
Description of Supporting Information	99
References	100
Supplementary Table 1.	111
Supplementary Figure 1.	112
DISCUSSION ET PERSPECTIVES	113
CONCLUSION	121
Références	123

LISTE DES FIGURES

Figure 1. Médicaments immunosuppresseurs utilisés en greffe rénale et leur site d'action selon le modèle des trois-signaux

Figure 2. Immunothérapie adoptive

Figure 3. Différenciation des lymphocytes T

LISTE DES ABRÉVIATIONS

BrdU, 5-Bromo-2'-deoxyuridine

CMH, Complexe majeur d'histocompatibilité

CMV, Cytomégalovirus

DC, Cellule dendritique

EBV, Epstein-Barr virus

ELISpot, Essai d'immunospot enzymatique

ERE, Élément de réponse oestrogénique

GRE/PRE, Élément de réponse glucocorticoïde et/ou progestatif

GVHD, Maladie du greffon contre l'hôte

HC, Control sain

HCV, Virus de l'hépatite C

HSV, Virus de l'herpes simplex

HLA, Antigènes des leucocytes humains

HPV, Papillomavirus humain

HSCT, Transplantation de cellules souches hématopoïétiques

ICAM, Molécule d'adhésion intracellulaire

IFN- γ , Interferon- γ

IRT, Insuffisance rénale terminale

IVIG, Immunoglobuline intraveineuse

KDIGO, Kidney Disease | Improving Global Outcomes

KIR, Récepteur *killer cell immunoglobulin-like*

KTR, Receveur d'une transplantation rénale

LT, Large tumoral

LTA, Antigène large tumoral

MCP, Protéine chimiotactique monocyttaire

MIP, Protéines inflammatoires de macrophages

MPA, Acide mycophénolique

mRNA, ARM messenger

NCCR, Région de contrôle non-codante

NK, *Natural killer*

NSG, NOD/SCID/IL2R γ ^{null}

PBMC, Cellules mononucléaires du sang périphérique

PCR, Réaction de polymérase en chaîne

PTLD, Syndrome lymphoprolifératif post-transplantation

PVAN, Néphropathie associée au polyomavirus

RCITO, Registre canadien des insuffisances et des transplantations d'organes

SV40, Simian virus 40

TCR, Récepteurs des lymphocytes T

Tcm, Lymphocyte T central mémoire

Tem, Lymphocyte T effecteur mémoire

TGF, *Transforming growth factor*

Tn, Lymphocyte T naif

TNF- α , *Tumor necrosis factor- α*

Tscm, Lymphocyte T cellule souche mémoire

VIH, Virus d'immunodéficience humaine

VP, Protéine encodant le virus

REMERCIEMENTS

Je voudrais remercier Dr Jean-Sébastien Delisle, mon directeur de recherche pour ses précieux conseils, son écoute et son appui ainsi que tous les membres du laboratoire qui m'ont accompagné dans ce processus.

Je voudrais également remercier Dr Vincent Pichette et Dre Marie-Josée Hébert pour leur mentorat dans ma jeune carrière de recherche et pour être des modèles de rôles positifs comme cliniciens-chercheurs.

Finalement, je voudrais remercier les membres du Conseil des Médecins, Dentistes et Pharmaciens pour avoir cru en mon potentiel en recherche et pour leur soutien financier.

INTRODUCTION

1 - La transplantation rénale

1.1 Mise en contexte

L'insuffisance rénale chronique est définie comme la présence d'anomalies dans la structure ou la fonction des reins, présents pour une période de plus de 3 mois et ayant des implications pour la santé (1). L'insuffisance rénale terminale (IRT), quant à elle, se définit comme une fonction rénale insuffisante pour maintenir un individu en vie. Afin de survivre, une thérapie de remplacement rénal sera nécessaire, soit sous la forme de dialyse ou de transplantation rénale (2). En 2013, au Canada, selon le dernier rapport du registre canadien des insuffisances et des transplantations d'organes (RCITO), plus de 40 000 Canadiens souffraient d'IRT. De ces derniers, 57,5% recevaient un traitement de dialyse et 42,5% avaient un greffon rénal (3). Les causes principales d'IRT au Canada sont le diabète, les glomérulonéphrites et les maladies vasculaires rénales (3).

Malgré ces thérapies de remplacement de la fonction rénale, l'IRT demeure une maladie chronique morbide et mortelle. En effet, la survie à 5 ans en dialyse n'est que de 44,8% selon les dernières données canadiennes (3), ce qui est inférieur à la survie avec un cancer du sein pour les stades non métastatiques (0-III) (4). Après une transplantation rénale, cette survie augmente à 89,2% pour les patients ayant reçu un rein provenant d'un donneur vivant et 82,6% pour un donneur décédé (3). Bien que les patients admissibles à une transplantation sont généralement en meilleure santé et ont une espérance de vie en dialyse supérieure aux patients qui ne sont pas

admissibles, leur risque relatif de mortalité est diminué de 32% à 18 mois seulement après une transplantation (5).

Au Québec seulement, en 2015, il y a eu 297 reins transplantés. Cependant, encore 613 patients étaient en attente de transplantation rénale (6). La survie de la greffe n'est pas éternelle. En effet, en 2005 aux États-Unis, la demi-vie d'un greffon était de 8.8 ans pour les greffes de donneurs décédés et 11.9 ans pour celles de donneurs vivants (7). De plus, environ 13% des patients inscrits sur la liste d'attente de transplantation aux États-Unis le sont suite à la perte de leur greffon (8). Considérant l'avantage de la transplantation rénale, l'énorme besoin au sein de notre population et la rareté de la ressource, il est d'autant plus important de combiner nos efforts afin de prolonger la longévité d'un greffon.

1.2 Alloréactivité

Après une transplantation allogénique, donc entre deux membres non identiques d'une même espèce, le principal risque à la survie de l'organe est son rejet. De façon précoce après la transplantation, il y aura d'abord une atteinte par le système immunitaire inné et plusieurs médiateurs inflammatoires, suivi par une réponse immunitaire adaptative, antigène spécifique.

Le risque de rejet est accru dans les premiers jours suivant la transplantation puisque le prélèvement de l'organe et la transplantation entraînent inévitablement des lésions d'ischémie-reperfusion menant à une augmentation de l'expression des antigènes

des leucocytes humains (HLA) et la relâche de chimiokines telles que GRO/CXCL1, MCP1, MIP-1 et IP-10, de cytokines telles que TNF- α , IFN- γ , IL-2 et IL-6, et des molécules d'adhésions dans la greffe telles que le CD11/CD18 et ICAM-1 (9, 10). L'activation des cellules immunitaires innées causera alors du dommage soit directement ou indirectement via l'activation et le recrutement de lymphocytes T.

Les cellules dendritiques (DC) seront les principales cellules présentatrices d'antigènes pour activer les lymphocytes T. Lorsque matures, les DC du donneur (voie directe) ou du receveur (voie indirecte) migrent dans les organes lymphoïdes secondaires et présentent un allo-antigène aux récepteurs des lymphocytes T (TCR) via leur complexe majeur d'histocompatibilité (CMH). Le contact entre le TCR, le peptide et le CMH correspond au premier signal d'activation des lymphocytes T. Pour compléter l'activation, ils fourniront également des signaux de costimulation (signal 2). La production de cytokines est également importante (signal 3).

Les lymphocytes T CD4⁺ ayant été activés contribueront également à l'activation d'autres cellules telles que les macrophages, les lymphocytes B et les lymphocytes T CD8⁺, perpétuant ainsi l'inflammation et le dommage cellulaire à la greffe.

Normalement, un lymphocyte T ne reconnaît pas un antigène directement, mais seulement lorsqu'elle est présentée dans un CMH du soi. Cependant, puisque les variations alléliques entre les différents CMH sont petites, les TCR du receveur peuvent avoir une forte affinité pour un CMH intact du donneur et peuvent le

reconnaitre directement. Normalement, seulement 1 lymphocyte T sur 10 000 ou sur 1 000 000 va répondre à un certain antigène. Cependant, en transplantation, 5-10% des lymphocytes T vont répondre à une molécule CMH étrangère (11). Ce phénomène est particulièrement important en greffe rénale puisque les HLA ne sont que rarement appareillés entre le donneur et le receveur. Voilà pourquoi la plupart des traitements immunosuppresseurs en transplantation ciblent les lymphocytes T.

Le rejet d'un organe après la transplantation ne semble pas être la seule conséquence d'une reconnaissance du système immunitaire de l'organe comme le "non-soi". En effet, notre système immunitaire tolère plusieurs protéines étrangères inertes (par exemple dans l'alimentation) ainsi que plusieurs protéines du soi qui n'étaient pas présentes lors de la sélection négative qui permet d'éliminer les lymphocytes réagissant contre des antigènes du soi dans le thymus (tel que les hormones lors de la puberté). En effet, selon la théorie du danger élaborée par Polly Matzinger, le système immunitaire est d'abord activé par la perception de signaux de dangers (12). Ces signaux d'alarme sont multiples et peuvent être relâchés suite à un stress, un dommage ou lors de la nécrose cellulaire. Il peut s'agir de protéines de choc thermique, de nucléotides, de produits de dégradation de la matrice extracellulaire, de cytokines, etc (13). Lors d'une transplantation, les cellules présentatrices d'antigènes sont donc activées par ces signaux d'alarmes endogènes libérés par les cellules en détresse ou détruites, inévitablement présents suite au dommage d'ischémie-reperfusion. Cette théorie permet d'expliquer pourquoi une transplantation utilisant un organe d'un donneur vivant a un meilleur pronostic qu'une

transplantation utilisant un organe d'un donneur cadavérique pour un même degré de concordance HLA (14).

1.3 Immunosuppression

Une grande partie du succès de la transplantation est secondaire au succès de l'immunosuppression utilisée en induction et en maintenance. En effet, au cours des dernières décennies, la survie moyenne des greffons s'est nettement améliorée, avec une probabilité de perte de greffon à 5 ans qui est passée de 36,2% en 1996 à 26,9% en 2008 (8) et le taux de rejet aigu a diminué à environ 15-20% (15). En général, les différents immunosuppresseurs diminuent ou bien le nombre absolu de lymphocytes, tel que les immunoglobulines anti-thymocytes humains, ou leur fonction, en altérant un des 3 signaux précédemment décrits. La figure 1 démontre les différents immunosuppresseurs utilisés en greffe rénale, selon ce modèle.

De façon courante, les anticorps monoclonaux dirigés contre la sous-unité alpha du récepteur de l'IL-2 (CD25) (basiliximab) ou les immunoglobulines anti-thymocytes sont utilisés en association avec les corticostéroïdes comme agents d'induction selon le risque immunologique du patient. Par la suite, le patient est mis sous une triple thérapie consistant en de la prednisone, un inhibiteur de la calcineurine (préférentiellement le tacrolimus) et un anti-métabolite, souvent l'acide mycophénolique (MPA).

Cependant, en plus de leur action thérapeutique (diminution du risque de rejet), l'utilisation d'immunosuppresseurs plus puissants entraîne des conséquences liées à l'immunodéficience tel que les infections et les cancers ainsi que de la toxicité cellulaire non liés à leur effet immun (hypertension artérielle, diabète...).

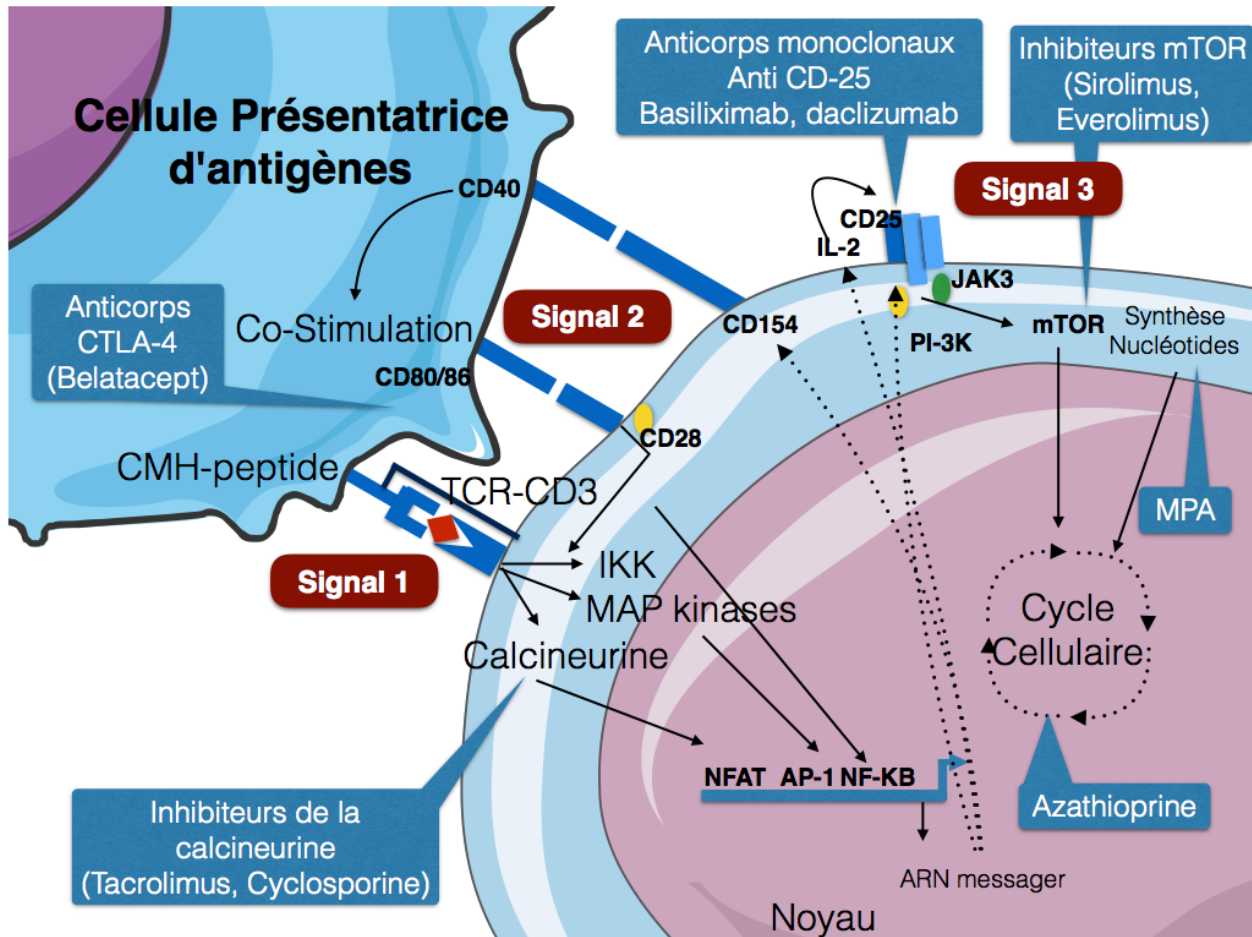


Figure 1. Médicaments immunosuppresseurs utilisés en greffe rénale et leur site d'action selon le modèle des trois-sinaux, *adapté de Halloran PF, NEJM 2004 (16).*

MPA, Acide mycophénolique.

1.4 Infections

Les infections sont une cause importante de mortalité et morbidité après une transplantation. En effet, ils sont la deuxième cause de mortalité chez les patients avec un greffon fonctionnel (17). Le taux d'infection par année durant les trois premières années après la greffe est d'environ 45% (18). L'utilisation d'immunosuppresseurs augmente le risque de toutes sortes d'infections, soit virale, bactérienne, fongique et parasitaire, de façon dépendante du temps après la greffe. Dans le premier mois après la greffe, il y a surtout le risque d'infection nosocomiale, pneumonie d'aspiration, infection de cathéter ou de plaie, colite à *C. difficile*, le risque d'infections provenant du donneur tel que le VIH ou l'HSV ou encore les infections reliées au receveur s'il était colonisé avant la greffe avec de l'aspergillus ou du pseudomonas. Normalement, les donneurs infectés par le VIH ou l'hépatite C ne sont pas utilisés en transplantation. Malheureusement, si l'infection est très récente, elle peut être manquée au moment du dépistage et être transmise au receveur. Entre 1 et 6 mois, les infections les plus fréquentes sont virales, telles que de la famille des herpesvirus (HSV, VZV, cytomégalovirus (CMV), Epstein-Barr virus (EBV)), l'HPV, le BK, l'adénovirus et l'influenza. Il peut s'agir de la réactivation d'un virus latent, d'un virus transmis par le donneur ou plus rarement d'une infection acquise dans la communauté. Également, il y a le risque de *Pneumocystis*, *C difficile*, *Cryptococcus*, *Mycobacterium tuberculosis*, *Listeria*, *Nocardia*, toxoplasmose, strongyloïdes, leishmaniose ou *Toxoplasma cruzi*. Afin de minimiser la transmission de virus par le donneurs, la présence de plusieurs virus est évaluée avant la transplantation et les donneurs peuvent être rejetés sur la base de la présence de certains virus tels le VIH

et l'hépatite C. Cependant, il arrive parfois que la présence de ces virus ne soit pas démasquée, principalement si l'infection est très récente. Finalement, après 6 mois il y a les pneumonies acquises en communauté, les infections urinaires, l'aspergillus, les moisissures atypiques, le mucor, la *Nocardia*, le *Rhodococcus* et toujours plusieurs infections virales telles que le CMV, HBV, HCV, HSV, JC et EBV (19).

L'utilisation d'immunosuppresseurs plus puissants a altéré la prévalence et la cinétique de plusieurs infections. De plus, cela a amené l'émergence de nouveaux types d'infections, telle la néphropathie au polyomavirus BK, qui peut être un réel danger pour le greffon (20).

Puisque le rejet représente le risque le plus important pour la survie du greffon et que la dose minimale d'immunosuppresseurs permettant de prévenir cette complication pour un patient donné n'est pas connue, la pratique actuelle est souvent de sur-immunosupprimer les patients aux dépens du risque infectieux et néoplasique (21).

2 - Le polyomavirus BK

2.1 *BK polyomavirus and the transplanted kidney; immunopathology and therapeutic approaches*

Le polyomavirus BK est un virus acquis durant l'enfance demeurant latent dans l'uroépithélium. Un système immunitaire compétent permet de contrôler sa réactivation. Par contre, chez les greffés rénaux, ce virus peut se réactiver et entraîner une néphropathie affectant jusqu'à 10% d'entre eux (22). Un ensemble de facteurs agissent simultanément dans cette population afin de créer les conditions parfaites à sa réactivation. Tout d'abord, nous croyons que l'infection chez les greffés provient des donneurs. Il s'agit donc d'une souche qui peut être différente de celle contre laquelle le receveur a développé une immunité. Ensuite, nous savons maintenant que l'environnement inflammatoire présent tôt après la greffe peut favoriser la transcription virale. De plus, les lésions d'ischémie-reperfusion peuvent libérer le virus. Finalement, les immunosuppresseurs utilisés après la transplantation ciblent préférentiellement les lymphocytes T, qui s'avèrent primordiaux pour le contrôle de la réactivation virale. Lorsque le virus se réactive, on le retrouve dans l'urine puis dans le sang de façon séquentielle avant de causer une néphropathie. À ce jour, le seul traitement démontré efficace est une diminution de l'immunosuppression, ce qui peut cependant augmenter le risque de rejet. Il est donc important de mieux comprendre les interrelations le virus, l'environnement et le système immunitaire afin d'améliorer notre approche face à cette problématique.

Statut: Publié

Journal: Transplantation, 2016 Jul 7, [*Epub ahead of print*]

Contribution des auteurs:

CL: Principale auteure, revue de littérature et écriture du manuscrit

JO et JSD: Aide à la revue de la littérature et l'écriture du manuscrit

SC, LS, MJH, ER, LAT: Révision et édition du manuscrit

BK polyomavirus and the transplanted kidney; immunopathology and therapeutic approaches

Caroline Lamarche, MD^{1,2,7}, Julie Orio, MSc¹, Suzon Collette, MD^{2,7}, Lynne Senécal, MD^{2,7}, Marie-Josée Hébert, MD^{3,4,7}, Édith Renoult, MD^{4,7}, Lee Anne Tibbles, MD^{5,7}, Jean-Sébastien Delisle, MD, PhD^{1,6,7}.

¹ Centre de Recherche de l'Hôpital Maisonneuve-Rosemont (CRHMR), Montreal, Canada

² Division of Nephrology, Department of Medicine, Hôpital Maisonneuve-Rosemont (HMR), Montreal, Canada

³ Centre de recherche du Centre Hospitalier de l'Université de Montréal (CRCHUM), Montreal, Canada

⁴ Division of nephrology, Centre Hospitalier de l'Université de Montréal (CHUM), Montreal, Canada

⁵ Faculty of Medicine, Institute of Infection, Immunity and Inflammation, University of Calgary, Calgary, AB, Canada

⁶ Division of Hematology, Department of Medicine, Hôpital Maisonneuve-Rosemont (HMR), Montreal, Canada

⁷ Members, Canadian National Transplant Research Program (CNTRP)

Disclosures: The authors declare no conflicts of interest.

Funding: This work is partly supported by the CNTRP.

Abbreviations:

DC, dendritic cells

ELISpot, Enzyme-linked immunospot assay

ERE, estrogen response element

GRE/PRE, glucocorticoid and/or progesterone response element

HLA, human leucocyte antigen

HSCT, hematopoietic stem cell transplantation

IFN- γ , interferon- γ

IVIG, intravenous immunoglobulin

KDIGO, Kidney Disease | Improving Global Outcomes

KIR, killer cell immunoglobulin-like receptors

LT, large tumor

mRNA, messenger RNA

NCCR, non-coding control region

NK, natural killer

PCR, polymerase chain reaction

PVAN, polyomavirus-associated nephropathy

SV40, simian virus 40

TGF, transforming growth factor

TNF- α , tumor necrosis factor- α

VP, virus-encoded protein

Abstract

BK polyomavirus is ubiquitous, with a seropositivity rate of over 75% in the adult population. Primary infection is thought to occur in the respiratory tract, but asymptomatic BK virus latency is established in the urothelium. In immunocompromised host, the virus can reactivate but rarely compromises kidney function except in renal grafts, where it causes a tubulo-interstitial inflammatory response similar to acute rejection. Restoring host immunity against the virus is the cornerstone of treatment. This review covers the virus-intrinsic features, the post-transplant micro-environment as well as the host immune factors that underlie the pathophysiology of PVAN. Current and promising therapeutic approaches to treat or prevent this complication are discussed in relation to the complex immunopathology of this condition.

Introduction

Polyomaviruses were first discovered by Ludwig Gross in 1953 as murine leukemia viruses. Notably, newborn mice injected with cell-free extracts of murine leukemia tissues developed adenocarcinomas of the parotid gland in addition to leukemia, suggesting that an infectious agent was the cause of the malignancies¹. The infectious agent was named using the Greek words for many (poly) and cancer (oma)². So far, about 30 species of polyoma viruses have been identified in birds and mammals, including thirteen in humans: BK, JC, KI, WU, Merkel cell polyomavirus, H6, H7, H9, H10, H12, STL, trichodysplasia spinulosa-associated polyomavirus and NJ³. BK polyomavirus was first isolated by Gardner and al. in 1971 from the urine of a renal allograft recipient and was named after the patient's name⁴. Whether BK virus is oncogenic is controversial, but a role in the development of urothelial cancers has been proposed in immunocompromised patients⁵. In immunocompetent patients, the presence of BK virus DNA was found in numerous cases of bladder, urothelial and other tumors^{6,7}. However, given the high prevalence of BK virus infection and latency in those tissues, the detection of BK in tumors does not imply a causal relationship⁸.

It is estimated that at least 75% of the adult population is latently infected with BK virus⁹. Immunocompetent subjects are usually asymptomatic, but immunocompromised hosts can suffer BK-related complications. In kidney transplant recipients, BK and possibly other polyoma viruses can cause nephropathy and ureteral stenosis¹⁰, while hemorrhagic cystitis is prevalent in hematopoietic stem cell transplantation (HSCT) patients¹¹. Rare cases of BK disseminated disease

(tubulointerstitial nephritis, desquamative pneumonitis, meningoencephalitis and retinitis) have also been described¹², especially in patients with acquired immune deficiency syndrome¹³.

Such wide range of presentations associated with BK virus suggests that condition-specific interactions between host and virus factors ultimately dictate the clinical complications related to BK-virus reactivations. As an illustration, polyomavirus-associated nephropathy (PVAN) in kidney transplantation patients and hemorrhagic cystitis occurring after HSCT are both associated with risk factors that are specific for these conditions. In HSCT, risk factors notably include myeloablative conditioning¹⁴, CMV viremia¹⁴, recipients of cord blood units¹⁵ and acute graft-versus-host disease¹⁵, which may relate to two main factors; urothelial damage (myeloablative conditioning) and profound immunosuppression. Immunosuppression following kidney transplantation is likewise necessary for the development of PVAN as well as specific features uniquely associated with renal transplants. As opposed to HSCT where BK reactivation occurs in host tissues, in kidney transplantation the virus reactivates in the graft and the infection is mostly donor-derived¹⁶. Bohl and colleagues have shown a concordance in BK virus infection in receiving pairs from the same donor, with a match in sequences of segments of the two genes (non-coding control region (NCCR) and virus-encoded protein (VP1)) in these patients compared to recipients from different donors¹⁷, strongly supporting a donor origin of the virus in this case. Moreover, there is also a higher rate of reactivation in recipients from BK virus seropositive donors¹⁶.

This review focuses on the virology and BK-specific immunity in the context of renal transplantation, highlighting the interplay between three major variables; the virus, the kidney graft environment and the immune system. The rationale and merit of actual as well as plausible future prevention and treatment approaches for PVAN occurring following BK-virus reactivation are discussed in relation to BK-associated immunopathology.

1. Epidemiology and diagnosis of PVAN

Reactivation of BK virus in the transplant kidney can lead to PVAN in up to 10% of kidney transplant recipients¹⁸. BK virus reactivation is first observed with the appearance of decoy cells or BK virus DNA in the urine preceding viremia by a median of 4 weeks¹⁸. Decoy cells are virally infected uroepithelial cells that can be observed with standard light microscopy. They can be used as a screening method for PVAN, but their positive predictive value is weak (11,7%)¹⁹. These early findings are followed by BK viremia, which precedes nephropathy by a median of 8 weeks. As such, viremia has a better positive predictive value for nephropathy than viruria, especially if viral load is more than 10000 copies/mL^{20,21}, with the caveat that BK virus polymerase chain reaction (PCR) assays are not standardized across centers²². Fifty percent of all detectable viremia occurs in the first 2 months and 95% in the first two years after transplant¹⁸. This timing for reactivation may be related to several factors including intense immunosuppression, tubular injury and ensuing inflammation that characterize the early post-transplantation period.

The intensity of immunosuppressive regimens is a risk factor for the development of PVAN²³. The occurrence of PVAN correlates with the use and dosage of tacrolimus^{23,24} and/or mycophenolate mofetil^{23,25}, anti-thymocyte globulin induction²⁵ and anti-rejection treatment²⁰. Other risks factors are less consistently reported in the literature, but include various recipient-related factors (older age, male sex²⁶), donor factors (degree of human leucocyte antigen - HLA mismatches and BK virus seropositive status²⁷), and factors associated with renal injury (cold ischemia time, delayed graft function and ureteral stent placement)²⁷. The diagnosis of PVAN is highly suggested by the detection of viral inclusion bodies on kidney biopsy but is confirmed with immunohistochemical staining for simian virus 40 (SV40) large T antigen and/or in-situ hybridization for BK virus genetic sequences²⁸. According to the Banff classification, the histopathological findings further categorize PVAN into three stages. Grade A refers to inflammatory changes without acute tubular necrosis, while grade B is defined by tubular epithelial cell lysis and acute tubular necrosis. Finally, the presence of interstitial fibrosis characterize grade C PVAN^{29,30}. Graft prognosis correlates with PVAN severity as 2-year graft survival is 90% for grade A, but only 70% and 50% for grade B and C respectively³¹. Several biomarkers have been developed to assess intrarenal viral disease. The urinary polyomavirus-haufen test which relies on the detection of urinary casts composed of uromodulin, lysed tubular cell and virions is reported to predict PVAN onset, intrarenal viral activity and resolution³¹. Urinary VP1 mRNA is also proposed as a new biomarker to identify PVAN³² which may be used with granzyme B mRNA, proteinase inhibitor-9 mRNA and plasminogen activator inhibitor-1 mRNA to predict graft failure risk^{33,34}. Although

promising, these tests require further validation before widespread clinical use³¹. Furthermore, granzyme B and proteinase inhibitor-9 mRNAs are not specific for PVAN and they were used as biomarkers in the CTOT-O4 study to predict acute cellular rejection³⁵. Interestingly, the diagnostic signature elaborated in this study was also associated with BK virus infection³⁵ indicating that non-specific surrogate markers of immune activation can only be used in conjunction with other diagnostic information.

2. Virology and pathogenesis of BK

BK polyomavirus genome shares about 72% nucleotide homology with JC virus and 70% with SV40. It consists of a single molecule of circular viral DNA of 5300 base-pairs, complexed with cellular histones (H2A, H2B, H3, H4) and surrounded by an icosahedral capsid containing three virus-encoded proteins, VP1, VP2 and VP3³⁶. BK virus genome contains three functional regions; NCCR which regulates viral replication and transcription, the early and the late regions³⁷. The early region contains large tumor (LT) and small tumor antigen proteins, which are derived by alternative splicing of a common precursor³⁶ and are believed to be the first proteins expressed. The late region contains genetic information for the three virus-encoded proteins (VP) and agnoproteins³⁷.

Role of the viral proteins

BK polyomavirus binds to the target cells through interaction with two ganglioside receptors, GT1b and GD1b and then uses caveolae-mediated endocytosis to reach the endoplasmic reticulum³⁸ (Figure 1). Following partial uncoating of the virus by

reduction and isomerization of the disulfide bonds that link VP1 proteins, BK virus retrotranslocates to the cytosol for a second rearrangement of the capsid, thereby enabling a liaison to the nuclear pore and passage of viral DNA into the cell nucleus³⁹, possibly facilitated by nuclear localization signals on the minor capsid proteins, VP2 and VP3⁴⁰. Following infection of human kidney epithelial cells *in vitro*, LT expression is observed at 36 hours before VP1 expression and viral DNA replication⁴¹ and is required for viral DNA replication and expression of the late genes⁴². It can also induce an oncogenic effect by specifically binding and inactivating tumour suppressor proteins, including retinoblastoma family genes and p53 (Figure 1). Thus, it can promote the transition of the cell into the S phase⁴³. In an elegant study, Seemayer and colleagues demonstrated with indirect immunofluorescence that the enlargement of nucleus seen in polyomavirus-infected tubular cells is associated with viral replication, large T antigen expression and p53 accumulation. This observation correlates with an activation of the cycle cell, as seen by the expression of Ki-67. Viral replication can also lead to cellular demise. The absence of caspase 3, bcl-2 as well as a regular distribution of nuclear DNA indicates that cells die mostly by necrosis and not apoptosis⁴⁴, in accordance with the previous observation made in PVAN patients by light and electronic microscopy⁴⁵.

Viral strains

We can classify BK virus as “archetype” or “rearranged” types, based on the genotype of the NCCR. The NCCR regulates viral replication and transcription⁴⁶. The rearranged variant implies numerous mutations in the NCCR region which can

amplify the replication potential⁴⁷, a phenomenon that has been validated *in vivo*⁴⁸. In their meta-analysis, Sharma and colleagues concluded that there is a correlation between the rearranged variant and the development of nephritis⁴⁹. Two hypotheses have been suggested to explain this relationship; 1) the rearranged variant is more virulent and leads easily to nephritis, or 2) nephritis is associated with a more rapid viral turnover which favors the development of mutations⁴⁹. Chatterjee and al found both virus types can be found in peripheral blood cells of healthy individuals. Hence, they proposed that leukocytes may play a role in the NCCR rearrangement process and transport of BK virus^{46, 50}.

Transmission,

The exact route of transmission from human to human is unknown⁵¹. Oral transmission has been proposed⁵², but the most accepted hypothesis is that BK is spread through the respiratory tract⁵³. Primary infection is indeed associated with upper respiratory symptoms in one third of children⁵⁴. Moreover, Goudsmith *et al.* have demonstrated that BK seroconversion is present in 8% of children admitted to the hospital for any upper respiratory tract illness, compared with 15% for adenovirus, influenza A, parainfluenza, respiratory syncytial virus and mycoplasma pneumoniae combined⁵³ further strengthening the hypothesis that primary BK infection occurs through the respiratory tract.

Latency

After primary infection, BK virus persists mostly in the renal tubular epithelial cells and the uroepithelium, in a latent form. BK virus DNA was found in 33% of kidneys by

DNA-DNA hybridization in normal subjects⁵⁵ and in 25% of fresh frozen prostate specimens of patients with prostate adenocarcinoma, using nested PCR⁵⁶. It was also found in 2/67 autopsy brain specimens with southern blot⁵⁷ and in 17/18 healthy donors peripheral blood leucocytes by PCR amplification with in situ hybridization⁵⁸. Interestingly, Dolei and colleagues detected BK virus NCCR DNA by nested PCR in 22% of healthy donors, but the presence of VP1 DNA in only 7% of subjects, a prevalence that was declining with age. NCCR positive prevalence in peripheral blood monocytes cells was 37,5% in the less than 20 years old group, to 12,5% in the 21 to 40 years old and 0% in the more than forty years old⁵⁹. Therefore, they hypothesized that blood cells do not host biologically active BK virus for a long time after acute infection or reactivation⁵⁹.

Reactivation

Seroprevalence in general population is about 50% in children of four years old and more than 75% in adults⁹. Newborns have maternal antibodies that decline with a nadir at 6 months⁹. Viruria, which may represent the first evidence of reactivation, can be detected in both healthy and immunocompromised subjects. Pregnant women can have asymptomatic viruria⁶⁰, a possible consequence of hormones (mostly glucocorticoid and the combination of oestrogen and progesterone) on viral replication⁶¹. Viruria has also been noted in 7% of asymptomatic healthy blood donors⁶² and in more than 60% in immunocompromised patients⁶³. Indeed, in addition to kidney transplant and hematopoietic stem cell transplant recipients, viral reactivation has been described in patients with HIV¹³, lupus erythematosus

patients⁶⁴, Wiskott-Aldrich syndrome⁷, hyperimmunoglobulin M immunodeficiency⁶⁵, cartilage-hair hypoplasia and Hodgkin's disease⁶⁶, in non-renal solid transplant⁶⁷ and in multiple sclerosis patients receiving Natalizumab therapy⁶⁸.

In kidney transplant recipients the virus initially replicates in the distal tubular epithelial cells, leading to necrosis and initiation of local damage and inflammation. The spread of virus in the adjacent environment will result in viruria and the infection of adjacent cells. Following this initial insult, denudation and dissolution of the tubular basement membrane occurs, allowing infection to spread in the intertubular space and by peritubular capillaries resulting in viremia⁴⁵ (Figure 2). This is followed by recruitment of inflammatory cells in the tubulo-interstitial space and viral spreading to proximal cells. Infection control will normally occur with the reestablishment of immune competence. A two-hit phenomenon is usually required for BK virus associated nephropathy development: environmental factors promoting viral replication and immunodeficiency.

3.1 Environmental factors and the inception of PVAN

PVAN occurs early after transplant, likely in the context of a “perfect storm” where immunosuppression is at its peak and active tubular lesions from ischemia-reperfusion or surgical trauma coincide. Indeed, electron microscopic data of kidney biopsies from patients with BK nephropathy demonstrated extensive tubular necrosis, even of the non-infected cells. Therefore, a question is whether tubular injury can

trigger BK-mediated nephritis, or does PVAN requires an environment conducive to tubular injury⁴⁵.

Mouse model of polyomavirus infection demonstrated that kidney damage, either chemical or ischemic, can promote viral replication⁶⁹. Viral replication is controlled by the NCCR and can be regulated by numerous cellular transcription factors, including nuclear factor I, Sp1, NFAT, AP1, Smad3, estrogen response element (ERE), glucocorticoid and/or progesterone response element (GRE/PRE), p53, NF- κ B, C/EBP and maybe PEA3, AP-2, CREB and GM-CSF (as reviewed by Liang and colleagues)⁷⁰. Several of these molecules articulate numerous pro or anti-inflammatory pathways that are active following kidney injury and that could link ischemia/reperfusion, as well as inflammatory responses, to BK virus replication. As examples, factors such as TGF- β and tumor necrosis factor alpha (TNF- α) that can directly enhance transcriptional activity and promote viral replication⁷⁰. Microenvironmental factors can therefore explain the particular vulnerability of the transplanted kidney. In addition, immunosuppression strategies could also directly activate viral replication. Hence, glucocorticoid pulses often used for treatment of acute rejection are well known risk factors for BK virus reactivation²⁰. Independently of their effects on the immune system, steroid hormones can increase virus transcription by their action on GRE/PRE and ERE transcription factors on NCCR⁷¹. Once the virus has started to replicate, it must be held in check by a proficient immune system.

3.2 Immunology of PVAN

3.2.1 Cellular

T cells, especially CD8+, are pivotal to the anti-BK response and surveillance as they can detect and kill infected cells. The presence of BK virus specific T cells in the blood of seropositive healthy patients was demonstrated by T cell production of interferon- γ (IFN- γ), TNF- α , granzyme A and B and CD107 expression following stimulation with BK's VP1 and LT antigens⁷². This was also demonstrated in patients with BK viremia and nephropathy by assessing IFN- γ producing cells by flow cytometry and multiplex analysis of the supernatant of peripheral blood mononuclear cells stimulated with BK VP1 peptide mix⁷³. Cellular immune responses against LT and VP1 antigens are also higher in patients with decreasing or past viremia, compared to those with increasing or persisting viremia⁷⁴, or BK nephropathy⁷⁵, suggesting again that they play a role in the control and resolution of BK virus reactivation. Additional evidence of T cell activation during viremia or PVAN include the expression of messenger RNA (mRNA) associated with a cytotoxic program in T cells⁷⁶.

In a study by Comoli and colleagues, transplant recipients with or without BK viruria had lower BK specific T cells evaluated by enzyme-linked immunospot assay (ELISpot) compared to healthy patients, which may suggest an impact of immunosuppression on BK immunosurveillance⁷⁷. However, Chakera *et al.* failed to demonstrate a correlation between BK-specific T cells against any of BK peptides by ELISpot assays and tacrolimus trough levels or the total burden of immunosuppression, suggesting other factors must contribute to the lack of specific immunity post transplant⁷⁸. In the study by Comoli *et al.*, viremic patients had

undetectable CD4 and CD8 for BK virus. Appearance of BK reactive T cells coincided with graft function improvement and resolution of viremia⁷⁷ results that had been confirmed by at least two other groups^{78,79}. Compared to viremic patients without BK nephropathy, patients recovering from an episode of viremia had improved T cell response, as evaluated by ELISpot⁷⁹. With the inherent limitations associated with testing peripheral blood and not lymphoid organs or the kidney, these data nonetheless suggest that the restoration of immune competence is central to viral control.

Mueller and colleagues have found that the five BK virus specific proteins (VP1, VP2, VP3, LT, sT) were able to elicit memory T cell response, demonstrated by specific production of IFN- γ , IL2 and TNF- α by flow cytometry analysis. All patients with a history of PVAN had a response to at least VP3 and 74% had a response to all five⁸⁰. Also, these patients had a greater CD4 response than patients with asymptomatic viremia, as seen by a greater production of IL-2 and INF- γ ⁸⁰. However, T cells producing three cytokines (IFN- γ , IL2 and TNF- α), were more frequent in patients with asymptomatic viremia or no BK virus reactivation compared to PVAN patients, suggesting a possible protective role, or that strong T cell activation in PVAN leads to exhaustion and loss of polyfunctional responses⁸⁰. In a study by Schmidt *et al.*, transplant recipients with BK virus complications had more BK-specific T cells but less polyfunctional compared to transplant recipients without BK complications, suggesting also exhaustion of those T cells⁸¹.

T cells recognize peptide antigens presented by HLA molecules. HLA matching could therefore be important to elicit an optimal response. Whether HLA mismatching has an impact on PVAN is controversial. While some studies found an association between BK virus nephropathy and HLA mismatch⁸², others did not⁸³. With the significant caveat that patients with many HLA mismatches are more aggressively immunosuppressed, thereby impeding anti-viral T cell responses, HLA mismatching could further limit viral antigen recognition on mismatched HLA molecules. Matching of HLA-A2, B44 and DR15 may be protective against BK viremia⁸⁴, and the absence of C7 in either the donor or the recipient may be a risk factor for BK infection¹⁷, a result that was not confirmed in another cohort⁸⁵.

Little is known about the resolution process of PVAN. There is an inflammatory response resembling histologically and genetically to acute rejection^{76,86}. Whether this response is appropriate or is overwhelming, as an immune reconstitution syndrome, is not known. Two questions remain; does this process trigger fibrosis⁸⁷ and/or allospecific damage? In the study by Menter and colleagues, PVAN resolution was not associated with fibrosis, but all biopsies were obtained relatively early after PVAN resolution (within one year)⁸⁶. Despite the risk of alloreactive damage, the central tenet of PVAN prevention and treatment is a reduction in iatrogenic T cell immunosuppression.

3.2.2 Humoral

Many studies used serological testing as a surrogate marker for B cells activity in BK virus infection. However, two critical elements must be considered; i: no current serological assay is standardized⁸⁸ and ii; seropositivity indicates that a patient has been in contact with the virus and seroconverted, but this does not imply the development of effective anti-BK T cell memory responses which are principally needed to control BK reactivation⁷⁷.

Qualitative and quantitative serostatus

Pediatric studies demonstrated a correlation between seronegative status and an increase risk of viruria⁸⁹ and PVAN⁹⁰. However, this correlation is controversial in adults. Two hypotheses have been proposed to explain the difference between these two patient populations. First, seropositivity may decline with time⁹¹. Shah and colleagues reported 100% seropositivity at 10-11 years old and 67% after 35 years old⁹². Hence, antibodies may be present, but under the threshold of detection. Second, adults have been exposed to many different viruses and may have acquired a cross-reactive protection⁸⁹. Bohl demonstrated that a seropositive status in adults pre-transplant does not prevent viremia⁹³ and Hirsch showed that seronegativity in patients before transplantation is not a risk factor for PVAN²⁰. However, another group found a higher risk for BK viremia in seronegative recipients who received a kidney from a seropositive donor⁹⁴. These discrepancies may be accounted by variability in the assays used to detect BK-specific antibodies and quantitative differences in anti-BK antibody titers. It was previously shown that viremic patients had a lower antibody level pre-transplant than those who never developed BK viremia⁹³. Moreover, kidney

recipients from a seropositive donor will have a larger increase in antibody titers than those receiving a graft from a seronegative donor¹⁶, regardless of their own status. This suggests that BK virus transferred through the transplanted kidney can elicit a host primary or recall humoral response. Finally, there is an increase in IgG titer with PVAN resolution, suggesting humoral immunity could play a role in viral control⁹⁵.

3.2.3 Innate immune response

Natural killers

Natural killers (NK) cells play an important role in the innate immune response against viral infections, and probably in polyoma infection/reactivation as well⁷⁶. NK cell activity is controlled by opposing signals that come from a balance between activating and inhibitory receptors and can contribute to the orchestration of the adaptive immune response as well as mediating direct killing of infected cells. Many strategies are developed by viruses to avoid recognition by NK cells⁹⁶. For example, BK virus miRNA can mediate down regulation of the NKG2D ligand ULBP3⁹⁷. Trydzenskaya and colleagues found a relation between activating killer cell immunoglobulin-like receptors (KIR) genotype and the control of BK virus infection as well as nephropathy in kidney transplant recipients⁹⁸. NK from PVAN patients had lower activating receptors compared to the control group. However, they did not find any correlations between KIR, HLA compatibilities and BK virus infection⁹⁸. Although less studied than in T cells, the impact of immunosuppressive therapy on NK function reveals that NK cells are inhibited by currently used medications. Cyclosporin A affects NK-cell function, phenotype⁹⁹ and proliferation¹⁰⁰, while prednisolone inhibits

their proliferation when exposed to allogenic tubular epithelial cells and tacrolimus may counter their capacity to degranulate in the same context¹⁰¹. Also, mycophenolate mofetil possibly inhibits proliferation induced by IL-2¹⁰⁰. However, the relative importance of NK cells relative to other immune effectors remains to be defined and whether NK cells could be mobilized for prevention or therapy of BK-related diseases is unclear.

Dendritic cells

Dendritic cells (DC) are central to the adaptive cell response, as they are efficacious antigen-presenting cells. Kidney transplantation and chronic immunosuppression lead to an absolute decrease in DC counts in the peripheral blood^{102,103}. Transplant surgery in itself induces a strong decline in the number of DC (and possibly with a greater reduction for plasmacytoid DC¹⁰³), in kidney transplant recipients as well as in kidney donors. This decline can last up to 3 months after surgery¹⁰². As opposed to donors, patients on chronic immunosuppression fail to recover normal counts¹⁰². Hackstein and colleagues demonstrated that all DC subtypes were lower in patients treated with long term immunosuppression (more than a year) in kidney transplant recipients compared to age and sex matched controls, independently of total leucocyte count¹⁰⁴. Despite this possible DC deficiency, Yapici and colleagues found significant amount of myeloid DC in PVAN biopsies and those cells were found closely to BK virus infected tubules¹⁰⁵, suggesting a role in PVAN pathophysiology.

Pre-transplant DC deficiency, both absolute and functional, is associated with an increased BK viremia risk after transplant, even after adjustment for ureteral stent, tacrolimus and cyclosporine use¹⁰⁶. Functional DC deficiency was evaluated by the production of IL-12 of a pool of peripheral blood mononuclear cells after lipopolysaccharide (LPS) stimulation. Furthermore, the absolute DC number in PVAN patients is reduced compared to other kidney recipients, despite the presence of ureteral stent and the use (not trough level) of tacrolimus¹⁰³. Whether these findings reflect a direct impact of DC deficiency on BK reactivation is unclear. Nonetheless, DC levels and function could be further studied as biomarkers for the prediction of BK reactivation and disease.

Monocytes/macrophages

Little is known about monocytes' role in BK nephropathy. Patients with BK viruria (not PVAN) have increased soluble interleukin-1 receptor antagonist levels in their urine, a counter regulator of monocyte activation which can be produced by monocytes (as well as other cell types, as endothelial and epithelial cells upon inflammatory stress)¹⁰⁷. More research is needed to decipher the role of inflammatory macrophages (M1) and anti-inflammatory (M2) macrophages in PVAN, as they could respectively propagate the initial immune response and orchestrate the resolution of inflammation as well as the development of fibrosis.

4. Current Therapeutic approaches

A first strategy to prevent BK reactivation would be to tailor immunosuppressive regimen according to BK virus reactivation risk. Although promising, there is currently not enough evidence to recommend such approach currently^{108,109}. Hence, a pre-emptive strategy is used. To date, the best preventive PVAN strategy is to routinely monitor BK virus reactivation and to reduce immunosuppression pre-emptively if needed. According to the KDIGO (Kidney Disease | Improving Global Outcomes) recommendations, BK screening should be performed monthly early after transplant (first 3-6 months), then every 3 months until the end of the first year post-transplant¹¹⁰. Testing should be repeated and performed at increased frequency if there is an unexplained rise in serum creatinine and after treatment for acute rejection. PCR quantification of BK viremia is recommended as the screening method as it has the best sensibility and specificity¹⁹. If not accessible, urinary cells or urinary PCR are acceptable surrogate markers of BK reactivation^{19,111}. Kidney biopsy of patients with viral load of 10000 copies/mL should be performed as it is highly associated with PVAN^{20,21}. Absence of histological changes associated with PVAN, associated with viremia over 10000 copies/mL may be called "presumptive PVAN". The conventional approach is to treat those patients as definitive PVAN. However, to minimize the risk of acute rejection associated with a reduction in immunosuppression in patients who might not develop definitive PVAN, Nিকেleit and Singh recently proposed to better stratify these patients using the urinary polyomavirus-haufen test and urinary mRNA in order to personalize therapeutic interventions and avoid under

treating BK reactivation in the kidney ³¹. These complementary analyses are not available to all centres and have not made their way into the KDIGO recommendations.

When there is viral reactivation, the only recommended treatment is a reduction in immunosuppression (KDIGO), but it comes with the risk of acute rejection¹¹². These approaches include to first reduce the calcineurin inhibitor ^{83,113,114,115}, or reduce/discontinue the anti-metabolite^{116,117}, to reduce them both simultaneously^{118,119,120} or to switch to less potent drugs, such as cyclosporin A (if tacrolimus is used as first line) ^{83,113,121,122}, azathioprine, sirolimus¹²³ or leflunomide. However, these protocols have never been compared head to head, thereby leaving clinicians rely on their experience and the clinical context. There are only four randomized-controlled trials on PVAN prevention or treatment (Table 1). Despite the lack of clinical evidence supporting a particular approach, many treatments are proposed for PVAN notably based on the demonstration of anti-viral activity *in vitro*. At our center, we first revised downwards the calcineurin inhibitor target and halved the anti-metabolite. If possible, we randomized PVAN patients in clinical trials.

Sirolimus

The Mammalian Target of Rapamycin (mTOR) complex-1 inhibitor Sirolimus is used as an immunosuppressive drug owing mostly to its capacity to inhibit IL-2 dependent T cell proliferation. It also has an impact on effector T cell metabolic programming and TReg generation and maintenance¹²⁴. In addition, Sirolimus was shown *in vitro* to

reduce LT antigen replication but not BK virus DNA replication¹²⁵. This could also occur *in vivo* and provide direct anti-viral effects¹²⁶. However, Sirolimus is likely less potent as an immunosuppressive agent than calcineurin inhibitors^{127,128}. Hence, it might be difficult to dissect the relative contribution of immunomodulation and anti-viral effects in human studies.

Leflunomide and cidofovir

Leflunomide has been increasingly used in PVAN patients. In its' active form, A771726, Leflunomide inhibits protein kinase activity and the synthesis of pyrimidines¹²⁹. *In vitro*, it reduces LT antigen expression and BK DNA replication¹³⁰. Cidofovir is a cytosine nucleoside analog which inhibits viral DNA polymerase in cytomegalovirus infections, but its antiviral effect in BK nephropathy is not known¹³¹. Although proposed as a potential therapeutic agent in PVAN, concerns remain related to Cidofovir's nephrotoxicity in patients with precarious renal function. Also, a pharmacology study concluded that Leflunomide and Cidofovir activity against BK virus is modest and that the selectivity index is low¹³². Finally, a systematic review on the treatment of PVAN concluded that there is no benefits of adding Cidofovir or Leflunomide to reduction of immunosuppression¹¹². However, and as pointed by the authors, this conclusion is made from small cohorts and has not been addressed in a large randomized study.

Quinolone

Fluoroquinolones could also have an *in vitro* activity against polyomaviruses¹³³. They inhibit the helicase activity of SV40 LT antigen¹³⁴, as well as DNA topoisomerase¹³⁵. However, one month of levofloxacin wasn't superior to standard treatment in the treatment of BK viremia¹³⁶, and a 3-months course after transplant failed to prevent viruria and was associated with bacterial resistance in a randomized-control trial¹³⁷.

Immunoglobulin

Intravenous immunoglobulin (IVIG) were also proposed to treat BK nephropathy. As for other viral infections, the main effect of such treatment would be from neutralizing antibodies preventing cellular infection¹³⁸. There is evidence supporting that this treatment might be useful in some refractory cases¹³⁹. *In vitro*, co-incubation of BK virus with IVIG for 2 hours before WI-38 cells infection led to more than 90% diminution of viral DNA after 7 days in culture¹³⁸. However, this effect was significantly diminished if IVIG treatment was given directly to cells before or 2 hours after the infection, suggesting direct neutralization of BK virus by BK-specific antibodies.

Cyclosporine A

The widely used calcineurin inhibitor Cyclosporine A was also shown to inhibit LT antigen and VP1 *in vitro*. However, its inhibitory effect on BK-specific T cells may override its benefits²⁴. A randomized controlled trial comparing Cyclosporine A to Tacrolimus demonstrated a lower incidence of viruria in the Cyclosporine A group, but no decrease in viremia¹¹⁶. Whether these effects can be related to the anti-viral

effects or the relative reduced potency of Cyclosporine A¹⁴⁰ as an immunosuppressive drug is unknown.

In summary, very little evidence would support any strategy over the others. As such, clinical trials are required to define the best pharmacological approach to BK virus reactivation and PVAN. However, based on the available information, current clinical practices and existing recommendations, we can outline an algorithm (Figure 3) to guide clinical practice and summarize the areas of uncertainty.

5. Perspectives

To this day, reduction in immunosuppression remains the cornerstone of PVAN treatment, highlighting the role of the host's immune system in controlling viral reactivation and infection of the transplanted kidney. Unfortunately, reducing immunosuppression puts the patient at risk of rejection. Hence, providing specific anti-viral immunity without risking organ-threatening alloreactivity remains an unachieved goal. To overcome this hurdle, several approaches using immunosuppressive drugs with anti-viral properties are under evaluation, including the use of Everolimus (ClinicalTrials.gov NCT01624948, NCT01289301 and NCT01911546) and the association of Sirolimus and Leflunomide (controlled-trials.com ISRCTN40228609).

As cellular immunity is the key to control BK virus reactivation, measures to augment BK-specific T cell may become a form of next-generation PVAN treatment. There are two ongoing studies evaluating the presence of BK-specific T cells to predict risk of BK reactivation and nephropathy (ClinicalTrials.gov NCT02049827 and NCT01109186). These studies may provide important information about the degree of T cell immunity required to protect against the development of PVAN. Several approaches may be considered to boost BK-specific immunity, among them adoptive immunotherapy which seems particularly promising.

Adoptive T cell immunotherapy refers to the transfer of *ex vivo* manipulated T cells. The use of *ex vivo* "educated" T cells to prevent or treat viral reactivation in multiple

settings has been shown to be safe and efficacious. This approach was developed in the early 1990s to treat hematopoietic stem cell transplant patients suffering from EBV-related complications¹⁴¹. There is now evidence that several infectious agents can be treated with this approach in both HSCT and solid organ transplant patients. Although requiring expert cell-processing capabilities and clinical cell-therapy infrastructure, anti-viral adoptive immunotherapy has been shown to be cost-effective for the treatment of CMV and EBV-related complications^{142,143}. The feasibility of producing autologous BK-specific T cells lines from viremic renal transplant patient was initially demonstrated by Comoli and colleagues¹⁴⁴. Peripheral blood mononuclear cells were stimulated using autologous DC pulsed with BK virus antigen and exogenous IL-12, IL-7 and IL-2. In addition to the production of BK-reactive conventional T cells, the culture generated up to 66% $\gamma\delta$ T cells which were found to be active against BK infected cells *in vitro*. A role for $\gamma\delta$ T cells in the control of BK infection *in vivo* remains to be demonstrated, but innate lymphoid cells are increasingly recognized a key actors in viral infections¹⁴⁵. A second group successfully expanded 15 BK-specific T cell lines, including one from a viremic kidney transplant recipient. However, cell expansion was limited and up to 20% NK cells were present in the final product¹⁴⁶. Finally, the first demonstration that BK-specific T cell lines could be used clinically came from the Baylor College of Medicine group who treated HSCT patients with donor-derived multi-virus specific T cell lines¹⁴⁷. The treatment cleared BK viremia in 5 out 7 patients and was not associated with significant side effects.

Conclusion

The occurrence of BK virus nephropathy almost exclusively in kidney transplant recipients but not in similarly immunosuppressed patients or in other settings of kidney injury indicates that a convergence of factors hinging around local injury and immunosuppression lead to PVAN. Additional factors may be the virulence of the donor-derived virus and HLA-mismatching. Despite these limitations, the central aspect of PVAN prevention and treatment remains a proficient host T cell immunity. In order to better prevent or treat BK-associated nephropathy, several variables will have to be defined, notably the relative contribution of virus-related and inflammation-related damage to renal dysfunction. Intervention trials designed to target the virus and/or fine tune BK-specific immunity will be required to ultimately define the best approaches to protect renal transplant recipients against PVAN.

References

1. Gross L. A filterable agent, recovered from Ak leukemic extracts, causing salivary gland carcinomas in C3H mice. *Proceedings of the Society for Experimental Biology and Medicine*. Society for Experimental Biology and Medicine (New York, N.Y.). Jun 1953;83(2):414-421.
2. Stewart SE, Eddy BE, Gochenour AM, Borgese NG, Grubbs GE. The induction of neoplasms with a substance released from mouse tumors by tissue culture. *Virology*. Apr 1957;3(2):380-400.
3. Gerits N, Moens U. Agnoprotein of mammalian polyomaviruses. *Virology*. Oct 25 2012;432(2):316-326.
4. Gardner SD, Field AM, Coleman DV, Hulme B. New human papovavirus (B.K.) isolated from urine after renal transplantation. *Lancet (London, England)*. Jun 19 1971;1(7712):1253-1257.
5. Roberts IS, Besarani D, Mason P, Turner G, Friend PJ, Newton R. Polyoma virus infection and urothelial carcinoma of the bladder following renal transplantation. *British journal of cancer*. Nov 4 2008;99(9):1383-1386.
6. Geetha D, Tong BC, Racusen L, Markowitz JS, Westra WH. Bladder carcinoma in a transplant recipient: evidence to implicate the BK human polyomavirus as a causal transforming agent. *Transplantation*. Jun 27 2002;73(12):1933-1936.
7. Takemoto KK, Rabson AS, Mullarkey MF, Blaese RM, Garon CF, Nelson D. Isolation of papovavirus from brain tumor and urine of a patient with Wiskott-Aldrich syndrome. *Journal of the National Cancer Institute*. Nov 1974;53(5):1205-1207.

8. Rollison DE, Sexton WJ, Rodriguez AR, Kang LC, Daniel R, Shah KV. Lack of BK virus DNA sequences in most transitional-cell carcinomas of the bladder. *International journal of cancer. Journal internationale du cancer*. Mar 15 2007;120(6):1248-1251.
9. Gardner SD. Prevalence in England of antibody to human polyomavirus (B.k.). *British medical journal*. Jan 13 1973;1(5845):77-78.
10. Coleman DV, Mackenzie EF, Gardner SD, Poulding JM, Amer B, Russell WJ. Human polyomavirus (BK) infection and ureteric stenosis in renal allograft recipients. *Journal of clinical pathology*. Apr 1978;31(4):338-347.
11. Arthur RR, Shah KV, Baust SJ, Santos GW, Saral R. Association of BK viraemia with hemorrhagic cystitis in recipients of bone marrow transplants. *The New England journal of medicine*. Jul 24 1986;315(4):230-234.
12. Stoner GL, Alappan R, Jobes DV, Ryschkewitsch CF, Landry ML. BK virus regulatory region rearrangements in brain and cerebrospinal fluid from a leukemia patient with tubulointerstitial nephritis and meningoencephalitis. *American journal of kidney diseases : the official journal of the National Kidney Foundation*. May 2002;39(5):1102-1112.
13. Vallbracht A, Lohler J, Gossmann J, et al. Disseminated BK type polyomavirus infection in an AIDS patient associated with central nervous system disease. *The American journal of pathology*. Jul 1993;143(1):29-39.
14. Uhm J, Hamad N, Michelis FV, et al. The risk of polyomavirus BK-associated hemorrhagic cystitis after allogeneic hematopoietic SCT is associated with

myeloablative conditioning, CMV viremia and severe acute GVHD. *Bone marrow transplantation*. Aug 11 2014.

15. Gilis L, Morisset S, Billaud G, et al. High burden of BK virus-associated hemorrhagic cystitis in patients undergoing allogeneic hematopoietic stem cell transplantation. *Bone marrow transplantation*. May 2014;49(5):664-670.

16. Andrews CA, Shah KV, Daniel RW, Hirsch MS, Rubin RH. A serological investigation of BK virus and JC virus infections in recipients of renal allografts. *The Journal of infectious diseases*. Jul 1988;158(1):176-181.

17. Bohl DL, Storch GA, Ryschkewitsch C, et al. Donor origin of BK virus in renal transplantation and role of HLA C7 in susceptibility to sustained BK viremia. *American journal of transplantation : official journal of the American Society of Transplantation and the American Society of Transplant Surgeons*. Sep 2005;5(9):2213-2221.

18. Hirsch HH, Brennan DC, Drachenberg CB, et al. Polyomavirus-associated nephropathy in renal transplantation: interdisciplinary analyses and recommendations. *Transplantation*. May 27 2005;79(10):1277-1286.

19. Nankivell BJ, Renthawa J, Jeffreys N, et al. Clinical Utility of Urinary Cytology to Detect BK Viral Nephropathy. *Transplantation*. Aug 2015;99(8):1715-1722.

20. Hirsch HH, Knowles W, Dickenmann M, et al. Prospective study of polyomavirus type BK replication and nephropathy in renal-transplant recipients. *The New England journal of medicine*. Aug 15 2002;347(7):488-496.

21. Randhawa P, Ho A, Shapiro R, et al. Correlates of quantitative measurement of BK polyomavirus (BKV) DNA with clinical course of BKV infection in renal transplant patients. *Journal of clinical microbiology*. Mar 2004;42(3):1176-1180.

22. Solis M, Meddeb M, Sueur C, et al. Sequence variation in amplification target genes and standards influence interlaboratory comparison of BK virus DNA load measurement. *Journal of clinical microbiology*. Oct 14 2015.
23. Borni-Duval C, Caillard S, Olagne J, et al. Risk factors for BK virus infection in the era of therapeutic drug monitoring. *Transplantation*. Jun 27 2013;95(12):1498-1505.
24. Egli A, Kohli S, Dickenmann M, Hirsch HH. Inhibition of polyomavirus BK-specific T cell responses by immunosuppressive drugs. *Transplantation*. Nov 27 2009;88(10):1161-1168.
25. Dharnidharka VR, Cherikh WS, Abbott KC. An OPTN analysis of national registry data on treatment of BK virus allograft nephropathy in the United States. *Transplantation*. Apr 15 2009;87(7):1019-1026.
26. Hirsch HH, Randhawa P. BK polyomavirus in solid organ transplantation. *American journal of transplantation : official journal of the American Society of Transplantation and the American Society of Transplant Surgeons*. Mar 2013;13 Suppl 4:179-188.
27. Hirsch HH, Vincenti F, Friman S, et al. Polyomavirus BK replication in de novo kidney transplant patients receiving tacrolimus or cyclosporine: a prospective, randomized, multicenter study. *American journal of transplantation : official journal of the American Society of Transplantation and the American Society of Transplant Surgeons*. Jan 2013;13(1):136-145.
28. Masutani K, Shapiro R, Basu A, Tan H, Wijkstrom M, Randhawa P. The Banff 2009 Working Proposal for polyomavirus nephropathy: a critical evaluation of its utility

as a determinant of clinical outcome. *American journal of transplantation : official journal of the American Society of Transplantation and the American Society of Transplant Surgeons*. Apr 2012;12(4):907-918.

29. Sar A, Worawichawong S, Benediktsson H, Zhang J, Yilmaz S, Trpkov K. Interobserver agreement for Polyomavirus nephropathy grading in renal allografts using the working proposal from the 10th Banff Conference on Allograft Pathology. *Human pathology*. Dec 2011;42(12):2018-2024.

30. Haas M, Sis B, Racusen LC, et al. Banff 2013 meeting report: inclusion of c4d-negative antibody-mediated rejection and antibody-associated arterial lesions. *American journal of transplantation : official journal of the American Society of Transplantation and the American Society of Transplant Surgeons*. Feb 2014;14(2):272-283.

31. Nicleleit V, Singh HK. Polyomaviruses and disease: is there more to know than viremia and viruria? *Current opinion in organ transplantation*. Jun 2015;20(3):348-358.

32. Ding R, Medeiros M, Dadhania D, et al. Noninvasive diagnosis of BK virus nephritis by measurement of messenger RNA for BK virus VP1 in urine. *Transplantation*. Oct 15 2002;74(7):987-994.

33. Dadhania D, Snopkowski C, Ding R, et al. Validation of noninvasive diagnosis of BK virus nephropathy and identification of prognostic biomarkers. *Transplantation*. Jul 27 2010;90(2):189-197.

34. Dadhania D, Snopkowski C, Muthukumar T, et al. Noninvasive prognostication of polyomavirus BK virus-associated nephropathy. *Transplantation*. Jul 27 2013;96(2):131-138.
35. Suthanthiran M, Schwartz JE, Ding R, et al. Urinary-cell mRNA profile and acute cellular rejection in kidney allografts. *The New England journal of medicine*. Jul 4 2013;369(1):20-31.
36. Imperiale M.J. MEO. Polyomaviruses. In: Wilkins LWa, ed. *Fields Virology*. Philadelphia2007:2263-2298.
37. Moens U, Van Ghelue M, Johannessen M. Oncogenic potentials of the human polyomavirus regulatory proteins. *Cellular and molecular life sciences : CMLS*. Jul 2007;64(13):1656-1678.
38. Neu U, Stehle T, Atwood WJ. The Polyomaviridae: Contributions of virus structure to our understanding of virus receptors and infectious entry. *Virology*. Feb 20 2009;384(2):389-399.
39. Byun H, Gou Y, Zook A, Lozano MM, Dudley JP. ERAD and how viruses exploit it. *Frontiers in microbiology*. 2014;5:330.
40. Bennett SM, Zhao L, Bosard C, Imperiale MJ. Role of a nuclear localization signal on the minor capsid proteins VP2 and VP3 in BKPyV nuclear entry. *Virology*. Jan 1 2015;474:110-116.
41. Low J, Humes HD, Szczyпка M, Imperiale M. BKV and SV40 infection of human kidney tubular epithelial cells in vitro. *Virology*. Jun 1 2004;323(2):182-188.

42. Lin MC, Wang M, Fang CY, Chen PL, Shen CH, Chang D. Inhibition of BK virus replication in human kidney cells by BK virus large tumor antigen-specific shRNA delivered by JC virus-like particles. *Antiviral research*. Mar 2014;103:25-31.
43. Delbue S, Comar M, Ferrante P. Review on the relationship between human polyomaviruses-associated tumors and host immune system. *Clinical & developmental immunology*. 2012;2012:542092.
44. Seemayer CA, Seemayer NH, Durmuller U, et al. BK virus large T and VP-1 expression in infected human renal allografts. *Nephrology, dialysis, transplantation : official publication of the European Dialysis and Transplant Association - European Renal Association*. Dec 2008;23(12):3752-3761.
45. Drachenberg CB, Papadimitriou JC, Wali R, Cubitt CL, Ramos E. BK polyoma virus allograft nephropathy: ultrastructural features from viral cell entry to lysis. *American journal of transplantation : official journal of the American Society of Transplantation and the American Society of Transplant Surgeons*. Nov 2003;3(11):1383-1392.
46. Chatterjee M, Weyandt TB, Frisque RJ. Identification of archetype and rearranged forms of BK virus in leukocytes from healthy individuals. *Journal of medical virology*. Mar 2000;60(3):353-362.
47. Bethge T, Hachemi HA, Manzetti J, Gosert R, Schaffner W, Hirsch HH. Sp1 sites in the noncoding control region of BK polyomavirus are key regulators of bidirectional viral early and late gene expression. *Journal of virology*. Mar 2015;89(6):3396-3411.

48. Gosert R, Rinaldo CH, Funk GA, et al. Polyomavirus BK with rearranged noncoding control region emerge in vivo in renal transplant patients and increase viral replication and cytopathology. *The Journal of experimental medicine*. Apr 14 2008;205(4):841-852.
49. Sharma PM, Gupta G, Vats A, Shapiro R, Randhawa PS. Polyomavirus BK non-coding control region rearrangements in health and disease. *Journal of medical virology*. Aug 2007;79(8):1199-1207.
50. Sundsfjord A, Flaegstad T, Flo R, et al. BK and JC viruses in human immunodeficiency virus type 1-infected persons: prevalence, excretion, viremia, and viral regulatory regions. *The Journal of infectious diseases*. Mar 1994;169(3):485-490.
51. Hirsch HH, Steiger J. Polyomavirus BK. *The Lancet. Infectious diseases*. Oct 2003;3(10):611-623.
52. Sundsfjord A, Spein AR, Lucht E, Flaegstad T, Seternes OM, Traavik T. Detection of BK virus DNA in nasopharyngeal aspirates from children with respiratory infections but not in saliva from immunodeficient and immunocompetent adult patients. *Journal of clinical microbiology*. May 1994;32(5):1390-1394.
53. Goudsmit J, Wertheim-van Dillen P, van Strien A, van der Noordaa J. The role of BK virus in acute respiratory tract disease and the presence of BKV DNA in tonsils. *Journal of medical virology*. 1982;10(2):91-99.
54. Mantyjarvi RA, Meurman OH, Vihma L, Berglund B. A human papovavirus (B.K.), biological properties and seroepidemiology. *Annals of clinical research*. Oct 1973;5(5):283-287.

55. Chesters PM, Heritage J, McCance DJ. Persistence of DNA sequences of BK virus and JC virus in normal human tissues and in diseased tissues. *The Journal of infectious diseases*. Apr 1983;147(4):676-684.
56. Zambrano A, Kalantari M, Simoneau A, Jensen JL, Villarreal LP. Detection of human polyomaviruses and papillomaviruses in prostatic tissue reveals the prostate as a habitat for multiple viral infections. *The Prostate*. Dec 1 2002;53(4):263-276.
57. Elsner C, Dorries K. Evidence of human polyomavirus BK and JC infection in normal brain tissue. *Virology*. Nov 1992;191(1):72-80.
58. Dorries K, Vogel E, Gunther S, Czub S. Infection of human polyomaviruses JC and BK in peripheral blood leukocytes from immunocompetent individuals. *Virology*. Jan 1994;198(1):59-70.
59. Dolei A, Pietropaolo V, Gomes E, et al. Polyomavirus persistence in lymphocytes: prevalence in lymphocytes from blood donors and healthy personnel of a blood transfusion centre. *The Journal of general virology*. Aug 2000;81(Pt 8):1967-1973.
60. Coleman DV, Gardner SD, Mulholland C, et al. Human polyomavirus in pregnancy. A model for the study of defence mechanisms to virus reactivation. *Clinical and experimental immunology*. Aug 1983;53(2):289-296.
61. McCance DJ, Mims CA. Reactivation of polyoma virus in kidneys of persistently infected mice during pregnancy. *Infection and immunity*. Sep 1979;25(3):998-1002.

62. Egli A, Infanti L, Dumoulin A, et al. Prevalence of polyomavirus BK and JC infection and replication in 400 healthy blood donors. *The Journal of infectious diseases*. Mar 15 2009;199(6):837-846.
63. Hirsch HH. BK virus: opportunity makes a pathogen. *Clinical infectious diseases : an official publication of the Infectious Diseases Society of America*. Aug 1 2005;41(3):354-360.
64. Sundsfjord A, Osei A, Rosenqvist H, et al. BK and JC viruses in patients with systemic lupus erythematosus: prevalent and persistent BK viremia, sequence stability of the viral regulatory regions, and nondetectable viremia. *The Journal of infectious diseases*. Jul 1999;180(1):1-9.
65. Rosen S, Harmon W, Krensky AM, et al. Tubulo-interstitial nephritis associated with polyomavirus (BK type) infection. *The New England journal of medicine*. May 19 1983;308(20):1192-1196.
66. de Silva LM, Bale P, de Courcy J, Brown D, Knowles W. Renal failure due to BK virus infection in an immunodeficient child. *Journal of medical virology*. Feb 1995;45(2):192-196.
67. Egli A, Helmersen DS, Taub K, Hirsch HH, Johnson A. Renal failure five years after lung transplantation due to polyomavirus BK-associated nephropathy. *American journal of transplantation : official journal of the American Society of Transplantation and the American Society of Transplant Surgeons*. Oct 2010;10(10):2324-2330.
68. Lonergan RM, Carr MJ, De Gascun CF, et al. Reactivation of BK polyomavirus in patients with multiple sclerosis receiving natalizumab therapy. *Journal of neurovirology*. Sep 2009;15(5-6):351-359.

69. Atencio IA, Shadan FF, Zhou XJ, Vaziri ND, Villarreal LP. Adult mouse kidneys become permissive to acute polyomavirus infection and reactivate persistent infections in response to cellular damage and regeneration. *Journal of virology*. Mar 1993;67(3):1424-1432.
70. Liang B, Tikhanovich I, Nasheuer HP, Folk WR. Stimulation of BK virus DNA replication by NFI family transcription factors. *Journal of virology*. Mar 2012;86(6):3264-3275.
71. Moens U, Subramaniam N, Johansen B, Johansen T, Traavik T. A steroid hormone response unit in the late leader of the noncoding control region of the human polyomavirus BK confers enhanced host cell permissivity. *Journal of virology*. Apr 1994;68(4):2398-2408.
72. Zhou W, Sharma M, Martinez J, et al. Functional characterization of BK virus-specific CD4+ T cells with cytotoxic potential in seropositive adults. *Viral immunology*. Sep 2007;20(3):379-388.
73. Hammer MH, Brestrich G, Andree H, et al. HLA type-independent method to monitor polyoma BK virus-specific CD4 and CD8 T cell immunity. *American journal of transplantation : official journal of the American Society of Transplantation and the American Society of Transplant Surgeons*. Mar 2006;6(3):625-631.
74. Chen Y, Trofe J, Gordon J, et al. Interplay of cellular and humoral immune responses against BK virus in kidney transplant recipients with polyomavirus nephropathy. *Journal of virology*. Apr 2006;80(7):3495-3505.

75. Ahuja M, Cohen EP, Dayer AM, et al. Polyoma virus infection after renal transplantation. Use of immunostaining as a guide to diagnosis. *Transplantation*. Apr 15 2001;71(7):896-899.
76. Lubetzky M, Bao Y, P OB, et al. Genomics of BK viremia in kidney transplant recipients. *Transplantation*. Feb 27 2014;97(4):451-456.
77. Comoli P, Azzi A, Maccario R, et al. Polyomavirus BK-specific immunity after kidney transplantation. *Transplantation*. Oct 27 2004;78(8):1229-1232.
78. Chakera A, Bennett S, Lawrence S, et al. Antigen-specific T cell responses to BK polyomavirus antigens identify functional anti-viral immunity and may help to guide immunosuppression following renal transplantation. *Clin Exp Immunol*. Sep 2011;165(3):401-409.
79. Schachtner T, Muller K, Stein M, et al. BK virus-specific immunity kinetics: a predictor of recovery from polyomavirus BK-associated nephropathy. *American journal of transplantation : official journal of the American Society of Transplantation and the American Society of Transplant Surgeons*. Nov 2011;11(11):2443-2452.
80. Mueller K, Schachtner T, Sattler A, et al. BK-VP3 as a new target of cellular immunity in BK virus infection. *Transplantation*. Jan 15 2011;91(1):100-107.
81. Schmidt T, Adam C, Hirsch HH, et al. BK polyomavirus-specific cellular immune responses are age-dependent and strongly correlate with phases of virus replication. *American journal of transplantation : official journal of the American Society of Transplantation and the American Society of Transplant Surgeons*. Jun 2014;14(6):1334-1345.

82. Awadalla Y, Randhawa P, Ruppert K, Zeevi A, Duquesnoy RJ. HLA mismatching increases the risk of BK virus nephropathy in renal transplant recipients. *American journal of transplantation : official journal of the American Society of Transplantation and the American Society of Transplant Surgeons*. Oct 2004;4(10):1691-1696.
83. Ramos E, Drachenberg CB, Papadimitriou JC, et al. Clinical course of polyoma virus nephropathy in 67 renal transplant patients. *Journal of the American Society of Nephrology : JASN*. Aug 2002;13(8):2145-2151.
84. Masutani K, Ninomiya T, Randhawa P. HLA-A2, HLA-B44 and HLA-DR15 are associated with lower risk of BK viremia. *Nephrology, dialysis, transplantation : official publication of the European Dialysis and Transplant Association - European Renal Association*. Dec 2013;28(12):3119-3126.
85. Awadallah Y, Duquesnoy R, Randhawa P, Shapiro R. HLA susceptibility to BKV infection. *American journal of transplantation : official journal of the American Society of Transplantation and the American Society of Transplant Surgeons*. Mar 2006;6(3):640; author reply 641.
86. Menter T, Mayr M, Schaub S, Mihatsch MJ, Hirsch HH, Hopfer H. Pathology of resolving polyomavirus-associated nephropathy. *American journal of transplantation : official journal of the American Society of Transplantation and the American Society of Transplant Surgeons*. Jun 2013;13(6):1474-1483.
87. Mannon RB, Hoffmann SC, Kampen RL, et al. Molecular evaluation of BK polyomavirus nephropathy. *American journal of transplantation : official journal of the*

American Society of Transplantation and the American Society of Transplant Surgeons. Dec 2005;5(12):2883-2893.

88. Kardas P, Leboeuf C, Hirsch HH. Optimizing JC and BK polyomavirus IgG testing for seroepidemiology and patient counseling. *Journal of clinical virology : the official publication of the Pan American Society for Clinical Virology*. Oct 2015;71:28-33.

89. Ginevri F, De Santis R, Comoli P, et al. Polyomavirus BK infection in pediatric kidney-allograft recipients: a single-center analysis of incidence, risk factors, and novel therapeutic approaches. *Transplantation*. Apr 27 2003;75(8):1266-1270.

90. Smith JM, McDonald RA, Finn LS, Healey PJ, Davis CL, Limaye AP. Polyomavirus nephropathy in pediatric kidney transplant recipients. *American journal of transplantation : official journal of the American Society of Transplantation and the American Society of Transplant Surgeons*. Dec 2004;4(12):2109-2117.

91. Knowles WA, Pipkin P, Andrews N, et al. Population-based study of antibody to the human polyomaviruses BKV and JCV and the simian polyomavirus SV40. *Journal of medical virology*. Sep 2003;71(1):115-123.

92. Shah KV, Daniel RW, Warszawski RM. High prevalence of antibodies to BK virus, an SV40-related papovavirus, in residents of Maryland. *The Journal of infectious diseases*. Dec 1973;128(6):784-787.

93. Bohl DL, Brennan DC, Ryschkewitsch C, Gaudreault-Keener M, Major EO, Storch GA. BK virus antibody titers and intensity of infections after renal transplantation. *Journal of clinical virology : the official publication of the Pan American Society for Clinical Virology*. Oct 2008;43(2):184-189.

94. Sood P, Senanayake S, Sujeet K, et al. Donor and recipient BKV-specific IgG antibody and posttransplantation BKV infection: a prospective single-center study. *Transplantation*. Mar 27 2013;95(6):896-902.
95. Hariharan S, Cohen EP, Vasudev B, et al. BK virus-specific antibodies and BKV DNA in renal transplant recipients with BKV nephritis. *American journal of transplantation : official journal of the American Society of Transplantation and the American Society of Transplant Surgeons*. Nov 2005;5(11):2719-2724.
96. Jonjic S, Babic M, Polic B, Krmpotic A. Immune evasion of natural killer cells by viruses. *Current opinion in immunology*. Feb 2008;20(1):30-38.
97. Bauman Y, Nachmani D, Vitenshtein A, et al. An identical miRNA of the human JC and BK polyoma viruses targets the stress-induced ligand ULBP3 to escape immune elimination. *Cell host & microbe*. Feb 17 2011;9(2):93-102.
98. Trydzenskaya H, Juerchott K, Lachmann N, et al. The genetic predisposition of natural killer cell to BK virus-associated nephropathy in renal transplant patients. *Kidney international*. Aug 2013;84(2):359-365.
99. Wang H, Grzywacz B, Sukovich D, et al. The unexpected effect of cyclosporin A on CD56+CD16- and CD56+CD16+ natural killer cell subpopulations. *Blood*. Sep 1 2007;110(5):1530-1539.
100. Derniame S, Perazzo J, Lee F, et al. Differential effects of mycophenolate mofetil and cyclosporine A on peripheral blood and cord blood natural killer cells activated with interleukin-2. *Cytotherapy*. Oct 2014;16(10):1409-1418.
101. Demmers MW, Korevaar SS, Betjes MG, Weimar W, Rowshani AT, Baan CC. Limited efficacy of immunosuppressive drugs on CD8+ T cell-mediated and natural

killer cell-mediated lysis of human renal tubular epithelial cells. *Transplantation*. Jun 15 2014;97(11):1110-1118.

102. Hesselink DA, Vaessen LM, Hop WC, et al. The effects of renal transplantation on circulating dendritic cells. *Clinical and experimental immunology*. May 2005;140(2):384-393.

103. Womer KL, Peng R, Patton PR, et al. The effects of renal transplantation on peripheral blood dendritic cells. *Clinical transplantation*. Oct 2005;19(5):659-667.

104. Hackstein H, Renner FC, Bohnert A, et al. Dendritic cell deficiency in the blood of kidney transplant patients on long-term immunosuppression: results of a prospective matched-cohort study. *American journal of transplantation : official journal of the American Society of Transplantation and the American Society of Transplant Surgeons*. Dec 2005;5(12):2945-2953.

105. Yapici U, Kers J, Slavujevic-Letic I, et al. Intragraft Blood Dendritic Cell Antigen-1-Positive Myeloid Dendritic Cells Increase during BK Polyomavirus-Associated Nephropathy. *Journal of the American Society of Nephrology : JASN*. Dec 23 2015.

106. Womer KL, Huang Y, Herren H, et al. Dendritic cell deficiency associated with development of BK viremia and nephropathy in renal transplant recipients. *Transplantation*. Jan 15 2010;89(1):115-123.

107. Sadeghi M, Daniel V, Schnitzler P, et al. Urinary proinflammatory cytokine response in renal transplant recipients with polyomavirus BK viruria. *Transplantation*. Nov 15 2009;88(9):1109-1116.

108. Thangaraju S, Gill J, Wright A, Dong J, Rose C, Gill J. Risk Factors for BK Polyoma Virus Treatment and Association of Treatment With Kidney Transplant Failure: Insights From a Paired Kidney Analysis. *Transplantation*. Apr 2016;100(4):854-861.
109. Wojciechowski D, Chandran S. BK Virus Infection After Kidney Transplantation: The Data Are Mounting for a Personalized Approach. *Transplantation*. Apr 2016;100(4):703-704.
110. KDIGO clinical practice guideline for the care of kidney transplant recipients. *American journal of transplantation : official journal of the American Society of Transplantation and the American Society of Transplant Surgeons*. Nov 2009;9 Suppl 3:S1-155.
111. Viscount HB, Eid AJ, Espy MJ, et al. Polyomavirus polymerase chain reaction as a surrogate marker of polyomavirus-associated nephropathy. *Transplantation*. Aug 15 2007;84(3):340-345.
112. Johnston O, Jaswal D, Gill JS, Doucette S, Fergusson DA, Knoll GA. Treatment of polyomavirus infection in kidney transplant recipients: a systematic review. *Transplantation*. May 15 2010;89(9):1057-1070.
113. Randhawa PS, Finkelstein S, Scantlebury V, et al. Human polyoma virus-associated interstitial nephritis in the allograft kidney. *Transplantation*. Jan 15 1999;67(1):103-109.
114. Ginevri F, Azzi A, Hirsch HH, et al. Prospective monitoring of polyomavirus BK replication and impact of pre-emptive intervention in pediatric kidney recipients. *American journal of transplantation : official journal of the American Society of*

Transplantation and the American Society of Transplant Surgeons. Dec 2007;7(12): 2727-2735.

115. Schaub S, Hirsch HH, Dickenmann M, et al. Reducing immunosuppression preserves allograft function in presumptive and definitive polyomavirus-associated nephropathy. *American journal of transplantation : official journal of the American Society of Transplantation and the American Society of Transplant Surgeons*. Dec 2010;10(12):2615-2623.

116. Brennan DC, Agha I, Bohl DL, et al. Incidence of BK with tacrolimus versus cyclosporine and impact of preemptive immunosuppression reduction. *American journal of transplantation : official journal of the American Society of Transplantation and the American Society of Transplant Surgeons*. Mar 2005;5(3):582-594.

117. Hardinger KL, Koch MJ, Bohl DJ, Storch GA, Brennan DC. BK-virus and the impact of pre-emptive immunosuppression reduction: 5-year results. *American journal of transplantation : official journal of the American Society of Transplantation and the American Society of Transplant Surgeons*. Feb 2010;10(2):407-415.

118. Trofe J, Cavallo T, First MR, et al. Polyomavirus in kidney and kidney-pancreas transplantation: a defined protocol for immunosuppression reduction and histologic monitoring. *Transplantation proceedings*. Aug 2002;34(5):1788-1789.

119. Almeras C, Foulongne V, Garrigue V, et al. Does reduction in immunosuppression in viremic patients prevent BK virus nephropathy in de novo renal transplant recipients? A prospective study. *Transplantation*. Apr 27 2008;85(8): 1099-1104.

120. Saad ER, Bresnahan BA, Cohen EP, et al. Successful treatment of BK viremia using reduction in immunosuppression without antiviral therapy. *Transplantation*. Mar 27 2008;85(6):850-854.
121. Mathur VS, Olson JL, Darragh TM, Yen TS. Polyomavirus-induced interstitial nephritis in two renal transplant recipients: case reports and review of the literature. *American journal of kidney diseases : the official journal of the National Kidney Foundation*. May 1997;29(5):754-758.
122. Barri YM, Ahmad I, Ketel BL, et al. Polyoma viral infection in renal transplantation: the role of immunosuppressive therapy. *Clinical transplantation*. Aug 2001;15(4):240-246.
123. Alexiev BA, Randhawa P, Vazquez Martul E, et al. BK virus-associated urinary bladder carcinoma in transplant recipients: report of 2 cases, review of the literature, and proposed pathogenetic model. *Human pathology*. May 2013;44(5):908-917.
124. Lo YC, Lee CF, Powell JD. Insight into the role of mTOR and metabolism in T cells reveals new potential approaches to preventing graft rejection. *Current opinion in organ transplantation*. Aug 2014;19(4):363-371.
125. Liacini A, Seamone ME, Muruve DA, Tibbles LA. Anti-BK virus mechanisms of sirolimus and leflunomide alone and in combination: toward a new therapy for BK virus infection. *Transplantation*. Dec 27 2010;90(12):1450-1457.
126. Wali RK, Drachenberg C, Hirsch HH, et al. BK virus-associated nephropathy in renal allograft recipients: rescue therapy by sirolimus-based immunosuppression. *Transplantation*. Oct 15 2004;78(7):1069-1073.

127. Gallon L, Traitanon O, Sustento-Reodica N, et al. Cellular and molecular immune profiles in renal transplant recipients after conversion from tacrolimus to sirolimus. *Kidney international*. Apr 2015;87(4):828-838.
128. Yang A, Wang B. Sirolimus versus tacrolimus in kidney transplant recipients receiving mycophenolate mofetil and steroids: focus on acute rejection, patient and graft survival. *American journal of therapeutics*. Mar-Apr 2015;22(2):98-104.
129. Elder RT, Xu X, Williams JW, Gong H, Finnegan A, Chong AS. The immunosuppressive metabolite of leflunomide, A77 1726, affects murine T cells through two biochemical mechanisms. *Journal of immunology (Baltimore, Md. : 1950)*. Jul 1 1997;159(1):22-27.
130. Bernhoff E, Tylden GD, Kjerpeseth LJ, Gutteberg TJ, Hirsch HH, Rinaldo CH. Leflunomide inhibition of BK virus replication in renal tubular epithelial cells. *Journal of virology*. Feb 2010;84(4):2150-2156.
131. Gonzalez S, Escobar-Serna DP, Suarez O, Benavides X, Escobar-Serna JF, Lozano E. BK Virus Nephropathy in Kidney Transplantation: An Approach Proposal and Update on Risk Factors, Diagnosis, and Treatment. *Transplantation proceedings*. Jul-Aug 2015;47(6):1777-1785.
132. Farasati NA, Shapiro R, Vats A, Randhawa P. Effect of leflunomide and cidofovir on replication of BK virus in an in vitro culture system. *Transplantation*. Jan 15 2005;79(1):116-118.
133. Sharma BN, Li R, Bernhoff E, Gutteberg TJ, Rinaldo CH. Fluoroquinolones inhibit human polyomavirus BK (BKV) replication in primary human kidney cells. *Antiviral research*. Oct 2011;92(1):115-123.

134. Ali SH, Chandraker A, DeCaprio JA. Inhibition of Simian virus 40 large T antigen helicase activity by fluoroquinolones. *Antiviral therapy*. 2007;12(1):1-6.
135. Anwar S, Brennan DC. Treatment of BK viremia after renal transplantation: are fluoroquinolones a false dawn? *Clinical journal of the American Society of Nephrology : CJASN*. Mar 2014;9(3):445-447.
136. Lee BT, Gabardi S, Grafals M, et al. Efficacy of levofloxacin in the treatment of BK viremia: a multicenter, double-blinded, randomized, placebo-controlled trial. *Clinical journal of the American Society of Nephrology : CJASN*. Mar 2014;9(3):583-589.
137. Knoll GA, Humar A, Fergusson D, et al. Levofloxacin for BK virus prophylaxis following kidney transplantation: a randomized clinical trial. *Jama*. Nov 26 2014;312(20):2106-2114.
138. Randhawa PS, Schonder K, Shapiro R, Farasati N, Huang Y. Polyomavirus BK neutralizing activity in human immunoglobulin preparations. *Transplantation*. Jun 27 2010;89(12):1462-1465.
139. Vu D, Shah T, Ansari J, Naraghi R, Min D. Efficacy of intravenous immunoglobulin in the treatment of persistent BK viremia and BK virus nephropathy in renal transplant recipients. *Transplantation proceedings*. Mar 2015;47(2):394-398.
140. Ekberg H, Tedesco-Silva H, Demirbas A, et al. Reduced exposure to calcineurin inhibitors in renal transplantation. *The New England journal of medicine*. Dec 20 2007;357(25):2562-2575.

141. Mani J, Jin N, Schmitt M. Cellular immunotherapy for patients with reactivation of JC and BK polyomaviruses after transplantation. *Cytotherapy*. Oct 2014;16(10):1325-1335.
142. Bao L, Dunham K, Stamer M, Mulieri KM, Lucas KG. Expansion of cytomegalovirus pp65 and IE-1 specific cytotoxic T lymphocytes for cytomegalovirus-specific immunotherapy following allogeneic stem cell transplantation. *Biology of blood and marrow transplantation : journal of the American Society for Blood and Marrow Transplantation*. Oct 2008;14(10):1156-1162.
143. Heslop HE, Slobod KS, Pule MA, et al. Long-term outcome of EBV-specific T cell infusions to prevent or treat EBV-related lymphoproliferative disease in transplant recipients. *Blood*. Feb 4 2010;115(5):925-935.
144. Comoli P, Basso S, Azzi A, et al. Dendritic cells pulsed with polyomavirus BK antigen induce ex vivo polyoma BK virus-specific cytotoxic T cell lines in seropositive healthy individuals and renal transplant recipients. *Journal of the American Society of Nephrology : JASN*. Dec 2003;14(12):3197-3204.
145. Boeckh M, Murphy WJ, Peggs KS. Recent advances in cytomegalovirus: an update on pharmacologic and cellular therapies. *Biology of blood and marrow transplantation : journal of the American Society for Blood and Marrow Transplantation*. Jan 2015;21(1):24-29.
146. Blyth E, Clancy L, Simms R, et al. BK virus-specific T cells for use in cellular therapy show specificity to multiple antigens and polyfunctional cytokine responses. *Transplantation*. Nov 27 2011;92(10):1077-1084.

147. Papadopoulou A, Gerdemann U, Katari UL, et al. Activity of broad-spectrum T cells as treatment for AdV, EBV, CMV, BKV, and HHV6 infections after HSCT. *Science translational medicine*. Jun 25 2014;6(242):242ra283.

Table 1.

Randomized trials for prevention or treatment of BK virus infection in kidney transplant recipients

Study	Population	Protocol	follow-up	Primary Outcome	Results
Knoll, JAMA, 2014; 312 (20): 2006-14.	154 KTR	3 mo of Levofloxacin (500 mg daily) or placebo	46,5 wk (levofloxacin), 46,3 (placebo)	Occurrence of BK viruria within the first year after transplantation	29% (levofloxacin) vs 33,3% (placebo); Hazard ratio, 0.91; 95% CI, 0.51-1.63; $p=0.58$
Lee, CJASN, 2014; 9(3): 583-389	39 Viremic KTR	1 mo Levofloxacin 500 mg daily or placebo	6 mo	Percentage reduction in plasma BK viral load at 3 months	70,3%(levofloxacin) vs 69,1% (placebo), $p=0,93$
Guasch, Transplantation 2010; 90(8): 891-897	46 Newly diagnosed or untreated PVAN	FK778 or reduction of immunosuppression	6 mo	Change in urine BK viral load	-3,1 (FK778) vs -2,8 (control) $p=0,586$
Brennan, Am J T; 2005; 5(3): 582-594	200 KTR	FK506 or CyA	1 y	Incidence of BK virus infection with tacrolimus versus cyclosporine	Viruria: 46% (FK506) vs 13% (CyA), $p=0,005$. Viremia 12% (FK506) vs 11% (CyA) $p=1$

Study

KTR, Kidney transplant recipients; PVAN, polyomavirus associated nephropathy; CyA, cyclosporin A

Figures

Figure 1. BK polyoma virus cell entry and infection. Representation of mechanisms of viral cell entry, trafficking and infection highlighting action on the cell cycle machinery.

Figure 2. Physiopathology of PVAN. Depiction of PVAN development from latency in the uroepithelium (top) to the development of renal inflammation and fibrosis (bottom).

Figure 3. Algorithm to guide the screening, prevention and treatment of polyomavirus BK nephropathy after kidney transplant.

Figure 1

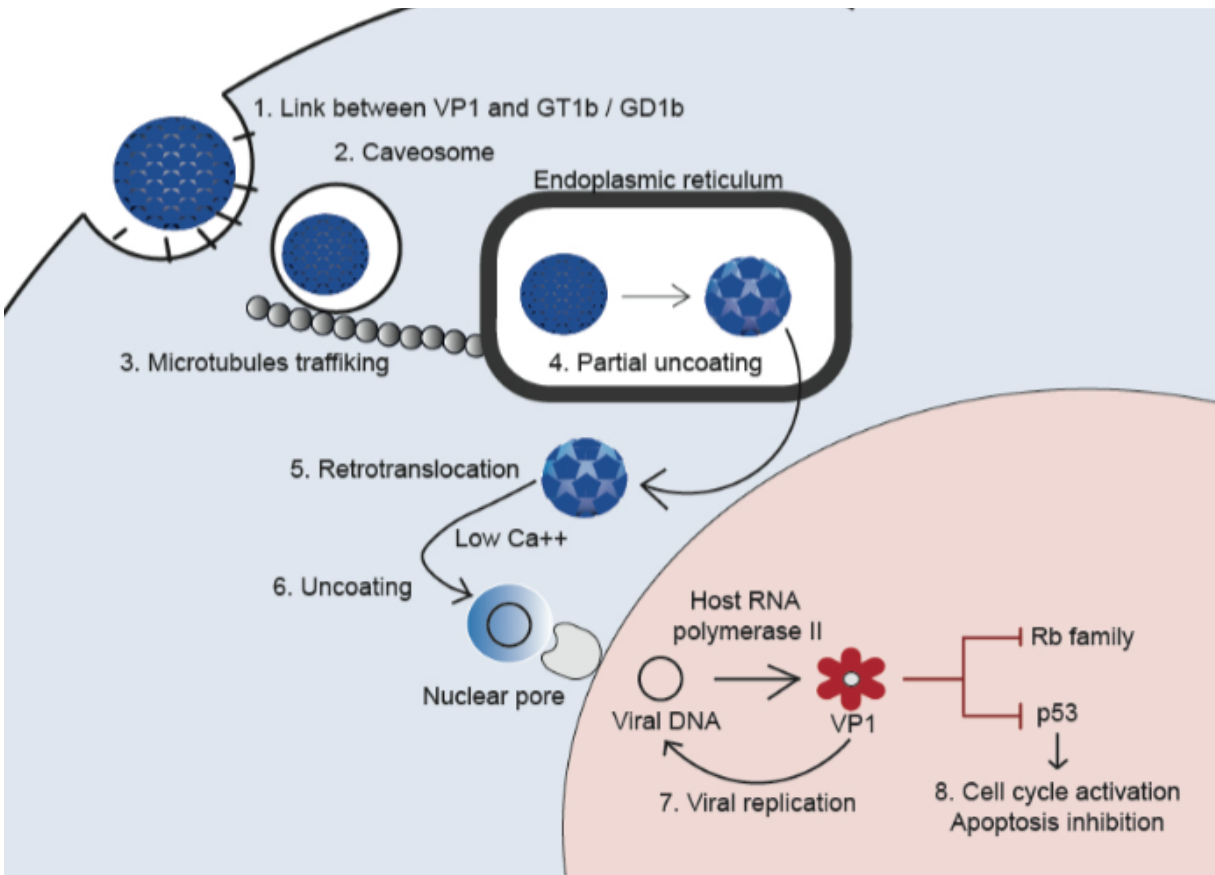


Figure 2

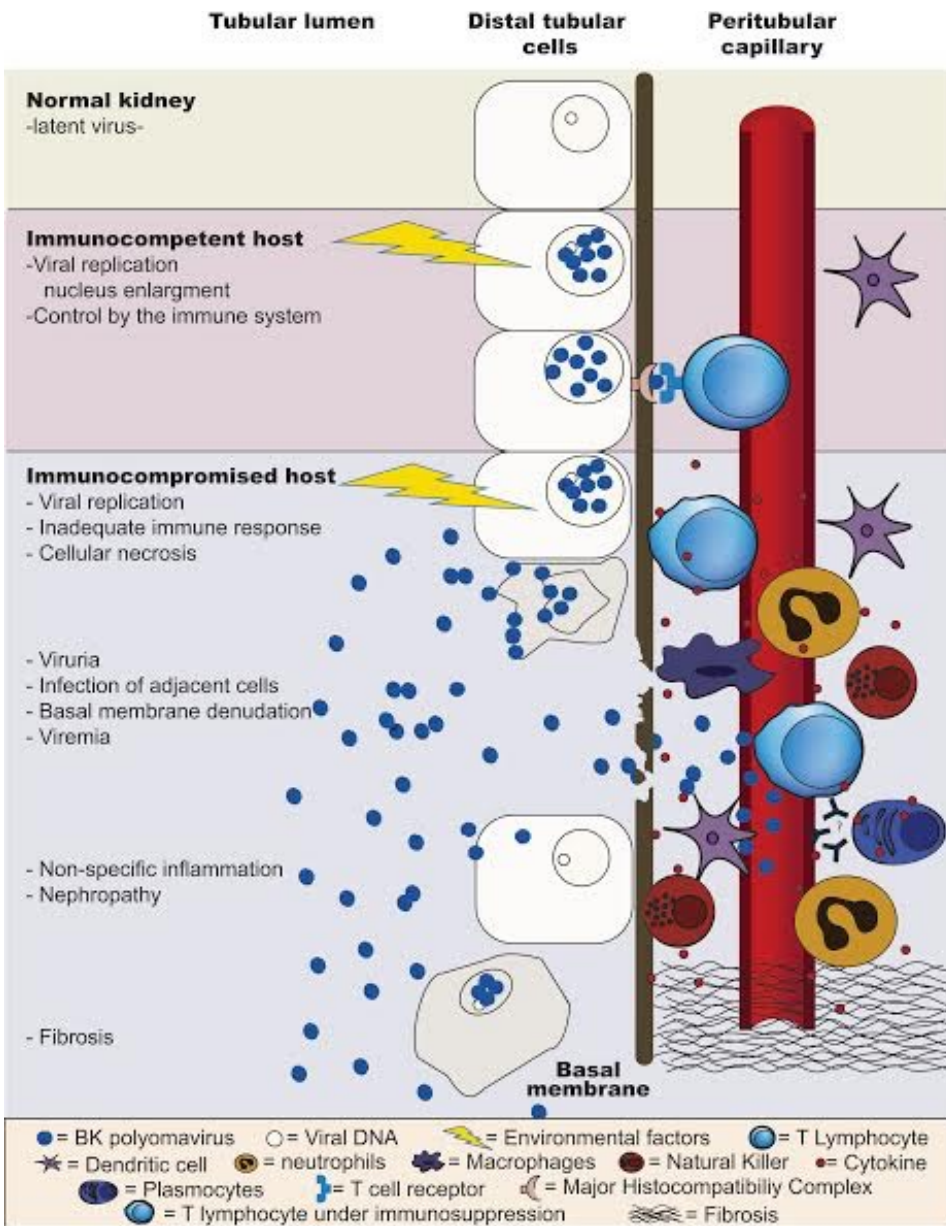
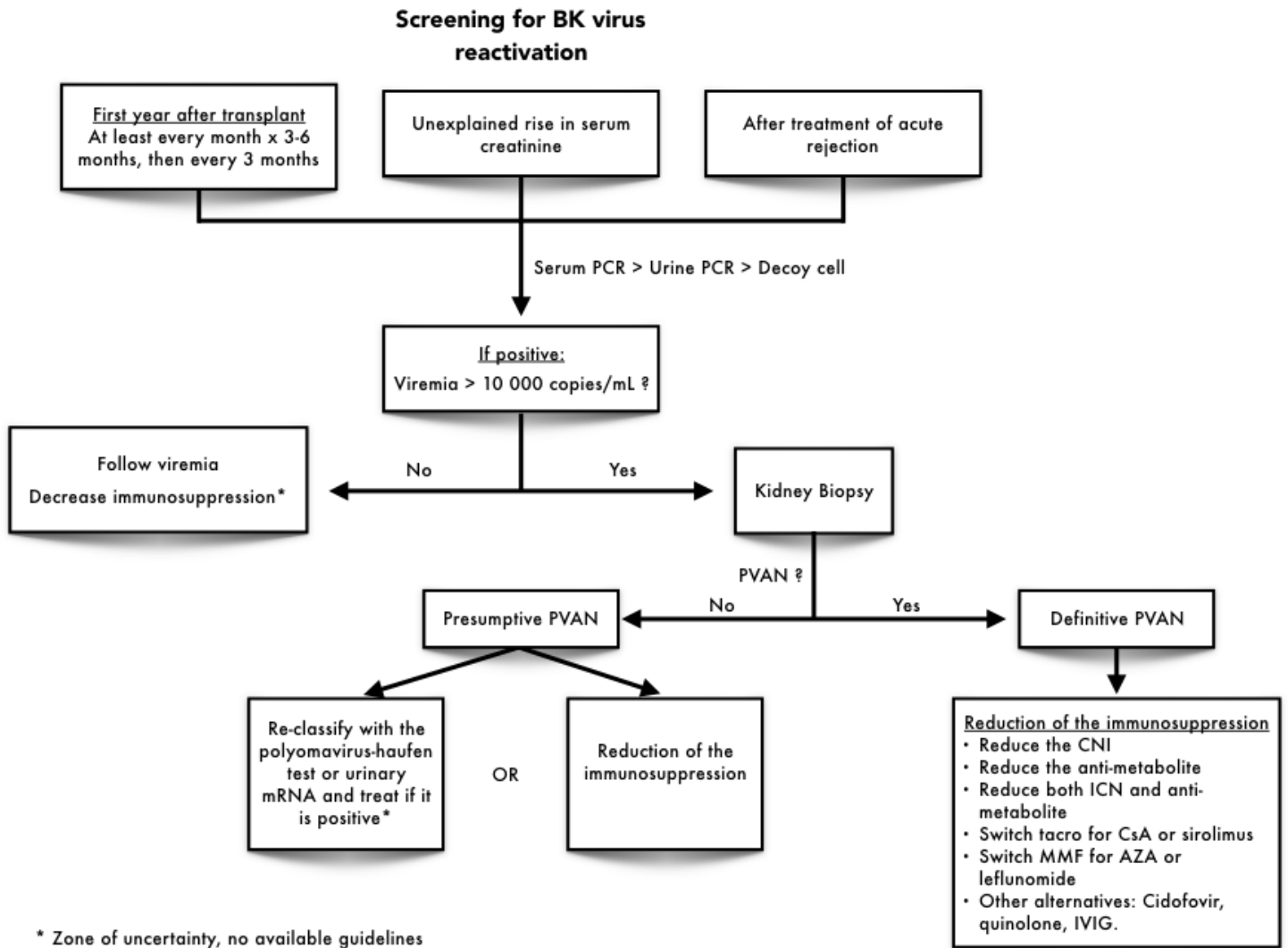


Figure 3



* Zone of uncertainty, no available guidelines

3- Immunothérapie adoptive

3.1 Mise en contexte

L'immunothérapie adoptive consiste à injecter à un patient des cellules immunes après une expansion *ex vivo*. Les cellules sont soit autologues, donc provenant du receveur ou allogéniques, donc provenant d'un donneur, qu'il soit HLA-identique ou non (Figure 2). Cette thérapie est principalement utilisée dans le traitement de cancers réfractaires ou pour le traitement d'infections virales chez les patients fortement immunosupprimés (principalement après une greffe de cellules souches hématopoïétiques ou d'un organe solide). De plus, l'infusion de lymphocytes T régulateurs peut être utilisée pour favoriser la tolérance après une transplantation (23) ou dans le traitement de maladies auto-immunes (24).

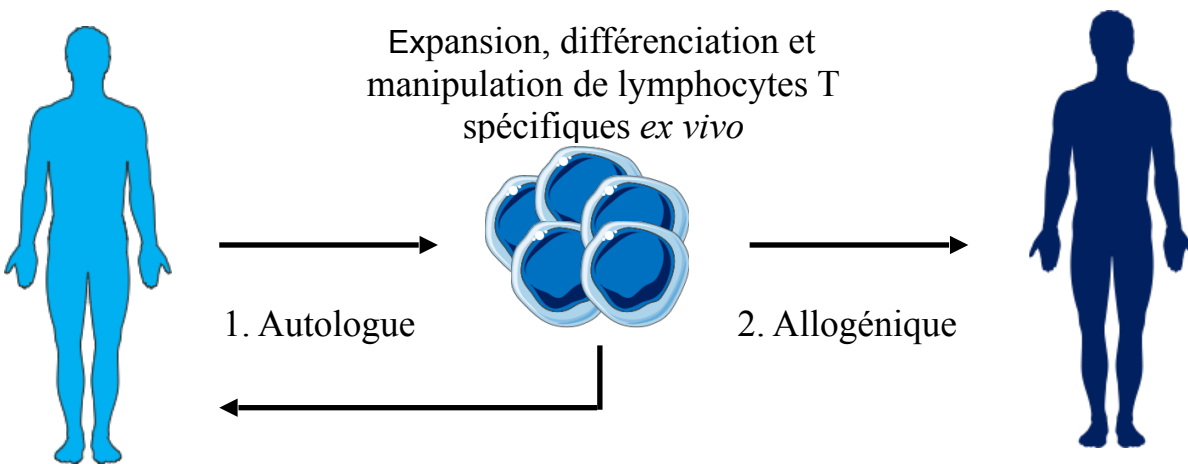


Figure 2. Immunothérapie adoptive

Les premiers transferts adoptifs de lymphocytes T mémoires virus-spécifiques se sont fait au début des années 90 afin de traiter les réactivations du cytomegalovirus (CMV) (25, 26) et d'Epstein-Barr virus (EBV) (27-29) chez les greffés de moelle. Les

premiers traitements ne consistaient qu'à infuser plusieurs leucocytes provenant du donneur, en espérant que plusieurs d'entre eux soient virus-spécifiques (infusion de lymphocytes du donneur/*donor lymphocyte infusions*). Cependant, cette approche entraînait plusieurs effets secondaires, tels qu'une réaction du greffon contre l'hôte (GVHD) (28, 30). Par la suite, les méthodes se sont raffinées afin de faire l'expansion que lymphocytes T virus spécifiques.

La source des lymphocytes doit être adaptée au contexte clinique. Pour traiter les patients ayant reçu une greffe de cellules souches hématopoïétiques, le donneur représente une bonne source de lymphocytes T parce que le système hématolymphoïde du patient est généralement de type donneur et particulièrement s'il est immun contre le virus pour lequel le receveur nécessite un traitement. C'est pourquoi le donneur a été utilisé dans la plupart des études visant à traiter l'EBV (29, 31-34), le CMV (26, 35-39), le polyomavirus JC (40) et même faire des lignées spécifiques pour plusieurs virus (41-44). La situation est plus complexe lorsque le répertoire du donneur est naïf (par opposition à un répertoire mémoire). Plusieurs ont réussi à manipuler les cellules *ex vivo* afin de leur conférer cette immunité mémoire, à l'aide de protocoles plus élaborés que ceux normalement utilisés (43, 45-48). Une autre solution est d'utiliser les cellules provenant d'un tiers (donc ni le donneur ni le receveur) étant le plus HLA-compatible que possible avec le receveur (30, 49-54). Cette compatibilité permet une plus grande réactivité anti-virale, cette réponse étant HLA-restreinte, ainsi qu'une réduction du risque de GVHD. Des banques de donneurs peuvent même être utilisées.

Dans les cas de transplantations d'organes solides, souvent HLA disparates, l'utilisation du donneur d'organe est souvent impossible et ne serait pas souhaitable puisque ses lymphocytes seraient rapidement rejetés par l'immunité du receveur et pourraient induire une GVHD. L'utilisation d'une tierce partie représente également un risque de réaction allogénique (rejet ou GVHD), surtout si elle n'est pas HLA identique. Il est donc préférable d'utiliser des lignées autologues ayant un plus grand potentiel de persistance (55-59). Le défi est alors de faire des lignées à partir du sang de patients immunosupprimés.

3.2 Efficacité / Innocuité

L'efficacité de l'immunothérapie adoptive antivirale est principalement démontrée pour la prévention et le traitement de syndromes lymphoprolifératifs post-transplantation (PTLD) qui sont majoritairement secondaires à une réactivation à EBV. À ce jour, plus de 100 patients ont reçu les lignées EBV-spécifiques en prophylaxie. De ces patients, aucun n'a développé de PTLD. De plus, les lignées antivirales ont été prouvées sécuritaires puisqu'aucun patient n'a développé de maladie du greffon contre l'hôte (GVHD) (30). Pour le traitement des PTLD, l'efficacité semble varier entre 50 à 70 % de rémission partielle ou complète (30, 52, 56) chez des patients qui étaient réfractaires au traitement médical standard. De plus, il faut considérer une grande hétérogénéité dans le mode de production des lignées (donneur autologue, allogénique ou tierce partie), dans la dose utilisée (allant de 2 doses de $10 \times 10^6/m^2$ (29, 33) à 4 doses de $2 \times 10^6/kg$ (52)) ainsi que dans les critères

utilisés afin de parler de rémission. Bien que ces données ne peuvent pas directement prédire le fonctionnement de telles lignées dans d'autres situations cliniques, telle la néphropathie au polyomavirus BK, elles montrent néanmoins que l'immunothérapie adoptive est une thérapie ayant un réel potentiel thérapeutique et que cela semble très sécuritaire.

3.3 Différenciation des lymphocytes T

En plus des multiples différences identifiées ci-haut entre les différents protocoles d'immunothérapie adoptive, il semble que tous les lymphocytes T antigène-spécifiques ne soient pas égaux. En effet, il est de plus en plus accepté qu'il existe une corrélation entre le potentiel de renouvellement d'une cellule et son statut de différenciation (60).

L'activation d'un lymphocyte T naïfs se produira lors de la liaison de son TCR (et du CD3) avec un complexe CMH-antigène présent sur une cellule présentatrice d'antigène (notamment les cellules dendritiques) qui lui est spécifique, si la force de la stimulation est suffisante. Cette dernière sera proportionnelle à la concentration et l'affinité de l'antigène, aux stimuli de costimulation positifs et la durée de l'interaction (61). Une fois activé, il va proliférer et se différencier en lymphocyte T effecteur pouvant migrer au site inflammatoire ou en lymphocyte T mémoire, capable de produire une réponse encore plus grande lors d'un stimulus secondaire.

Sallusto et ses collègues ont été les premiers à suggérer deux sous-types de lymphocytes T mémoires, soit central (Tcm) ou effecteur (Tem), basé sur leur localisation, l'expression de marqueurs de surfaces et leur fonction effectrice (62). Les Tcm expriment CCR7, un récepteur de chimiokine, et CD62L, une molécule d'adhésion (63). Ils n'ont que peu de capacités effectrices immédiates et on les retrouve surtout dans les organes lymphoïdes secondaires. Les Tem, quant à eux, ont la capacité de migrer vers les tissus inflammés et sont donc retrouvés soit dans les organes lymphatiques secondaires ou en périphérie. Ils ont des fonctions effectrices immédiates et n'expriment pas CCR7 (62). Finalement, en aval de la chaîne de différenciation on retrouve les lymphocytes T effecteurs, ayant un maximum de fonctions effectrices immédiates mais une durée de vie plus courte (60). Selon le modèle de différenciation progressive, d'abord proposé par Lanzavecchia, c'est la force de stimulation qui dictera la différenciation (Figure 3) (64).

Ayant un plus grand potentiel prolifératif, les Tcm seraient donc préférables en immunothérapie adoptive. En effet, ils ont une plus grande capacité de persister *in vivo* et ont un plus grand potentiel prolifératif lors d'une re-stimulation (65). L'avantage des Tcm sur les Tem a été démontré dans un modèle vaccinal (66), des modèles tumoraux (63, 67) et avec de l'immunothérapie adoptive anti-cancer (68). De plus, dans un modèle d'immunothérapie chez des primates non humains, seulement les Tcm avaient la capacité de persister à long terme *in vivo* et avaient toutes les caractéristiques de cellules mémoires (69). Gattinoni et ses collègues ont également démontré la présence chez l'humain d'un sous-groupe de lymphocytes T mémoires

ayant des propriétés de cellules souches (Tscm) (70). Ils possèdent des marqueurs de surfaces semblables aux lymphocytes naifs (CD62L, CCR7, CD45RA), mais se distinguent principalement de ces derniers par une relâche rapide de cytokines après activation ainsi qu'une plus grande capacité de prolifération en réponse à une stimulation avec de l'IL-15 (70). Ils se distinguent des lymphocytes T naifs par la présence CD95 et de CD122 à leur surface. Étant en amont de la chaîne de différenciation, ces lymphocytes pourraient être avantageux en immunothérapie adoptive (60). Cependant, ils ne représentent que 2 à 3 % des lymphocytes T (70).

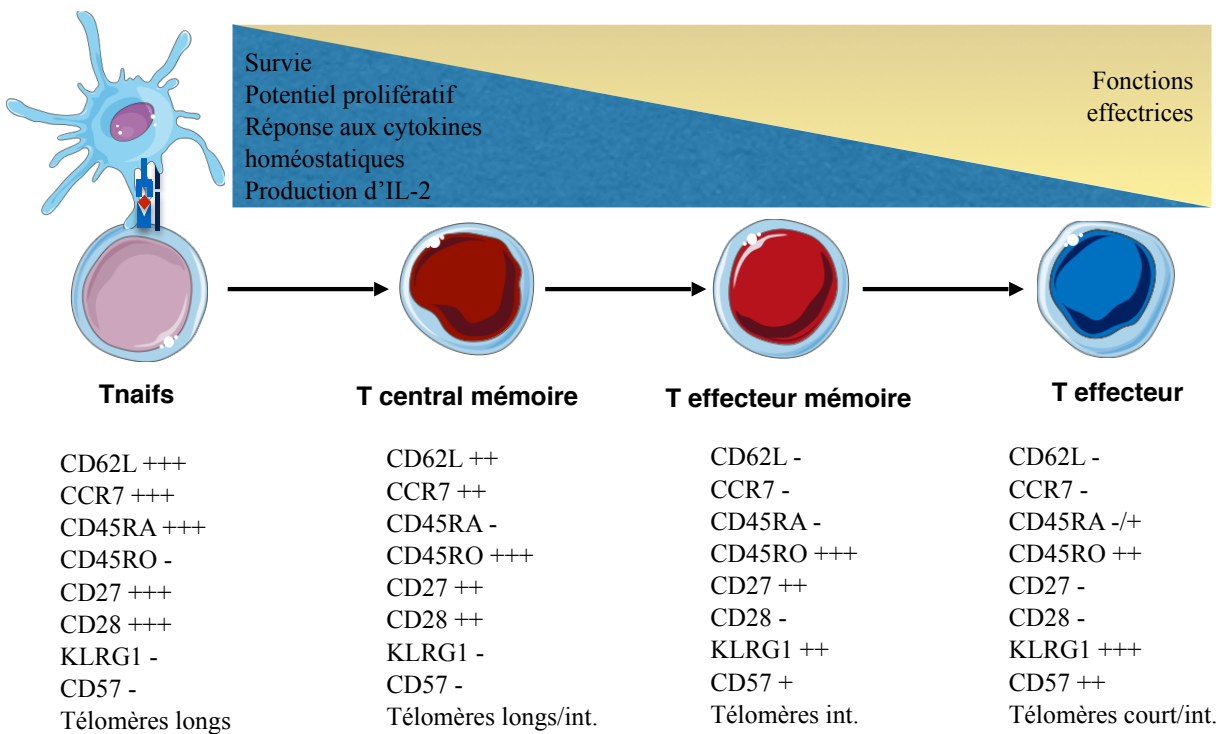


Figure 3. Différenciation des lymphocytes T, adapté de Gattinoni L et al., 2012 (60)

3.4 Résumé

L'immunothérapie adoptive serait donc une thérapie idéale pour la prévention ou le traitement de la néphropathie associée au polyomavirus BK puisqu'elle permettrait d'augmenter l'immunité spécifique contre le virus sans augmenter le risque de rejet. Dans un contexte de transplantation d'organe solide comme la transplantation rénale, le protocole idéal comportant le moins de risque pour le patient, consisterait en une infusion autologue. Le défi est donc de produire des lignées à partir de sang de patients soumis aux immunosuppresseurs et à une exposition virale chronique. De plus, les patients étant chroniquement immunosupprimés, une maximisation de la différenciation centrale mémoire pourrait améliorer la survie de la lignée post réinfusion (65, 68, 69).

3.5 Hypothèse et objectifs

Notre hypothèse est que malgré l'exposition chronique au polyomavirus BK et la présence d'immunosuppresseurs, il serait possible d'obtenir des lignées de lymphocytes T BK-spécifiques à partir du sang de patients greffés rénaux réactivant le virus. Nos objectifs étaient donc de produire ces lignées à l'aide d'un protocole qui pourrait être utilisé en clinique, de démontrer leur spécificité pour le polyomavirus BK, d'évaluer leur risque de réaction allogénique et de les comparer à celles obtenues à partir du sang de donneurs sains.

RÉSULTATS

4- Résultats

4.1 Clinical-scale Rapid Autologous BK-virus Specific T cell Line generation from Kidney Transplant Recipients with Active Viremia for Adoptive Immunotherapy

L'utilisation d'immunosuppresseurs plus puissants en greffe rénale a permis d'améliorer la survie des greffons, au dépens d'une augmentation du risque néoplasique et infectieux. C'est ainsi que nous avons vu l'émergence de néphropathies associées au polyomavirus BK, pouvant évoluer jusqu'à la perte de greffon. Pour l'instant, le seul traitement démontré efficace de cette pathologie est une diminution de l'immunosuppression globale, augmentant de façon conséquente le risque de rejet. Notre objectif était donc de produire des lignées antivirales BK-spécifiques à partir du sang de patients greffés virémiques pour le BK, afin de prévenir et traiter la néphropathie associée au polyomavirus. Nous avons tout d'abord comparé les lignées obtenues à partir de greffés rénaux à celles obtenues à partir de donneurs sains. Bien que comparables au niveau de la spécificité et de la différenciation, l'expansion cellulaire chez les greffés n'était pas suffisante pour obtenir systématiquement une dose thérapeutique. L'ajout d'une stimulation à l'aide de cellules dendritiques nous a permis d'améliorer cette expansion cellulaire en plus de favoriser un phénotype central mémoire et d'améliorer la spécificité. Bien que polyclonales, les lignées cellulaires n'ont pas démontré d'alloréactivité *in vitro* et *in vivo*. De plus, nous avons démontré leur capacité de persister et de proliférer *in vivo*.

Statut: Accepté

Journal: Transplantation

Contribution des auteurs:

CL: Conception de l'étude, expérimentation et rédaction du manuscrit.

JO, MG, TP, AD, VGT, AB, LB: Aide à l'expérimentation et révision du manuscrit

CC et JSD: Conception de l'étude, supervision et aide à la rédaction du manuscrit

Clinical-scale Rapid Autologous BK-virus Specific T cell Line generation from Kidney Transplant Recipients with Active Viremia for Adoptive Immunotherapy

Lamarche C.^{1,2,3}, Orio J.¹, Georges-Tobar V¹, Pincez T.¹, Goupil M.¹, Dahmani A.¹, Carli C.¹, Brasey A.¹, Busque L.^{1,4}, Delisle J.-S.^{1,3,4}

Affiliations:

¹ Centre de Recherche de l'Hôpital Maisonneuve-Rosemont (CRHMR), Université de Montréal, Montreal, Canada

² Division of Nephrology, Department of Medicine, Hôpital Maisonneuve-Rosemont (HMR), Université de Montréal, Montreal, Canada

³ Investigators, Canadian National Transplant Research Program (CNTRP)

⁴ Division of Hematology, Department of Medicine, Hôpital Maisonneuve-Rosemont (HMR), Université de Montréal, Montreal, Canada

Corresponding author:

Jean-Sébastien Delisle, MD, PhD
Email: js.delisle@umontreal.ca

Abbreviations:

BrdU, 5-Bromo-2'-deoxyuridine
CMV, cytomegalovirus
DC, dendritic cell
EBV, Epstein-Barr virus
VP1, Virus-encoded protein 1
LTA, Large T antigen
ELISpot, IFN γ enzyme-linked immunospot assay
GVHD, graft-versus-host disease
HC, healthy control
KTR, Kidney transplant recipient
NSG, NOD/SCID/IL2R γ^{null}
PBMC, peripheral blood mononuclear cells
PVAN, Polyomavirus-associated nephropathy
T_{cm}, central memory T cell
T_{em}, effector memory T cell
T_n, naive T cell

Abstract

Background: Polyomavirus-associated nephropathy (PVAN) following BK virus reactivation in kidney transplant recipients (KTR) can compromise graft survival. Lowering immunosuppression is the only established approach to prevent or treat PVAN but non-specifically increasing host immune competence also augments rejection risk. *Ex vivo* T cell stimulation/expansion offers the possibility to generate BK-specific T cell lines for adoptive immunotherapy. The objective of this study was to develop and characterize a clinical scale protocol to generate BK-specific T cell lines from viremic KTR.

Methods: Peripheral blood mononuclear cells from healthy controls (HC) and viremic KTR were stimulated using BK-virus peptide libraries loaded or not on monocytes-derived dendritic cells. Cell counts, flow cytometry and next-generation sequencing were respectively used to assess T cell expansion, differentiation and clonal diversity. Enzyme-linked immunospots, cytotoxicity assays as well as adoptive transfer in NOD/SCID/IL2R γ^{null} (NSG) mice were used to assess for pathogen-specificity and alloreactive potential of the generated T cell lines.

Results: T cell lines from KTR and HC showed similar characteristics, implying that ongoing immunosuppression and chronic virus exposure do not adversely affect the differentiation, specificity or clonal diversity of the T cell lines following *ex vivo* production. Using antigen-loaded dendritic cells improved T cell expansion, favored central memory T cell differentiation. The T cell lines were antigen-specific, with no evidence of alloreactive potential.

Conclusions: Using a rapid, clinically-compliant culture system, we show that autologous BK virus-specific T cell lines can be reliably generated from viremic KTR. Our results pave the way for the treatment or prevention of PVAN with adoptive immunotherapy.

Introduction

Latent BK polyomavirus infection in the urothelium is highly prevalent¹. Reactivations are frequent in immunocompromised patients and pose a particular problem to kidney transplantation recipients (KTR). Polyomavirus-associated nephropathy (PVAN) can occur in up to 10% of KTR² and lead to graft loss in up to 50% of cases^{3,4}. Reduction of immunosuppression is the most accepted strategy to treat BK-related complications⁵ but has the disadvantage of increasing rejection risk by non-specifically increasing immune competence. Hence, KTR anti-viral immunity remains the cornerstone of PVAN prevention and treatment. The selective augmentation of host anti-BK immunity without a concomitant increase in the risk of graft rejection could solve the clinical conundrum facing transplant nephrologists treating PVAN. Adoptive immunotherapy using *ex vivo* expanded autologous BK-specific T cells from KTR may represent such ideal strategy.

It was recently shown in allogeneic hematopoietic cell transplantation that donor-derived T cell lines generated *ex vivo* and targeting several viruses, including BK virus, could control viremia and BK-related complications⁶. In solid organ recipients, adoptively transferred autologous or “third party” (neither derived from the donor nor the recipient) Epstein-Barr virus (EBV) or Cytomegalovirus (CMV)-specific T cell lines appear efficacious and safe despite ongoing immunosuppression⁷⁻¹⁰. Whether similar promising results could be obtained in refractory BK viremia or PVAN remain to be

established as no study using BK-specific T cell lines in the KTR population have been reported. As an essential stepping stone for the design of such trials is the development of reliable T cell manufacturing protocols that can be readily implemented in cell processing facilities.

In this work, a clinical-compliant system to rapidly generate BK virus-specific T cell lines was adapted and validated using both healthy control (HC) and KTR suffering from active or presumptive PVAN. Using as model a culture protocol capable of expanding virus-specific T cell lines from peripheral blood mononuclear cells (PBMC) in 9-14 days from healthy donors^{6,11,12}, we show that the reliable clinical-scale expansion of BK-specific T cell lines requires the addition of autologous BK virus antigen-pulsed monocyte-derived dendritic cells (DC). The use of DC not only improved T cell expansion but it also favored the generation of central memory T cells and conferred increased antigenic specificity. T cell lines derived from both HC and KTR were polyclonal, further expanded and persisted upon transfer into immunodeficient mice but did not show off-target alloreactivity *in vitro* and *in vivo*. Collectively, this work describes a readily translatable approach to manufacture autologous BK-specific T cell lines from KTR for adoptive immunotherapy.

Materials and Methods

Donors and T cell line generation

A total of 8 KTR from a single center and 5 volunteer HC were recruited on internal review board approved protocols (CÉR 13030 and 13125) for the various experiments conducted in this study. The KTR were all suffering from active viremia and 6 carried a diagnosis of definitive PVAN (Supplementary Table 1). PBMC were isolated from up to 200 ml of blood by gradient density separation (Ficoll-Paque, GE Healthcare, Baie d'Urfe, Canada). When indicated, cells were cryopreserved (20 to 50 x 10⁶ cells per vial) in 10% dimethyl sulphoxide (DMSO, Sigma-Aldrich, Oakville, Canada), 20% human serum (Sigma-Aldrich) and 70% RPMI.

A total of 10 to 15 x 10⁶ PBMC were directly pulsed with overlapping peptide libraries from virus-encoded protein 1 (VP1) and Large T antigen (LTA) as in ^{12, 11} (100 ng of each library in minimal volume for 30 minutes) (JPT, Berlin, Germany), or were co-cultured in a 1:10 ratio (stimulator: effector) with irradiated autologous DCs (40cGy) pulsed for 2 hours with the two peptide libraries (1µg/ml). T cell lines were generated in 14 days, using either peptide-pulsed PBMC or DC as previously described^{12,13}. Specifically, all T cell cultures were performed using T cell media (45% Advanced RPMI 1640, 45% Click's medium, 10% human serum, 1X L-glutamine, IL-4 (1666U/mL-Feldan, Québec, Canada) and IL-7 (10ng/mL-Miltenyi, Auburn, CA) in a G-Rex10 vessel (Wilson Wolf Manufacturing, New Brighton, MN) and incubated at 37°C and 5% CO₂. DC were prepared from circulating monocytes isolated by plastic

adherence and differentiated into DC as previously described¹³. Cells were counted by trypan blue exclusion with an automated cell counter (Countness, Invitrogen). At day 8 and 12, cultures were split if the cell concentration exceeded 45×10^6 cells/mL.

IFN γ enzyme-linked immunospot assay (ELISpot), cytotoxicity assays and flow cytometry

ELISpot assays and analysis were performed by exposing 5×10^4 cells to the VPI or LTA antigenic peptide libraries, a non-targeted peptide library (negative control) or stimulated with an anti-CD3 antibody (positive control) overnight, according to the manufacturer's instructions (Mabtech Inc., Cincinnati, OH and vSpot Reader Spectrum, AID, Strassberg, Germany). Cytotoxicity was performed using a standard 4-hour chromium release assay using autologous or allogenic phytohemagglutinin (PHA, Sigma-Aldrich) blasts pulsed with antigenic peptide libraries¹². Cells were surface stained with monoclonal antibodies to: CD3, CD4, CD8, CD45RO, CD62L (BD Biosciences, Mississauga, ON), washed and fixed in PBS 2% FBS 1% PFA before acquisition on a LSRII instrument (BD Biosciences, Mississauga, ON). Data were subsequently analyzed using Flowlogic software (Inivai Technologies, Mentone, Australia) or Kaluza (Beckman Coulter, Indianapolis, IN).

Adoptive transfer in NOD/SCID/IL2R γ ^{null} mice

Seven- to 12-week-old NOD/SCID/IL2R γ ^{null} (NSG) mice were subjected to total body irradiation (250 cGy). The following day, the mice were injected

intravenously with 0.5×10^6 human T cells from either a 14 days culture (as described above) or a CD3+ positive selection of unstimulated T cells (Stemcell Technologies, Vancouver, BC). Intraperitoneal injections of rhIL-15 (1 μ g, 2000 U; Miltenyi) were administered twice a week for 3 weeks. Venipunctures were obtained weekly from week 2 or 3 until death or sacrifice (100-200 μ L). Skin, liver, colon and short bowel samples were fixed in 10% formalin, embedded in paraffin and stained with hematoxylin-eosin phloxine. When indicated, mice received 2 mg of 5-Bromo-2'-deoxyuridine (BrdU, Sigma-Aldrich) intraperitoneally every second day for 14 days starting on day 7 post transfer. The protocol was approved by the institutional authorities according to Canadian Council on Animal Care (CCAC) regulations. BrdU incorporation was assessed with flow cytometry using anti-BrdU monoclonal antibody (BD Biosciences) after a staining using BD Perm/Wash™ Buffer, BD Cytoperm™ Permeabilization Buffer Plus and Deoxyribonuclease I (Sigma-Aldrich), according to the manufacturer's instructions.

Clonality analysis

Next-Generation-Sequencing (NGS) DNA-based TCR-gamma chain analysis was performed for clonality determination. DNA was extracted from T cell lines using DNAzol (Invitrogen) and quantified with the Qubit 2.0 system (ThermoFisher Scientific, Waltham, MA). TCR gamma-chain was amplified from 50ng of gDNA with LymphoTrack TRG assay (invivoscribe, San Diego, CA) and AmpliTaq Gold DNA polymerase (ThermoFisher Scientific) in the

SimpliAmp Thermal Cycler (ThermoFisher Scientific). Amplicons with sizes greater than 100 base pairs were positively selected with Agencourt AMPure XP beads (Beckman Coulter, Brea, CA). The libraries obtained were quantified on the ViiA 7 Real-Time PCR System with the Ion Library Taqman Quantitation kit (ThermoFisher Scientific). Next generation sequencing was completed on the Ion Proton semiconductor platform (ThermoFisher Scientific) using an Ion P1 v3 chip (ThermoFisher Scientific), prepared with the Ion Chef System (ThermoFisher Scientific). Fastq data were analyzed with the LymphoTrack Bioinformatics Software (InvivoScribe). Up to 200 unique reads or 10% of total reads were obtained after the merging of duplicates using MAFFT, multiple sequence alignment software version 7 and determining the CDR3 region by IgBlast (www.ncbi.nlm.nih.gov/igblast/). Single nucleotide differences between 2 sequences outside the CDR3 region were considered sequencing errors. Clonality index was calculated using Shannon's Entropy formula, as described by Harden and colleagues¹⁴.

Statistical analysis

All statistical analyses were performed using unpaired Student t-test using GraphPad Prism (version 5.0c; GraphPad Software) unless otherwise specified. P values < 0.05 were considered significant. Kaplan-Meier survival analysis was used for NSG mice.

Results

BK virus-reactive autologous T cell lines can be generated from viremic KTR

We initially used a protocol that has been shown to generate clinical-scale virus-specific T cell lines in just 9-14 days following the stimulation of PBMC with synthetic overlapping peptide libraries that cover the entire length of immunogenic viral proteins (overlapping 15-mers)^{11,12}. Peptide libraries from two immunogenic BK virus proteins, VP1 and LTA, were used to stimulate T cells. This choice was based on previous studies highlighting the importance of these proteins in the generation of protective immune responses in the case of BK virus reactivation in KTR^{4,15,16} and previous experience in allogeneic hematopoietic cell transplantation using T cell lines generated with these peptide libraries⁶. Direct stimulation of PBMC from HC (n=4) and KTR (n=5) revealed that VP1 and LTA-specific T cell lines are generated in both cases. (Figure 1). However, cellular expansion was highly variable (fold expansion mean of 12.1 ± 7.4 for HC and 4.6 ± 1.9 for KTR, $p=0.155$) (Figure 1A). Less than 50 million cells were obtained for 3/5 T cell lines generated from KTR PBMC, which may not be sufficient for treatment and ancillary testing at cell doses previously used in anti-viral adoptive immunotherapy trials^{6,9,17}. Irrespective of donor type, the T cell lines contained more than 90% of CD4+ or CD8+CD3+ T cells (Figure 1B). Naive (T_n), central memory (T_{cm}) and effector memory (T_{em}) subsets were further defined based on CD45RO and CD62L expression. No differences were noted between T cell lines from HC

and KTR, which both contained a mixture of T_n, T_{cm} and T_{em} phenotype T cells (Figure 1C). Finally, T cell lines were assessed for reactivity against VP1 and LTA peptide libraries using the IFN- γ ELISpot assay (Figure 1D). Despite clear-cut reactivity to VP1 and LTA, the T cell lines from both HC and KTR displayed low-grade reactivity against control adenoviral peptides derived from the highly immunogenic Hexon protein.

Taken together, these results show that BK-reactive T cell lines can be rapidly generated from HC and KTR, but at levels that may not support clinical use. The use of PBMC previously exposed to BK-virus did not otherwise impact T cell differentiation or reactivity relative to PBMC from HC.

Peptide-loaded DC stimulation improves T cell expansion, specificity and differentiation

We next sought to determine whether improved expansion, differentiation and antigen-specificity of anti-BK virus T cell lines from viremic KTR could be achieved using DCs instead of PBMCs as antigen-presenting cells¹³. To this end, VP-1 and LTA peptide library pulsed-autologous monocytes-derived DC¹³ were used at the beginning of the culture in 4 patients. PBMC containing responder T cells (cryopreserved at the time of blood collection) were added to mature DC pulsed with the antigenic libraries. This significantly increased KTR T cell lines expansion to clinical scale levels in all donors tested (Figure 2A)⁶. Although the proportion of CD4⁺ and CD8⁺ T cells were similar with both protocols (not shown), the addition of DC stimulation altered the differentiation

profile (Figure 2B). At the end of the 14-day culture, we noted an increase in the percentage of Tcm and a decrease in the proportion of Tn in the cultures stimulated with DC relative to the original condition. In HC, the addition of DC similarly increased expansion, but the variation in Tn or Tcm did not reach statistical significance (Supplementary Figure 1). The use of peptide-pulsed DC also led to more specific antigen reactivity as evaluated by ELISpot. Compared to the reference condition, T cell lines generated from DC-stimulated PBMC showed little to no reactivity towards adenoviral peptides resulting in a high ratio of VP1 to Hexon spot count (Figure 2C-D). The LTA/Hexon spot count ratio also improved but the difference was not statistically significant. These results show that the use of a single round of peptide-pulsed autologous DC improves BK-specific T cell generation in KTR in terms of expansion, differentiation and antigen specificity.

T cell lines obtained from viremic KTR and HC are similarly polyclonal

Chronic infections such as HIV¹⁸, EBV¹⁹ and CMV²⁰ and end-stage renal disease²¹ are proposed to narrow TCR repertoires. *In vitro* expansion of antigen-specific T cells can also restrict the TCR repertoire^{22,23}. Rapidly generated T cell lines from both HC and actively BK viremic KTR were polyclonal (Figure 3) as assessed by a robust TCR γ chain next-generation sequencing approach to identify clonal populations from all mature T cell subtype populations²⁴. The absolute number of unique reads was not statistically different between both groups, with a mean of 724794 \pm 113824

(HC) and 547837 ± 44741 (KTR), $p=0.099$ (Figure 3A). Polyclonality was further estimated using the clonality index as proposed by Harden et al. and applied to our results¹⁴. Both groups had similar indices, with means of 0.240 ± 0.036 (HC) and 0.246 ± 0.044 (KTR), $p= 0.448$ (Figure 3B). An index toward 0 is indicative of a polyclonal repertoire while an index closer to 1 infers oligoclonality. No difference were found between the two groups in terms of number of clones required to reach 10 percent of the total reads (Figure 3C) or the percentage of total reads represented by the 20 most prevalent clones in each T cell line (Figure 3D). Thus, rapidly generated T cell lines remained polyclonal in both HC and KTR despite BK-virus antigen restriction, suggesting that KTR maintain a large repertoire that can be mobilized for adoptive immunotherapy.

BK-specific T cell lines are not alloreactive in vitro and in vivo

The prospect of infusing *ex vivo* activated polyclonal autologous T cells to solid organ recipients raises the concern of inducing cellular rejection, despite previous evidence that T cell lines targeting other viruses were safe in this population^{7,9,17}. Hence, we tested whether VP-1/LTA-specific T cell lines displayed evidence of alloreactivity *in vitro* and *in vivo*. The BK-specific T cell lines generated following peptide-loaded DC exposure did not lyse allogeneic or autologous targets (loaded or not with a control peptide library) and, as expected from the ELISpot data, we noted a dose-related specific cell cytotoxicity of autologous targets loaded with the VP1 and LTA peptide libraries

(repeated measures ANOVA $p=0.057$ for 10:1, $p=0.048$ for 20:1 and $p=0.027$ for 40:1) (Figure 4A). To further ascertain that the T cell lines lacked alloreactive potential, we performed adoptive transfer into NOD/SCID/IL2R γ^{null} (NSG) immunodeficient mice. Mice were given hIL-15 to support engraftment in the first three weeks post transfer²⁵. While NSG mice cannot reject the xenogeneic human cells, they express murine histocompatibility antigens that are recognized with high avidity by human T cells resulting in severe xenogeneic graft-versus-host disease (GVHD). As such, it represent a stringent system to test for alloreactive potential. As anticipated, T cells directly isolated from PBMC caused lethal GVHD (decreased activity, skin changes, prostration and weight loss) 36 to 63 days post adoptive transfer. In contrast, the infusion of an equal number of cells from the *ex vivo* generated T cell lines was very well tolerated (Figure 4B-C). Histological evidence of GVHD was present in the skin and liver²⁶ of unmanipulated T cell recipients, but not in mice injected with T cell lines (Figure 4D). Neither group had significant evidence of intestinal GVHD (not shown). Collectively, these data support the notion that rapidly generated anti-BK T cell lines do not retain alloreactive potential.

BK-specific T cell lines can expand and persist in vivo.

The success of adoptive immunotherapy hinges on the capacity of the infused T cells to expand *in vivo* after transfer and persist. We used the NSG mouse model to assess whether the adoptively transferred BK-specific T cells lines

were capable of expanding in response to a homeostatic stimulus and persist after adoptive transfer. Labeling experiments with BrdU showed that a fraction of adoptively transferred T cells proliferated in the first three weeks, while human IL-15 was supplemented. When compared to T cells from mice not exposed to BrdU, spleen CD4+ (mean of 11.48% \pm 2.57 versus 4.20% \pm 1.03) and CD8+ (mean of 13.44 % \pm 1.45) from BrdU-exposed mice showed evidence of BrdU incorporation (Figure 5A). Weekly peripheral blood sampling further revealed that the percentage of human T cells continued to increase after IL-15 supplementation. We noted that compared to week 3, both CD4+ and CD8+ had expanded at week 6 (paired T-test $p=0.028$ for CD4+ and $p=0.034$ for CD8+) (Figure 5B). In all animals followed until 11-12 weeks post-transfer ($n=11$), human T cells persisted without clinical evidence of GVHD (Figure 5C). Collectively these data indicate that *ex vivo* generated BK-reactive T cell lines maintain their capacity to proliferate and persist *in vivo* without triggering xenogeneic GVHD.

Discussion

We report herein a rapid, clinically compliant protocol to generate autologous BK-specific T cell lines from PVAN or actively BK viremic KTR from a single venipuncture. This process required stimulation with antigen-pulsed DC to achieve clinical-scale expansion in contrast to a similar culture system already used in clinical trials, which has been shown to generate EBV-specific or multi-virus (including BK) specific T cell lines from PBMC alone^{6,11,12}. The reasons

why stimulation with BK antigenic peptides alone resulted in low T cell expansion might be related to the immunogenicity of the VP1 and LTA peptide pools or the nature of the BK-specific repertoire in HC and immunocompromised KTR. Two other studies have similarly reported limited growth of BK-specific T cells^{22,27}. Blyth et al. generated T cell lines from 12 hemodialysis patients, one healthy control and one KTR. The T cell line from the KTR expanded 0.9 fold and contained 75% CD3+ and 21% CD56+CD3- cells, suggesting the presence of NK cells. Likewise, Comoli et al. generated T cell lines using inactivated virus pulsed on DC and IL-2 from 6 KTR, which expanded poorly (1.5 fold). Expansion was improved using IL-12 and IL-7 early in the culture process but this led to the presence of a large proportion of $\gamma\delta$ T cells (up to 69%), whose potential relevance to adoptive immunotherapy of refractory viral infections is unclear. This contrasts with our results showing the reliable expansion of CD4+ and CD8+ T cells after the use of dendritic cells for antigen presentation. Recently, Dasari and colleagues proposed an elegant method to obtain multivirus-specific T cell lines from solid organ recipients using an adenoviral vector coding for several HLA-restricted antigens as a platform for antigen presentation. Two cell lines were obtained from PVAN patients but it is unclear whether this system expands BK-virus specific T cells to clinical scale levels²⁸.

The use of peptide-pulsed autologous DC decreased the proportion of Tn in the T cell lines and reciprocally increased Tcm but not Tem. This was to be expected using a system where T cell stimulation is increased²⁹. The improved

antigen specificity of the T cell lines may be linked to the decrease in T_n representation. Moreover, the generation of a T_{cm}-rich T cell product may be associated with greater clinical efficacy owing to the intrinsic features of this subset (long-term persistence, capacity to self-renew, *in vivo* proliferative potential) relative to T_{em} or more differentiated effectors³⁰. Therefore, the use of a single DC-based stimulation along with IL-4 and IL-7 generates T cell lines with favorable features for immunotherapy after two weeks of culture.

The T cell lines generated with our approach did not show evidence of alloreactive potential both *in vitro* and *in vivo* despite their polyclonality and capacity to expand and persist in NSG mice. Previous experiments with autologous anti-EBV T cell line generation from solid organ transplant recipients did not show donor-specific alloreactivity^{7,9,17}. Unfortunately, donor cells were unavailable to us to confirm these findings (6 KTR out of 8 received a transplant from a deceased donor and live donor were unreachable—Supplementary Table 1). Also, we could not evaluate the *in vivo* therapeutic efficacy of our T cell lines given that no mouse model of human BK-virus infection exists. This will have to be addressed in clinical trials. Our work paves the way for such trials by establishing a clinical-compliant protocol to generate autologous BK-specific T cell lines from KTR. In addition, our system is amenable to modifications in order to refine the preparation of BK-specific T cell lines. Among these, genetic engineering of virus specific T cell lines appears promising³¹. For instance, the expression of resistance genes allowing the virus-specific T cells to elude pharmacological immunosuppression may

further improve T cell function and persistence³¹. Moreover, our system could be used to generate third party BK-specific T cell lines given our results with healthy controls (Figure 1 and supplementary Figure 1). These third party T cell lines would require more extensive characterization to define anti-viral responses restricted to specific HLA alleles before they could be used and would be unlikely to persist long term after transfer ³²⁻³⁴. However, once characterized, they could be cryopreserved and banked for rapid distribution and use.

Acknowledgments

This work was supported by the *Canadian National Transplant Research Program (CNTRP)* *Astellas Research Innovation Grant* funded by Astellas Pharma Canada, Inc. and jointly established by Astellas Pharma Canada, Inc. as well as by Canada's Stem Cell Network (Stem cell therapies acceleration grant) through grants to JSD. CL is supported by training awards from the Council of Physicians, Dentists and Pharmacists of Hôpital Maisonneuve-Rosemont and the Quebec Society of Nephrology. JSD is a member of the Fonds de recherche du Québec-Santé (FRQS) ThéCell network and a FRQS Junior 1 Salary award. We are grateful to Lucie Boutin for patient recruitment, Drs Lynne Sénécal, Suzon Collette and Sylvie Lesage for helpful discussions, Martine Dupuis for flow cytometry, Vibuthi Dave and Denis-Claude Roy as well as animal care facility personnel for NSG mice.

Disclosure

The authors declare no conflicts of interest.

Figures

Figure 1. BK-specific T cell lines obtained from viremic kidney transplant recipients (KTR) are similar to those from healthy controls (HC)

Comparison of T cell lines from healthy control (HC) (n=4) to KTR (n=5) after 14-days in culture. A) Fold expansion (left), (horizontal bar in the middle represents the mean, top and bottom horizontal bars represent SEM), $p=0.155$ and absolute cell number (right) $p=0.291$. B) Percentage of CD3 + T cells and their distribution as CD4+ or CD8+ T cells. C) CD4+ and CD8+ T cell differentiation profile, as defined by CD45RO and CD62L, one representative dot plot (left) and compiled results (right, mean and SEM). D) One representative ELISpot result (for 5×10^4 cells plated) (top) and compiled results (bottom, mean and SEM). Hexon (adenovirus) peptide library was used as an irrelevant control peptide library (Irr). SEM, standard error of the mean, Tn, naive T cell (CD45RO-CD62L+); Tcm, central memory T cell (CD45RO+CD62L+); Tem, effector memory T cell (CD45RO+CD62L-).

Figure 2. DC stimulation improves T cell expansion, specificity and differentiation

Comparison of T cell lines from kidney transplant recipients (KTR) without (DC-, n=5) and with dendritic cell stimulation (DC+, n=4) at the end of the 14-days culture. A) Fold expansion (horizontal bar in the middle represents the mean, top and bottom horizontal bars represent SEM) $p=0.042$ (left) and absolute cell number at the end of the 14-days culture, $p=0.073$ (right). B)

CD4⁺ and CD8⁺ T cell differentiation profile, as defined by CD45RO and CD62L expression (representative dot plots on the left) and compiled results (right) represented as mean with SEM, $p=0.038$ for Tn CD4⁺ T cells and $p=0.008$ for Tcm CD8⁺ T cells. C) Comparison of the number of spots on ELISpot assay with and without DC stimulation and D) ratio of spots produced in response to targeted (VP1 or LTA) or control (Hexon) peptide libraries. Boxes are to represent the distribution of results with horizontal bars indicating the mean and whiskers representing SEM. $p=0.002$ for VP1/Hexon. SEM, standard error of the mean, Tn, naive T cell; Tcm, central memory T cell; Tem, effector memory T cell.

Figure 3. T cell line clonality from viremic kidney transplant recipients (KTR) and healthy controls (HC) are similar

At the end of the 14-days culture, DNA was extracted from HC and KTR T cell lines and TCR-gamma chain analysis was performed for clonality determination. A) Absolute number of unique TCR γ reads in the two groups ($n=4$ per group) and B) Clonality index between the two groups (mean with SEM). C) Schematic representation of the most abundant clones that represent 10% of total reads in all samples tested. D) Percentage of total reads represented by the 20 most prevalent sequences for both groups (mean with SEM). SEM, standard error of the mean.

Figure 4. BK-specific T cell lines do not induce alloreactivity *in vitro* and *in vivo*

At the end of the 14-days culture, alloreactivity potential was determined *in vitro* in a chromium-51 release assay. T cell lines were also infused in NSG mice to evaluate the *in vivo* alloreactive risk. A) Specific lysis (%) of four targets at three different effector:target ratios in a 4-hour chromium-51 release assay (n=4 T cell lines from HC and KTR, each value was obtained in triplicates, mean with SEM), repeated measures ANOVA for effector:target ratio of 10:1 (p=0.057), 20:1 (p=0.048) and 40:1 (p=0.027). Allogenic or autologous phytohemagglutinin (PHA) blasts were pulsed or not with peptide libraries, VP1/LTA or control pp65 (CMV) peptide libraries. B) Kaplan-Meier survival analysis after T cell lines (n=14) or freshly isolated T cells from PBMC (n=7) injections, from 4 different T cell lines, log-rank test, **p=0.001. C) Percent weight variation between the weight on the day of death (or sacrifice) and the day of infusion. Mean (SEM), ***p<0.001. D) One representative hematoxylin-eosin phloxine staining of liver and skin of a non-infused NSG and recipients of a BK-specific T cell line or freshly isolated unmanipulated T cells (10X). Arrows point out graft-versus-host disease manifestations (portal space infiltration and epidermal thickening), white bar in images=100µm. HC, healthy control, KTR; kidney transplant recipient; SEM, standard error of the mean.

Figure 5. BK-specific T cell lines can persist and proliferate *in vivo*.

Human BK-specific T cell lines were also injected in NSG mice to assess their persistence and proliferative potential *in vivo*. A) One representative histogram showing BrdU staining of CD4+ and CD8+ from mouse spleens expressed as the % of BrdU positive cells by flow cytometry and compiled results from 6 mice compared to mice not receiving BrdU (control) from 2 independent experiments for both CD4+ ($p=0.087$) CD8+ ($p=0.004$) T cells. Means are represented with SEM. B) CD4+ and CD8+ T cells expansion in the peripheral blood at week 6 compared to week 3, as measured by flow cytometry (number of events counted per standard volume of blood, time and speed of acquisition), $n=14$ from 4 independent experiments. C) One representative dot plot of CD4+ and CD8+ T cell in mouse's blood and spleen, 12 weeks after T cell line injection. SEM, standard error of the mean.

Description of Supporting Information

Supplementary Table 1. Patient characteristics

Supplementary Figure 1. Effect of DC stimulation on T cell expansion, differentiation and specificity in healthy donors

References

1. Gardner SD. Prevalence in England of antibody to human polyomavirus (B.k.). *British medical journal*. Jan 13 1973;1(5845):77-78.
2. Hirsch HH, Brennan DC, Drachenberg CB, et al. Polyomavirus-associated nephropathy in renal transplantation: interdisciplinary analyses and recommendations. *Transplantation*. May 27 2005;79(10):1277-1286.
3. Nickeleit V, Singh HK. Polyomaviruses and disease: is there more to know than viremia and viruria? *Current opinion in organ transplantation*. Jun 2015;20(3):348-358.
4. Lamarche C, Orio J, Collette S, et al. Bk Polyomavirus and the Transplanted Kidney: Immunopathology and Therapeutic Approaches. *Transplantation*. Jul 7 2016.
5. KDIGO clinical practice guideline for the care of kidney transplant recipients. *American journal of transplantation : official journal of the American Society of Transplantation and the American Society of Transplant Surgeons*. Nov 2009;9 Suppl 3:S1-155.
6. Papadopoulou A, Gerdemann U, Katari UL, et al. Activity of broad-spectrum T cells as treatment for AdV, EBV, CMV, BKV, and HHV6 infections after HSCT. *Science translational medicine*. Jun 25 2014;6(242):242ra283.
7. Haque T, Amlot PL, Helling N, et al. Reconstitution of EBV-specific T cell immunity in solid organ transplant recipients. *Journal of immunology (Baltimore, Md. : 1950)*. Jun 15 1998;160(12):6204-6209.

8. Khanna R, Bell S, Sherritt M, et al. Activation and adoptive transfer of Epstein-Barr virus-specific cytotoxic T cells in solid organ transplant patients with posttransplant lymphoproliferative disease. *Proceedings of the National Academy of Sciences of the United States of America*. Aug 31 1999;96(18):10391-10396.
9. Savoldo B, Goss JA, Hammer MM, et al. Treatment of solid organ transplant recipients with autologous Epstein Barr virus-specific cytotoxic T lymphocytes (CTLs). *Blood*. Nov 1 2006;108(9):2942-2949.
10. Macesic N, Langsford D, Nicholls K, et al. Adoptive T cell immunotherapy for treatment of ganciclovir-resistant cytomegalovirus disease in a renal transplant recipient. *American journal of transplantation : official journal of the American Society of Transplantation and the American Society of Transplant Surgeons*. Mar 2015;15(3):827-832.
11. Gerdemann U, Keirnan JM, Katari UL, et al. Rapidly generated multivirus-specific cytotoxic T lymphocytes for the prophylaxis and treatment of viral infections. *Molecular therapy : the journal of the American Society of Gene Therapy*. Aug 2012;20(8):1622-1632.
12. Orio J, Carli C, Janelle V, et al. Early exposure to interleukin-21 limits rapidly generated anti-Epstein-Barr virus T cell line differentiation. *Cytotherapy*. Apr 2015;17(4):496-508.
13. Janelle V, Carli C, Taillefer J, Orio J, Delisle JS. Defining novel parameters for the optimal priming and expansion of minor histocompatibility

antigen-specific T cells in culture. *Journal of translational medicine*. 2015;13:123.

14. Harden JL, Hamm D, Gulati N, Lowes MA, Krueger JG. Deep Sequencing of the T cell Receptor Repertoire Demonstrates Polyclonal T cell Infiltrates in Psoriasis. *F1000Research*. 2015;4:460.

15. Chen Y, Trofe J, Gordon J, et al. Interplay of cellular and humoral immune responses against BK virus in kidney transplant recipients with polyomavirus nephropathy. *Journal of virology*. Apr 2006;80(7):3495-3505.

16. Mueller K, Schachtner T, Sattler A, et al. BK-VP3 as a new target of cellular immunity in BK virus infection. *Transplantation*. Jan 15 2011;91(1):100-107.

17. Comoli P, Labirio M, Basso S, et al. Infusion of autologous Epstein-Barr virus (EBV)-specific cytotoxic T cells for prevention of EBV-related lymphoproliferative disorder in solid organ transplant recipients with evidence of active virus replication. *Blood*. Apr 1 2002;99(7):2592-2598.

18. Heather JM, Best K, Oakes T, et al. Dynamic Perturbations of the T cell Receptor Repertoire in Chronic HIV Infection and following Antiretroviral Therapy. *Frontiers in immunology*. 2015;6:644.

19. Ohga S, Kimura N, Takada H, et al. Restricted diversification of T cells in chronic active Epstein-Barr virus infection: potential inclination to T-lymphoproliferative disease. *American journal of hematology*. May 1999;61(1):26-33.

20. Khan N, Shariff N, Cobbold M, et al. Cytomegalovirus seropositivity drives the CD8 T cell repertoire toward greater clonality in healthy elderly individuals. *Journal of immunology (Baltimore, Md. : 1950)*. Aug 15 2002;169(4):1984-1992.
21. Huang L, Langerak AW, Wolvers-Tettero IL, et al. End stage renal disease patients have a skewed T cell receptor Vbeta repertoire. *Immunity ageing : I A*. 2015;12:28.
22. Comoli P, Basso S, Azzi A, et al. Dendritic cells pulsed with polyomavirus BK antigen induce ex vivo polyoma BK virus-specific cytotoxic T cell lines in seropositive healthy individuals and renal transplant recipients. *Journal of the American Society of Nephrology : JASN*. Dec 2003;14(12):3197-3204.
23. Koning D, Costa AI, Hasrat R, et al. In vitro expansion of antigen-specific CD8(+) T cells distorts the T cell repertoire. *Journal of immunological methods*. Mar 2014;405:199-203.
24. Greiner TC. Clinical use of next-generation sequencing of TRG gene rearrangements has arrived. *American journal of clinical pathology*. Mar 2014;141(3):302-304.
25. van der Waart AB, van de Weem NM, Maas F, et al. Inhibition of Akt signaling promotes the generation of superior tumor-reactive T cells for adoptive immunotherapy. *Blood*. Nov 27 2014;124(23):3490-3500.
26. Delisle JS, Gaboury L, Belanger MP, Tasse E, Yagita H, Perreault C. Graft-versus-host disease causes failure of donor hematopoiesis and

lymphopoiesis in interferon-gamma receptor-deficient hosts. *Blood*. Sep 1 2008;112(5):2111-2119.

27. Blyth E, Clancy L, Simms R, et al. BK virus-specific T cells for use in cellular therapy show specificity to multiple antigens and polyfunctional cytokine responses. *Transplantation*. Nov 27 2011;92(10):1077-1084.

28. Dasari V, Schuessler A, Smith C, et al. Prophylactic and therapeutic adenoviral vector-based multivirus-specific T cell immunotherapy for transplant patients. *Molecular therapy. Methods & clinical development*. 2016;3:16058.

29. Gattinoni L, Klebanoff CA, Restifo NP. Paths to stemness: building the ultimate antitumour T cell. *Nature reviews. Cancer*. Oct 2012;12(10):671-684.

30. Wherry EJ, Teichgraber V, Becker TC, et al. Lineage relationship and protective immunity of memory CD8 T cell subsets. *Nature immunology*. Mar 2003;4(3):225-234.

31. Gottschalk S, Rooney CM. Adoptive T cell Immunotherapy. *Current topics in microbiology and immunology*. 2015;391:427-454.

32. Haque T, Wilkie GM, Jones MM, et al. Allogeneic cytotoxic T cell therapy for EBV-positive posttransplantation lymphoproliferative disease: results of a phase 2 multicenter clinical trial. *Blood*. Aug 15 2007;110(4):1123-1131.

33. Leen AM, Bollard CM, Mendizabal AM, et al. Multicenter study of banked third-party virus-specific T cells to treat severe viral infections after hematopoietic stem cell transplantation. *Blood*. Jun 27 2013;121(26):5113-5123.

34. Prockop S DE, Sauter C, Suser S, O'Reilly R. Banked EBV-Specific T cells for Treatment of Rituximab Refractory EBV+ B-Cell Lymphoma in Solid Organ Transplantation Recipients. *American journal of transplantation : official journal of the American Society of Transplantation and the American Society of Transplant Surgeons*. 2016;16(suppl 3).

Figure 1

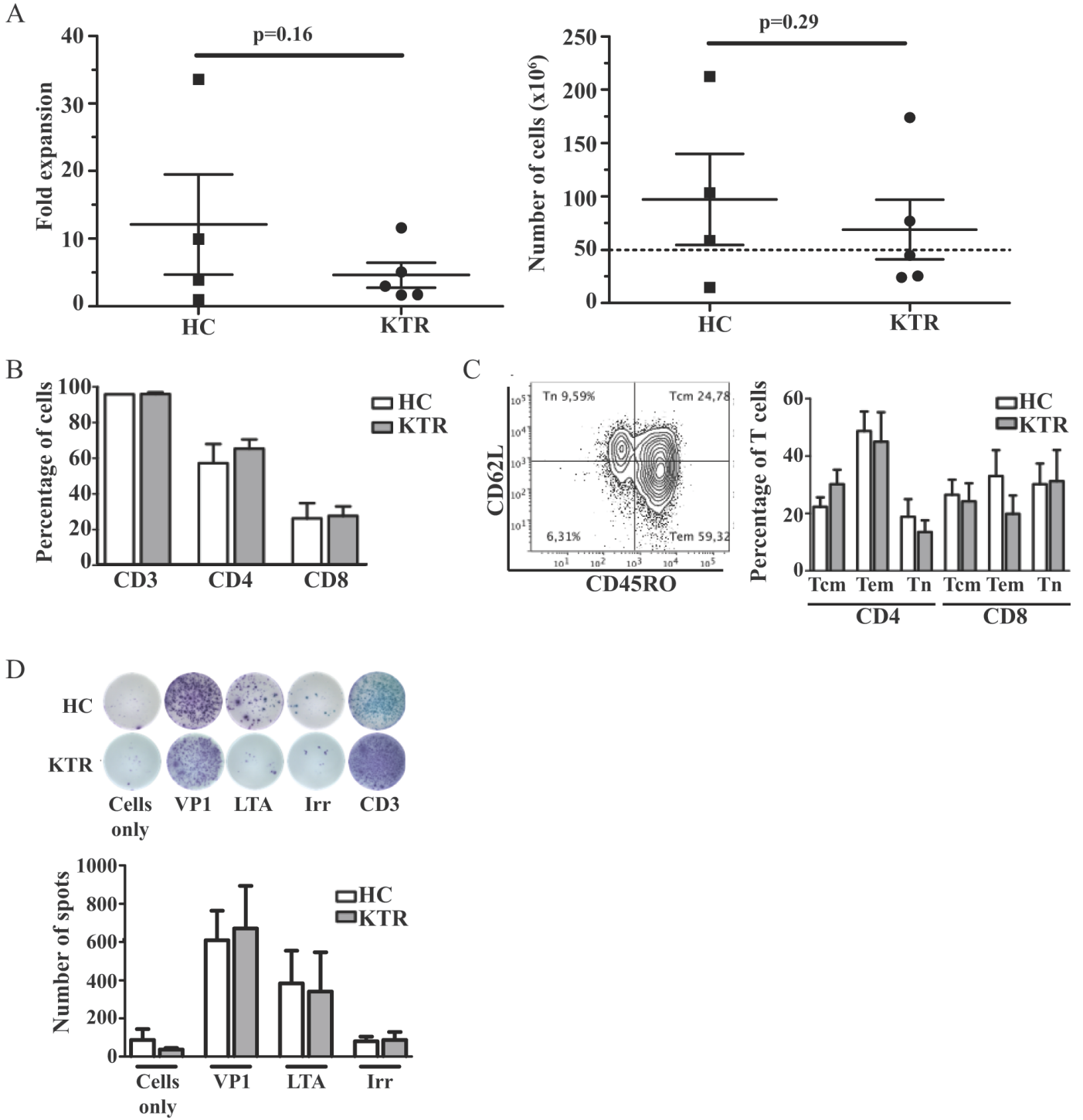
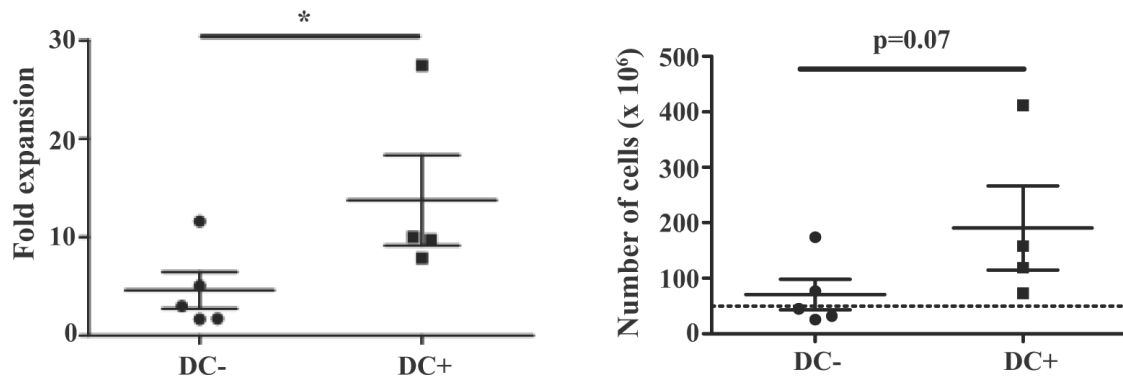
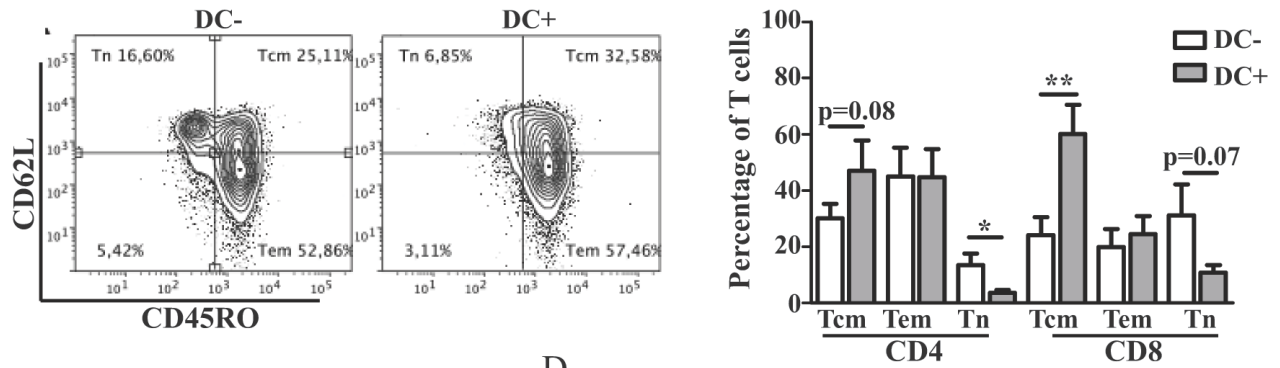


Figure 2

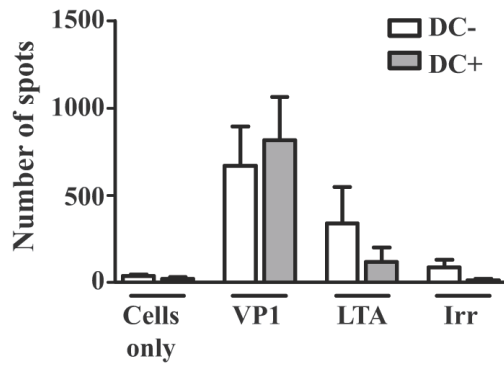
A



B



C



D

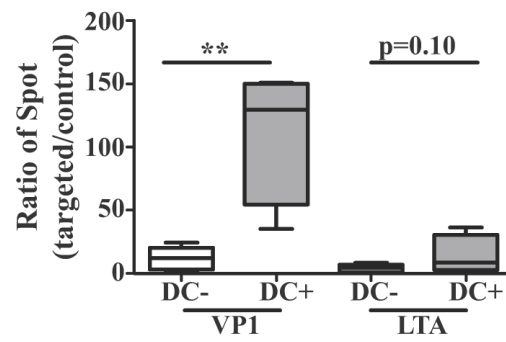


Figure 3

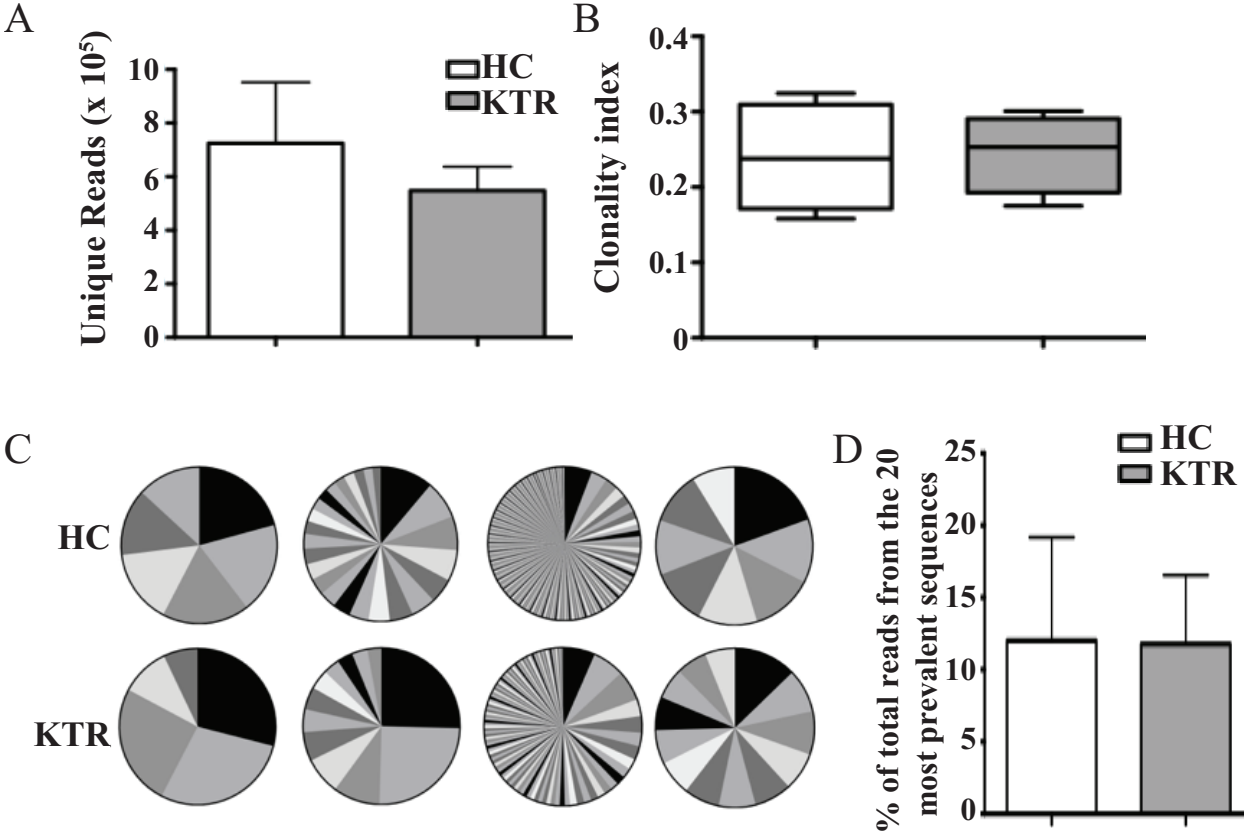
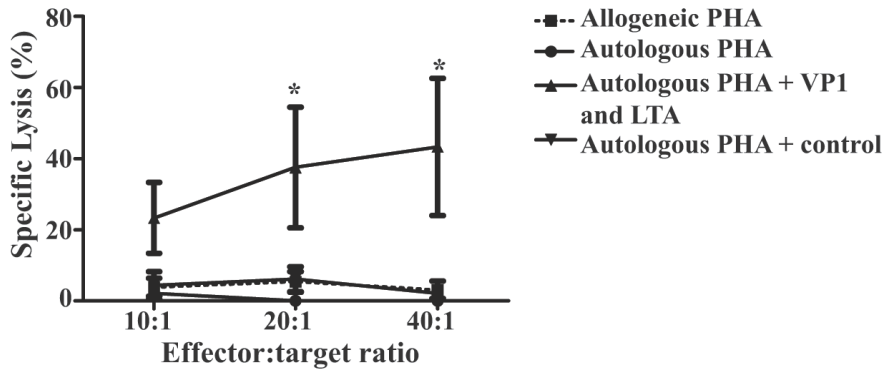
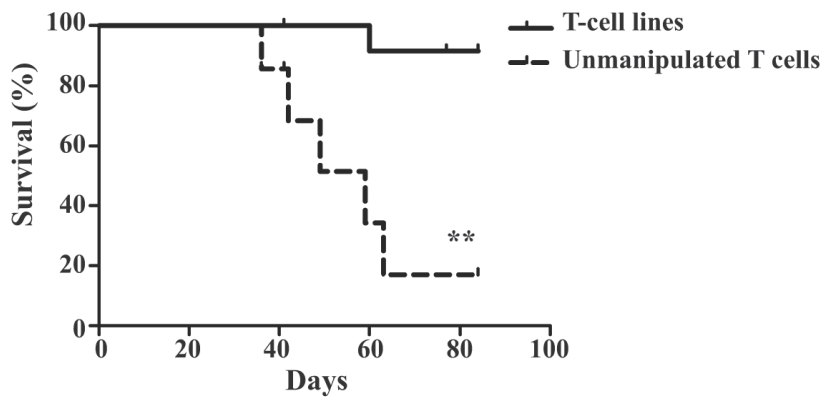


Figure 4

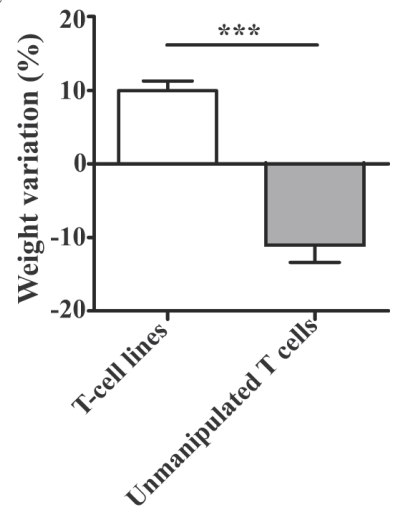
A



B



C



D

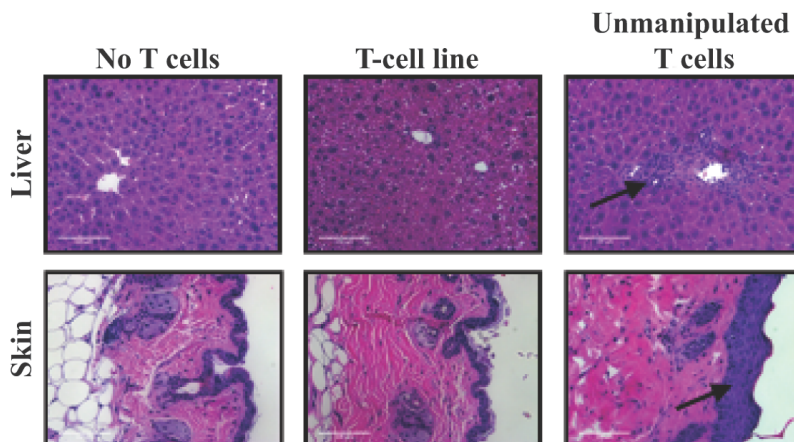
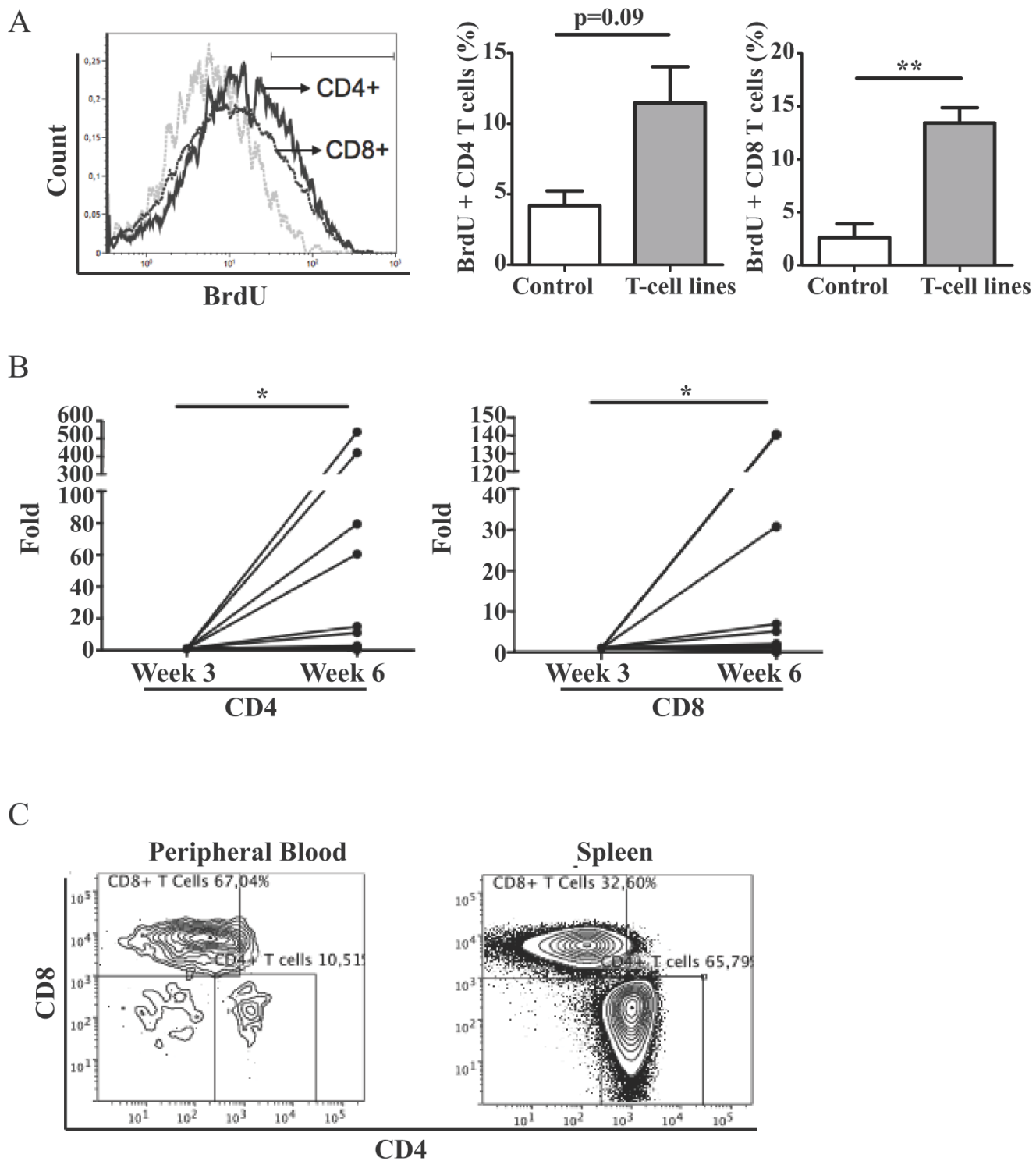


Figure 5

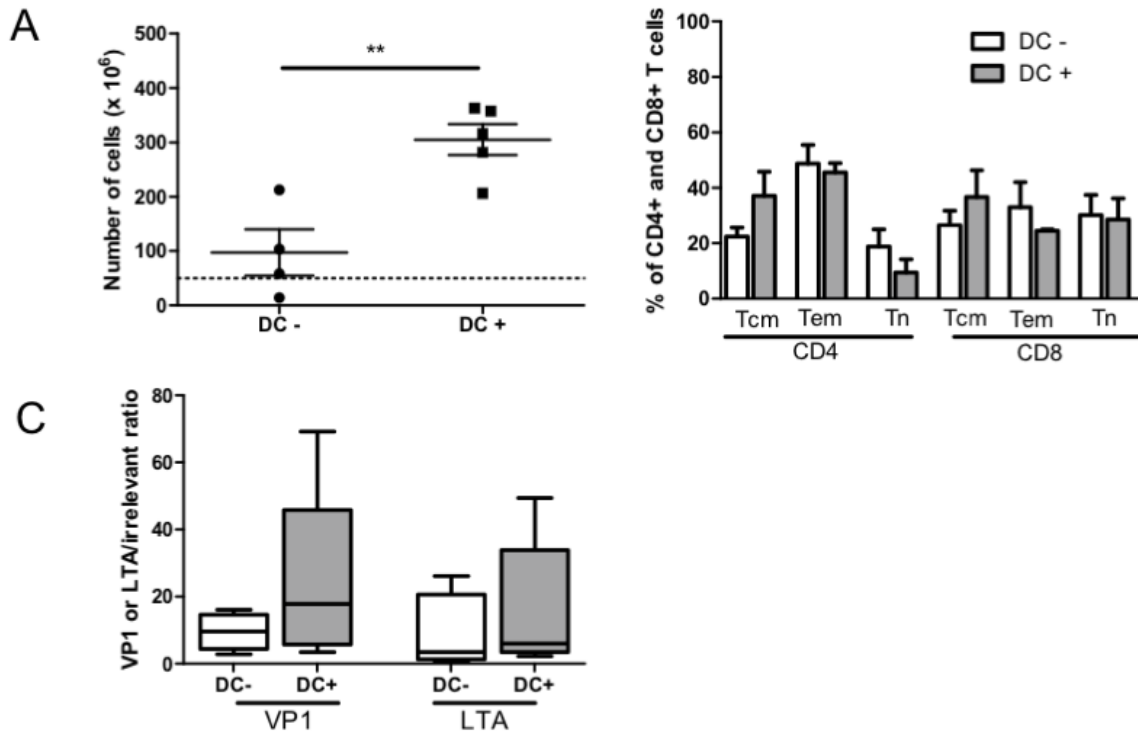


Supplementary Table 1.

Number of patients (n)	8
Age at the time of the transplant, mean (SD)	48.9 (8.3)
Sex, male (%)	100
Donor type; Deceased/ Living donor	6/2
Original disease (n)	
- Polycystic kidney disease	3
- Diabetic nephropathy	1
- Membrano-proliferative glomerulonephritis	1
- Reflux nephropathy	1
- Focal segmental glomerulosclerosis	1
- IgA nephropathy	1
Induction (n)	
- Basiliximab	6
- Anti-thymocyte globulin	2
Maintenance immunosuppression (n)	
- Prednisone, tacrolimus and mycophenolate mofetil	8
Immunosuppression (n) at the time of blood sampling	
- Prednisone, tacrolimus and mycophenolate mofetil	3
- Prednisone and tacrolimus	3
- Prednisone, cyclosporine, azathioprin	1
- Prednisone and cyclosporine	1
HLA mismatches (A, B and DR), mean (SD)	3.9 (1.2)
CPRA at the time of transplant, mean (SD)	22.9 (37.0)
Renal function at the time of blood sampling	
- Creatinine ($\mu\text{mol/L}$), mean (SD)	153 (51)
- Estimated GFR (CKD-EPI), mean (SD)	52 (20)
History of acute rejection (n)	
- None	6
- Borderline	1
- Acute cellular rejection	1
Transplant number: (n)	
- First transplant	6
- Second transplant	2
Time between transplant and first positive viremia, months, mean (SD)	3.8 (2.8)
Pic BK viremia, mean (SD)	1.6×10^5 (1.4×10^5)
Definitive PVAN (n)	6
Presumptive PVAN (n)	2
Viremia duration at the first blood sampling, months, mean (SD)	19.3 (24.1)

SD, Standard Deviation; CPRA, Calculated Panel Reactive Antibodies; PVAN, polyomavirus-associated nephropathy

Supplementary Figure 1.



Supplementary Figure 1. Effect of DC stimulation on T cell expansion, differentiation and specificity in healthy donors

Comparison of T-cell lines from healthy donors without (DC-, n=4) and with dendritic cell stimulation (DC+, n=5) at the end of the 14-days culture. A) Absolute cell number at the end of the 14-days culture, $p=0.002$. B) CD4+ and CD8+ T cell differentiation profile, as defined by CD45RO and CD62L expression. C) Comparison of ELISpot ratios of the number of spots after VP1 and LTA stimulation on the number after an irrelevant peptide library stimulation (hexon from adenovirus) between both groups, mean (SEM), $p=0.157$ for VP1 and $p=0.258$ for LTA.

DISCUSSION ET PERSPECTIVES

Nous avons donc réussi à adapter et valider un protocole se conformant aux exigences cliniques et nous permettant de générer rapidement des lignées cellulaires de lymphocytes T BK-spécifiques à partir du sang de patients greffés virémiques et immunosupprimés. Bien que comparables aux lignées cellulaires obtenues à partir de donneurs sains, ces lignées avaient une tendance vers une moins bonne expansion cellulaire. L'ajout d'une stimulation à l'aide de cellules dendritiques comme cellules présentatrices d'antigènes nous a permis d'améliorer l'expansion cellulaire, le statut de différenciation et la spécificité. De plus, les lignées cellulaires obtenues à partir de sang de donneurs sains et de greffés se sont avérées polyclonales et aucune différence n'a pu être détectée entre les deux groupes. Malgré cette polyclonalité, les lignées n'ont pas démontré d'alloréactivité significative *in vivo* et *in vitro*. Finalement, nous avons démontré que les cellules injectées peuvent persister et proliférer *in vivo* avec et même sans stimulation cytokinique. Le protocole que nous avons adapté est donc prêt à être transféré en clinique. Cependant, plusieurs éléments seront à prendre en considération lors du transfert clinique.

Disparité des HLA

En transplantation rénale, les HLA ne sont que rarement jumelés. En effet, selon les règles d'attribution des greffons de Transplant Québec, seulement une petite partie des points est accordée au jumelage des HLA. En effet, un maximum de 4 points est accordé pour un jumelage en HLA-DR et un maximum de 8 points est donné pour un jumelage parfait en HLA-A, B et DR, comparativement à un maximum de 18 points pour un patient étant en dialyse depuis 10 ans (71).

Une plus grande disparité entre le donneur et le receveur est un facteur de risque assez bien établi de néphropathie associée au polyomavirus (22, 72). Cela peut s'expliquer par une discordance entre les HLA du receveur et ceux des cellules rénales présentant les antigènes viraux, mais également par une plus grande immunosuppression de ces patients, soit en prévention ou en traitement d'un rejet. Cela pourrait donc également influencer l'efficacité des lignées cellulaires. En contrepartie, l'immunité du receveur demeure la pierre angulaire du traitement de la néphropathie, même chez ces patients, puisque la réduction de l'immunosuppression est le meilleur traitement. De plus, l'apparition de lymphocytes T spécifiques pour le BK virus coïncide normalement avec une amélioration de la fonction du greffon et une résolution de la virémie (73-75). Dans un cas de disparité totale entre les HLA du donneur et du receveur, les lymphocytes T spécifiques pourraient tout de même empêcher la propagation virale à d'autres organes HLA concordants, tels que la vessie. De plus, les CD4+ activés pourraient aider à l'activation de cellules comme les macrophages et les lymphocytes B pouvant agir de façon HLA-indépendantes.

Plusieurs épitopes immunogènes ont été décrits pour le polyomavirus BK, principalement pour les protéines VP1 et LTA. Bien qu'ils peuvent parfois être présentés par plus d'un HLA, ils sont généralement HLA-restreints (76). Considérant la disparité des HLA en transplantation rénale, la stimulation de lymphocytes T à l'aide de peptides uniques (ou la combinaison de quelques-uns) devrait être individualisée à chaque patient selon les concordances de HLA entre le donneur et le

receveur. Bien que faisable, cette méthode est beaucoup plus complexe que l'utilisation de bibliothèques peptidiques, permettant d'appliquer un protocole unique à un ensemble de patients.

De base, Comoli *et al.* ont démontré que les patients transplantés rénaux semblent avoir une plus faible prévalence de lymphocyte T BK-spécifiques comparativement à des donneurs sains (73), pouvant être une conséquence de l'immunosuppression. De plus, les infections chroniques telles que le HIV (77), l'EBV (78) et le CMV (79) ainsi que l'IRT (80) pourraient entraîner une restriction du répertoire TCR. Malgré ces différences avec les donneurs sains, notre analyse du TCR gamma a démontré une polyclonalité similaire entre les deux groupes. Cela suggère que notre processus ne favorise pas l'émergence de clone unique et que le répertoire de base du donneur BK n'est pas déficient comparativement à celui des donneurs sains. Finalement, cela évoque la possibilité que nos lignées pourraient être réactives à des épitopes présentés par plusieurs HLA, y compris les HLA concordants, favorisant ainsi un plus grand potentiel thérapeutique.

Support technique

Une des grande barrière à l'utilisation à large échelle de cette technologie est la nécessité de centre de thérapie cellulaire spécialisé. Au Canada, seulement deux centres ont présentement l'accréditation FACT (Foundation for the accreditation of cellular therapy) leur permettant d'utiliser des cellules plus que minimalement manipulées, soit le Centre d'Excellence en Thérapie Cellulaire de l'Hôpital

Maisonneuve-Rosemont et le Manitoba Blood & marrow Transplant Program à Winnipeg (81). Devant cette barrière logistique, les deux solutions possible pouvant permettre l'application de cette thérapie à large échelle est le développement de réseaux de collaborations, pouvant être envisagés à court terme, et le développement de nouveaux centres de thérapie cellulaire, qui est l'objectif à long terme. De plus, l'expansion de l'immunothérapie adoptive, telle que vécue en oncologie dans les dernières années, stimulera les innovations permettant de simplifier et de rendre plus accessibles ces thérapies.

Survie des lignées

En transplantation d'organe solide, où l'immunosuppression doit être continuée, la survie des lignées cellulaires sera diminuée. Dans une étude utilisant des lignées EBV-spécifiques en prévention de PTLD chez les patients à risque, les ELISpot sont retournés au niveau préinfusion en 2 à 6 mois, ce qui est inférieur aux patients après greffe de moelle (59). Cependant, le traitement semble avoir été efficace cliniquement, puisqu'aucun patient n'a développé de PTLD et les deux patients avec PTLD ont eu une réponse au moins partielle (59).

De plus, la différenciation mémoire de ces lignées n'avaient pas été étudiée (59) et une maximisation du nombre de Tcm ou de Tscm pourrait améliorer la survie des lignées virus-spécifiques. La modification génétique de ces lignées pourrait également être une avenue intéressante afin d'améliorer la survie des lignées. Si ces méthodes ne sont pas suffisantes, les stratégies alternatives comprennent d'infuser

plus d'une dose au patient ou de combiner les stratégies comme une diminution de l'immunosuppression ou l'utilisation d'agents anti-viraux à l'immunothérapie adoptive.

Modification génétique des lignées cellulaires

L'immunothérapie adoptive s'inscrit dans une tangente vers une médecine plus personnalisée. Afin d'améliorer le produit cellulaire, il est possible de modifier les conditions de cultures ou encore de modifier génétiquement les lignées cellulaires. Cette dernière approche est très intéressante puisqu'elle ouvre la porte à des possibilités quasi infinies.

Tout d'abord, l'expression transgénique d'IL-2 (82, 83), d'IL15 (83, 84) et du récepteur alpha de l'IL-7 (85, 86) pourraient permettre d'améliorer l'expansion et la persistance des cellules, sans en altérer la spécificité. Une surexpression transgénique d'IL-12 augmente l'efficacité des cellules, mais en diminue la survie (87). Cette approche est donc à écarter dans un modèle d'infection latente et pourrait même être toxique à haute dose (88).

Afin d'utiliser les molécules de co-stimulation à notre avantage (signal 2), il est possible de modifier certains régulateurs inhibiteurs de l'activation du lymphocyte T. Par exemple, nous pouvons jumeler le domaine extracellulaire et transmembranaire du CTLA4 à un domaine cytoplasmique CD38 (89), abroger l'expression de Cbl-b ou de SHP-1 (90, 91) ou encore convertir PD-1 en un récepteur activateur en échangeant sa queue cytoplasmique pour celle de CD28 (92).

Afin d'optimiser la survie des lignées de lymphocytes T utilisées dans le traitement de patients soumis à une immunosuppression chronique, il est également possible de leur conférer une résistance aux immunosuppresseurs. Cela est maintenant possible pour les inhibiteurs de la calcineurine (93-95), l'acide mycophénolique (96, 97) et les inhibiteurs de mTor (98). Avec le même objectif, nous pouvons également moduler certains acteurs de l'apoptose tels que Bcl-2 (99), Bcl-X(L) (100), Bid (101) et Fas (102).

Le plus grand risque associé aux différentes approches mentionnées précédemment est l'immortalisation et la prolifération clonale de ces lignées. Cela a été décrit dans les lymphocytes exprimant IL-15 (103), IL-2 et son récepteur (104) et chez des souris transgéniques exprimant l'IL-15 (105). Afin de prévenir ou traiter ces complications, l'ajout d'un gène "suicide" inductible semble une solution prometteuse. Par exemple, il est possible d'induire une caspase 9 humaine modifiée inductible avec un dimérisateur chimique spécifique (83, 106-109), d'induire l'expression du CD20 afin de sensibiliser la cellule au rituximab (110, 111) ou d'utiliser un gène de thymidine kinase viral provenant de l'herpes simplex sensibilisant la cellule à l'effet du ganciclovir (112-115). Cependant, cette dernière protéine est immunogénique et pourrait diminuer la survie de la cellule (116). Il est également possible de transduire les cellules avec une variante de la thymidylate kinase humaine (tmpk) afin que les cellules soient tuées par une dose d'azidothymidine (AZT) (117) ou d'induire

l'expression d'un polypeptide EGFR tronqué sensibilisant la cellule au cetuximab (118).

Dans le contexte précis d'immunothérapie adoptive antivirale chez les greffés rénaux soumis à une infection chronique comme le polyomavirus BK, une des combinaisons de modifications génétiques avec le plus grand potentiel serait donc de conférer une résistance à un immunosuppresseur comme le tacrolimus en association avec un gène suicide comme la caspase 9 modifiée.

CONCLUSION

Pour l'instant, la néphropathie au polyomavirus BK est le reflet d'une immunosuppression globale et non spécifique. Le futur de la transplantation d'organe solide réside probablement en l'accomplissement d'un état de tolérance immune avec le greffon, ce qui permettrait d'éviter tous les effets secondaires non désirés des immunosuppresseurs, tels les infections et les néoplasies. En attendant, l'immunothérapie adoptive antivirale pour le polyomavirus BK est probablement la meilleure solution puisqu'elle ne met pas en péril la survie du greffon et elle utilise l'immunité cellulaire du patient que l'on sait être la clé du traitement. Nous avons développé un protocole de thérapie cellulaire très intéressant qui est prêt à être testé en clinique dans une étude de phase I/II qui pourrait résoudre cette problématique.

Finalement, en plus de transférer ce protocole en clinique, il serait très intéressant de l'améliorer grâce à une combinaison de modifications génétiques qui pourrait être de conférer un gène de résistance aux inhibiteurs de la calcineurine et un gène suicide afin de compenser en sécurité.

Références

1. Kidney Disease: Improving Global Outcomes (KDIGO) CKD Work Group. KDIGO 2012 Clinical Practice Guideline for the Evaluation and Management of Chronic Kidney Disease. *Kidney international*. 2013;Suppl.(3):1-150.
2. KDIGO clinical practice guideline for the care of kidney transplant recipients. *American journal of transplantation : official journal of the American Society of Transplantation and the American Society of Transplant Surgeons*. 2009;9 Suppl 3:S1-155.
3. Traitement du stade terminal de l'insuffisance organique au Canada, de 2004 à 2013 — rapport annuel du Registre canadien des insuffisances et des transplantations d'organes. 2015.
4. Société canadienne du cancer.
5. Wolfe RA, Ashby VB, Milford EL, Ojo AO, Ettenger RE, Agodoa LY, et al. Comparison of mortality in all patients on dialysis, patients on dialysis awaiting transplantation, and recipients of a first cadaveric transplant. *The New England journal of medicine*. 1999;341(23):1725-30.
6. Québec T. Statistiques officielles 2015. 2016.
7. Lamb KE, Lodhi S, Meier-Kriesche HU. Long-term renal allograft survival in the United States: a critical reappraisal. *American journal of transplantation : official journal of the American Society of Transplantation and the American Society of Transplant Surgeons*. 2011;11(3):450-62.
8. System UUSR. 2015 USRDS Annual Data Report : Chapter 7: Transplantation. *ESRDS in the United States*. 2015;2:227-38.

9. Huang Y, Rabb H, Womer KL. Ischemia-reperfusion and immediate T cell responses. *Cellular immunology*. 2007;248(1):4-11.
10. Nankivell BJ, Alexander SI. Rejection of the kidney allograft. *The New England journal of medicine*. 2010;363(15):1451-62.
11. Suchin EJ, Langmuir PB, Palmer E, Sayegh MH, Wells AD, Turka LA. Quantifying the frequency of alloreactive T cells in vivo: new answers to an old question. *Journal of immunology (Baltimore, Md : 1950)*. 2001;166(2):973-81.
12. Matzinger P. The danger model: a renewed sense of self. *Science (New York, NY)*. 2002;296(5566):301-5.
13. Gallucci S, Matzinger P. Danger signals: SOS to the immune system. *Current opinion in immunology*. 2001;13(1):114-9.
14. D'Alessandro AM, Pirsch JD, Knechtle SJ, Odorico JS, Van der Werf WJ, Collins BH, et al. Living unrelated renal donation: the University of Wisconsin experience. *Surgery*. 1998;124(4):604-10; discussion 10-1.
15. Matas AJ, Smith JM, Skeans MA, Lamb KE, Gustafson SK, Samana CJ, et al. OPTN/SRTR 2011 Annual Data Report: kidney. *American journal of transplantation : official journal of the American Society of Transplantation and the American Society of Transplant Surgeons*. 2013;13 Suppl 1:11-46.
16. Halloran PF. Immunosuppressive drugs for kidney transplantation. *The New England journal of medicine*. 2004;351(26):2715-29.
17. Ko KS, Cho DO, Ahn JH, Lee TW, Ihm CG, Chang SG, et al. Infections after renal transplantation. *Transplantation proceedings*. 1994;26(4):2072-4.

18. Snyder JJ, Israni AK, Peng Y, Zhang L, Simon TA, Kasiske BL. Rates of first infection following kidney transplant in the United States. *Kidney international*. 2009;75(3):317-26.
19. Karuthu S, Blumberg EA. Common infections in kidney transplant recipients. *Clinical journal of the American Society of Nephrology : CJASN*. 2012;7(12):2058-70.
20. Fishman JA. Infection in solid-organ transplant recipients. *The New England journal of medicine*. 2007;357(25):2601-14.
21. Stallone G, Infante B, Grandaliano G. Management and prevention of post-transplant malignancies in kidney transplant recipients. *Clinical kidney journal*. 2015;8(5):637-44.
22. Hirsch HH, Brennan DC, Drachenberg CB, Ginevri F, Gordon J, Limaye AP, et al. Polyomavirus-associated nephropathy in renal transplantation: interdisciplinary analyses and recommendations. *Transplantation*. 2005;79(10):1277-86.
23. Hu M, Wang YM, Wang Y, Zhang GY, Zheng G, Yi S, et al. Regulatory T cells in kidney disease and transplantation. *Kidney international*. 2016.
24. Wright GP, Ehrenstein MR, Stauss HJ. Regulatory T-cell adoptive immunotherapy: potential for treatment of autoimmunity. *Expert review of clinical immunology*. 2011;7(2):213-25.
25. Riddell SR, Watanabe KS, Goodrich JM, Li CR, Agha ME, Greenberg PD. Restoration of viral immunity in immunodeficient humans by the adoptive transfer of T cell clones. *Science (New York, NY)*. 1992;257(5067):238-41.
26. Walter EA, Greenberg PD, Gilbert MJ, Finch RJ, Watanabe KS, Thomas ED, et al. Reconstitution of cellular immunity against cytomegalovirus in recipients of

allogeneic bone marrow by transfer of T-cell clones from the donor. *The New England journal of medicine*. 1995;333(16):1038-44.

27. Heslop HE, Brenner MK, Rooney CM. Donor T cells to treat EBV-associated lymphoma. *The New England journal of medicine*. 1994;331(10):679-80.

28. Papadopoulos EB, Ladanyi M, Emanuel D, Mackinnon S, Boulad F, Carabasi MH, et al. Infusions of donor leukocytes to treat Epstein-Barr virus-associated lymphoproliferative disorders after allogeneic bone marrow transplantation. *The New England journal of medicine*. 1994;330(17):1185-91.

29. Rooney CM, Smith CA, Ng CY, Loftin S, Li C, Krance RA, et al. Use of gene-modified virus-specific T lymphocytes to control Epstein-Barr-virus-related lymphoproliferation. *Lancet (London, England)*. 1995;345(8941):9-13.

30. Doubrovina E, Oflaz-Sozmen B, Prockop SE, Kernan NA, Abramson S, Teruya-Feldstein J, et al. Adoptive immunotherapy with unselected or EBV-specific T cells for biopsy-proven EBV+ lymphomas after allogeneic hematopoietic cell transplantation. *Blood*. 2012;119(11):2644-56.

31. Heslop HE, Ng CY, Li C, Smith CA, Loftin SK, Krance RA, et al. Long-term restoration of immunity against Epstein-Barr virus infection by adoptive transfer of gene-modified virus-specific T lymphocytes. *Nature medicine*. 1996;2(5):551-5.

32. Rooney CM, Smith CA, Ng CY, Loftin SK, Sixbey JW, Gan Y, et al. Infusion of cytotoxic T cells for the prevention and treatment of Epstein-Barr virus-induced lymphoma in allogeneic transplant recipients. *Blood*. 1998;92(5):1549-55.

33. Gustafsson A, Levitsky V, Zou JZ, Frisan T, Dalianis T, Ljungman P, et al. Epstein-Barr virus (EBV) load in bone marrow transplant recipients at risk to develop

posttransplant lymphoproliferative disease: prophylactic infusion of EBV-specific cytotoxic T cells. *Blood*. 2000;95(3):807-14.

34. Gottschalk S, Ng CY, Perez M, Smith CA, Sample C, Brenner MK, et al. An Epstein-Barr virus deletion mutant associated with fatal lymphoproliferative disease unresponsive to therapy with virus-specific CTLs. *Blood*. 2001;97(4):835-43.

35. Keever-Taylor CA, Margolis D, Konings S, Sandford GR, Nicolette CA, Lawendowski C, et al. Cytomegalovirus-specific cytolytic T-cell lines and clones generated against adenovirus-pp65-infected dendritic cells. *Biology of blood and marrow transplantation : journal of the American Society for Blood and Marrow Transplantation*. 2001;7(5):247-56.

36. Peggs K, Verfuert S, Mackinnon S. Induction of cytomegalovirus (CMV)-specific T-cell responses using dendritic cells pulsed with CMV antigen: a novel culture system free of live CMV virions. *Blood*. 2001;97(4):994-1000.

37. Szmania S, Galloway A, Bruorton M, Musk P, Aubert G, Arthur A, et al. Isolation and expansion of cytomegalovirus-specific cytotoxic T lymphocytes to clinical scale from a single blood draw using dendritic cells and HLA-tetramers. *Blood*. 2001;98(3):505-12.

38. Einsele H, Roosnek E, Rufer N, Sinzger C, Riegler S, Loffler J, et al. Infusion of cytomegalovirus (CMV)-specific T cells for the treatment of CMV infection not responding to antiviral chemotherapy. *Blood*. 2002;99(11):3916-22.

39. Sili U, Huls MH, Davis AR, Gottschalk S, Brenner MK, Heslop HE, et al. Large-scale expansion of dendritic cell-primed polyclonal human cytotoxic T-lymphocyte

lines using lymphoblastoid cell lines for adoptive immunotherapy. *Journal of immunotherapy* (Hagerstown, Md : 1997). 2003;26(3):241-56.

40. Balduzzi A, Lucchini G, Hirsch HH, Basso S, Cioni M, Rovelli A, et al. Polyomavirus JC-targeted T-cell therapy for progressive multiple leukoencephalopathy in a hematopoietic cell transplantation recipient. *Bone marrow transplantation*. 2011;46(7):987-92.

41. Sun Q, Pollok KE, Burton RL, Dai LJ, Britt W, Emanuel DJ, et al. Simultaneous ex vivo expansion of cytomegalovirus and Epstein-Barr virus-specific cytotoxic T lymphocytes using B-lymphoblastoid cell lines expressing cytomegalovirus pp65. *Blood*. 1999;94(9):3242-50.

42. Hamel Y, Blake N, Gabrielsson S, Haigh T, Jooss K, Martinache C, et al. Adenovirally transduced dendritic cells induce bispecific cytotoxic T lymphocyte responses against adenovirus and cytomegalovirus pp65 or against adenovirus and Epstein-Barr virus EBNA3C protein: a novel approach for immunotherapy. *Human gene therapy*. 2002;13(7):855-66.

43. Hanley PJ, Cruz CR, Savoldo B, Leen AM, Stanojevic M, Khalil M, et al. Functionally active virus-specific T cells that target CMV, adenovirus, and EBV can be expanded from naive T-cell populations in cord blood and will target a range of viral epitopes. *Blood*. 2009;114(9):1958-67.

44. Papadopoulou A, Gerdemann U, Katari UL, Tzannou I, Liu H, Martinez C, et al. Activity of broad-spectrum T cells as treatment for AdV, EBV, CMV, BKV, and HHV6 infections after HSCT. *Science translational medicine*. 2014;6(242):242ra83.

45. Metes D, Storkus W, Zeevi A, Patterson K, Logar A, Rowe D, et al. Ex vivo generation of effective Epstein-Barr virus (EBV)-specific CD8+ cytotoxic T lymphocytes from the peripheral blood of immunocompetent Epstein Barr virus-seronegative individuals. *Transplantation*. 2000;70(10):1507-15.
46. Savoldo B, Cubbage ML, Durett AG, Goss J, Huls MH, Liu Z, et al. Generation of EBV-specific CD4+ cytotoxic T cells from virus naive individuals. *Journal of immunology (Baltimore, Md : 1950)*. 2002;168(2):909-18.
47. Popescu I, Macedo C, Zeevi A, Nellis J, Patterson KR, Logar A, et al. Ex vivo priming of naive T cells into EBV-specific Th1/Tc1 effector cells by mature autologous DC loaded with apoptotic/necrotic LCL. *American journal of transplantation : official journal of the American Society of Transplantation and the American Society of Transplant Surgeons*. 2003;3(11):1369-77.
48. Comoli P, Ginevri F, Maccario R, Frasson C, Valente U, Basso S, et al. Successful in vitro priming of EBV-specific CD8+ T cells endowed with strong cytotoxic function from T cells of EBV-seronegative children. *American journal of transplantation : official journal of the American Society of Transplantation and the American Society of Transplant Surgeons*. 2006;6(9):2169-76.
49. Emanuel DJ, Lucas KG, Mallory GB, Jr., Edwards-Brown MK, Pollok KE, Conrad PD, et al. Treatment of posttransplant lymphoproliferative disease in the central nervous system of a lung transplant recipient using allogeneic leukocytes. *Transplantation*. 1997;63(11):1691-4.

50. Haque T, Taylor C, Wilkie GM, Murad P, Amlot PL, Beath S, et al. Complete regression of posttransplant lymphoproliferative disease using partially HLA-matched Epstein Barr virus-specific cytotoxic T cells. *Transplantation*. 2001;72(8):1399-402.
51. Haque T, Wilkie GM, Taylor C, Amlot PL, Murad P, Iley A, et al. Treatment of Epstein-Barr-virus-positive post-transplantation lymphoproliferative disease with partly HLA-matched allogeneic cytotoxic T cells. *Lancet (London, England)*. 2002;360(9331):436-42.
52. Haque T, Wilkie GM, Jones MM, Higgins CD, Urquhart G, Wingate P, et al. Allogeneic cytotoxic T-cell therapy for EBV-positive posttransplantation lymphoproliferative disease: results of a phase 2 multicenter clinical trial. *Blood*. 2007;110(4):1123-31.
53. Barker JN, Doubrovina E, Sauter C, Jaroscak JJ, Perales MA, Doubrovin M, et al. Successful treatment of EBV-associated posttransplantation lymphoma after cord blood transplantation using third-party EBV-specific cytotoxic T lymphocytes. *Blood*. 2010;116(23):5045-9.
54. Leen AM, Bollard CM, Mendizabal AM, Shpall EJ, Szabolcs P, Antin JH, et al. Multicenter study of banked third-party virus-specific T cells to treat severe viral infections after hematopoietic stem cell transplantation. *Blood*. 2013;121(26):5113-23.
55. Haque T, Amlot PL, Helling N, Thomas JA, Sweny P, Rolles K, et al. Reconstitution of EBV-specific T cell immunity in solid organ transplant recipients. *Journal of immunology (Baltimore, Md : 1950)*. 1998;160(12):6204-9.
56. Khanna R, Bell S, Sherritt M, Galbraith A, Burrows SR, Rafter L, et al. Activation and adoptive transfer of Epstein-Barr virus-specific cytotoxic T cells in solid

organ transplant patients with posttransplant lymphoproliferative disease. Proceedings of the National Academy of Sciences of the United States of America. 1999;96(18):10391-6.

57. Savoldo B, Goss J, Liu Z, Huls MH, Doster S, Gee AP, et al. Generation of autologous Epstein-Barr virus-specific cytotoxic T cells for adoptive immunotherapy in solid organ transplant recipients. Transplantation. 2001;72(6):1078-86.

58. Comoli P, Labirio M, Basso S, Baldanti F, Grossi P, Furione M, et al. Infusion of autologous Epstein-Barr virus (EBV)-specific cytotoxic T cells for prevention of EBV-related lymphoproliferative disorder in solid organ transplant recipients with evidence of active virus replication. Blood. 2002;99(7):2592-8.

59. Savoldo B, Goss JA, Hammer MM, Zhang L, Lopez T, Gee AP, et al. Treatment of solid organ transplant recipients with autologous Epstein Barr virus-specific cytotoxic T lymphocytes (CTLs). Blood. 2006;108(9):2942-9.

60. Gattinoni L, Klebanoff CA, Restifo NP. Paths to stemness: building the ultimate antitumour T cell. Nature reviews Cancer. 2012;12(10):671-84.

61. Gett AV, Sallusto F, Lanzavecchia A, Geginat J. T cell fitness determined by signal strength. Nature immunology. 2003;4(4):355-60.

62. Sallusto F, Lenig D, Forster R, Lipp M, Lanzavecchia A. Two subsets of memory T lymphocytes with distinct homing potentials and effector functions. Nature. 1999;401(6754):708-12.

63. Klebanoff CA, Gattinoni L, Torabi-Parizi P, Kerstann K, Cardones AR, Finkelstein SE, et al. Central memory self/tumor-reactive CD8+ T cells confer superior

- antitumor immunity compared with effector memory T cells. Proceedings of the National Academy of Sciences of the United States of America. 2005;102(27):9571-6.
64. Lanzavecchia A, Sallusto F. Progressive differentiation and selection of the fittest in the immune response. Nature reviews Immunology. 2002;2(12):982-7.
65. Wherry EJ, Teichgraber V, Becker TC, Masopust D, Kaech SM, Antia R, et al. Lineage relationship and protective immunity of memory CD8 T cell subsets. Nature immunology. 2003;4(3):225-34.
66. Vaccari M, Trindade CJ, Venzon D, Zanetti M, Franchini G. Vaccine-induced CD8+ central memory T cells in protection from simian AIDS. Journal of immunology (Baltimore, Md : 1950). 2005;175(6):3502-7.
67. Gattinoni L, Klebanoff CA, Palmer DC, Wrzesinski C, Kerstann K, Yu Z, et al. Acquisition of full effector function in vitro paradoxically impairs the in vivo antitumor efficacy of adoptively transferred CD8+ T cells. The Journal of clinical investigation. 2005;115(6):1616-26.
68. Louis CU, Savoldo B, Dotti G, Pule M, Yvon E, Myers GD, et al. Antitumor activity and long-term fate of chimeric antigen receptor-positive T cells in patients with neuroblastoma. Blood. 2011;118(23):6050-6.
69. Berger C, Jensen MC, Lansdorp PM, Gough M, Elliott C, Riddell SR. Adoptive transfer of effector CD8+ T cells derived from central memory cells establishes persistent T cell memory in primates. The Journal of clinical investigation. 2008;118(1):294-305.

70. Gattinoni L, Lugli E, Ji Y, Pos Z, Paulos CM, Quigley MF, et al. A human memory T cell subset with stem cell-like properties. *Nature medicine*. 2011;17(10):1290-7.
71. Québec T. ATT-PON-104 version 4.
72. Thangaraju S, Gill J, Wright A, Dong J, Rose C, Gill J. Risk Factors for BK Polyoma Virus Treatment and Association of Treatment With Kidney Transplant Failure: Insights From a Paired Kidney Analysis. *Transplantation*. 2016;100(4):854-61.
73. Comoli P, Azzi A, Maccario R, Basso S, Botti G, Basile G, et al. Polyomavirus BK-specific immunity after kidney transplantation. *Transplantation*. 2004;78(8):1229-32.
74. Chakera A, Bennett S, Lawrence S, Morteau O, Mason PD, O'Callaghan CA, et al. Antigen-specific T cell responses to BK polyomavirus antigens identify functional anti-viral immunity and may help to guide immunosuppression following renal transplantation. *Clinical and experimental immunology*. 2011;165(3):401-9.
75. Schachtner T, Muller K, Stein M, Diezemann C, Sefrin A, Babel N, et al. BK virus-specific immunity kinetics: a predictor of recovery from polyomavirus BK-associated nephropathy. *American journal of transplantation : official journal of the American Society of Transplantation and the American Society of Transplant Surgeons*. 2011;11(11):2443-52.
76. Cioni M, Leboeuf C, Comoli P, Ginevri F, Hirsch HH. Characterization of Immunodominant BK Polyomavirus 9mer Epitope T Cell Responses. *American journal of transplantation : official journal of the American Society of Transplantation and the American Society of Transplant Surgeons*. 2016;16(4):1193-206.

77. Heather JM, Best K, Oakes T, Gray ER, Roe JK, Thomas N, et al. Dynamic Perturbations of the T-Cell Receptor Repertoire in Chronic HIV Infection and following Antiretroviral Therapy. *Frontiers in immunology*. 2015;6:644.
78. Ohga S, Kimura N, Takada H, Nagano M, Ohshima K, Nomura A, et al. Restricted diversification of T-cells in chronic active Epstein-Barr virus infection: potential inclination to T-lymphoproliferative disease. *American journal of hematology*. 1999;61(1):26-33.
79. Khan N, Shariff N, Cobbold M, Bruton R, Ainsworth JA, Sinclair AJ, et al. Cytomegalovirus seropositivity drives the CD8 T cell repertoire toward greater clonality in healthy elderly individuals. *Journal of immunology (Baltimore, Md : 1950)*. 2002;169(4):1984-92.
80. Huang L, Langerak AW, Wolvers-Tettero IL, Meijers RW, Baan CC, Litjens NH, et al. End stage renal disease patients have a skewed T cell receptor Vbeta repertoire. *Immunity ageing : I A*. 2015;12:28.
81. Foundation for the Accreditation of Cellular Therapy.
82. Liu K, Rosenberg SA. Transduction of an IL-2 gene into human melanoma-reactive lymphocytes results in their continued growth in the absence of exogenous IL-2 and maintenance of specific antitumor activity. *Journal of immunology (Baltimore, Md : 1950)*. 2001;167(11):6356-65.
83. Quintarelli C, Vera JF, Savoldo B, Giordano Attianese GM, Pule M, Foster AE, et al. Co-expression of cytokine and suicide genes to enhance the activity and safety of tumor-specific cytotoxic T lymphocytes. *Blood*. 2007;110(8):2793-802.

84. Hoyos V, Savoldo B, Quintarelli C, Mahendravada A, Zhang M, Vera J, et al. Engineering CD19-specific T lymphocytes with interleukin-15 and a suicide gene to enhance their anti-lymphoma/leukemia effects and safety. *Leukemia*. 2010;24(6):1160-70.
85. Vera JF, Hoyos V, Savoldo B, Quintarelli C, Giordano Attianese GM, Leen AM, et al. Genetic manipulation of tumor-specific cytotoxic T lymphocytes to restore responsiveness to IL-7. *Molecular therapy : the journal of the American Society of Gene Therapy*. 2009;17(5):880-8.
86. Perna SK, Pagliara D, Mahendravada A, Liu H, Brenner MK, Savoldo B, et al. Interleukin-7 mediates selective expansion of tumor-redirected cytotoxic T lymphocytes (CTLs) without enhancement of regulatory T-cell inhibition. *Clinical cancer research : an official journal of the American Association for Cancer Research*. 2014;20(1):131-9.
87. Kerkar SP, Muranski P, Kaiser A, Boni A, Sanchez-Perez L, Yu Z, et al. Tumor-specific CD8+ T cells expressing interleukin-12 eradicate established cancers in lymphodepleted hosts. *Cancer research*. 2010;70(17):6725-34.
88. Zhang L, Morgan RA, Beane JD, Zheng Z, Dudley ME, Kassim SH, et al. Tumor-infiltrating lymphocytes genetically engineered with an inducible gene encoding interleukin-12 for the immunotherapy of metastatic melanoma. *Clinical cancer research : an official journal of the American Association for Cancer Research*. 2015;21(10):2278-88.

89. Shin JH, Park HB, Oh YM, Lim DP, Lee JE, Seo HH, et al. Positive conversion of negative signaling of CTLA4 potentiates antitumor efficacy of adoptive T-cell therapy in murine tumor models. *Blood*. 2012;119(24):5678-87.
90. Stromnes IM, Blattman JN, Tan X, Jeevanjee S, Gu H, Greenberg PD. Abrogating Cbl-b in effector CD8(+) T cells improves the efficacy of adoptive therapy of leukemia in mice. *The Journal of clinical investigation*. 2010;120(10):3722-34.
91. Stromnes IM, Fowler C, Casamina CC, Georgopoulos CM, McAfee MS, Schmitt TM, et al. Abrogation of SRC homology region 2 domain-containing phosphatase 1 in tumor-specific T cells improves efficacy of adoptive immunotherapy by enhancing the effector function and accumulation of short-lived effector T cells in vivo. *Journal of immunology (Baltimore, Md : 1950)*. 2012;189(4):1812-25.
92. Prosser ME, Brown CE, Shami AF, Forman SJ, Jensen MC. Tumor PD-L1 co-stimulates primary human CD8(+) cytotoxic T cells modified to express a PD1:CD28 chimeric receptor. *Molecular immunology*. 2012;51(3-4):263-72.
93. Brewin J, Mancao C, Straathof K, Karlsson H, Samarasinghe S, Amrolia PJ, et al. Generation of EBV-specific cytotoxic T cells that are resistant to calcineurin inhibitors for the treatment of posttransplantation lymphoproliferative disease. *Blood*. 2009;114(23):4792-803.
94. De Angelis B, Dotti G, Quintarelli C, Huye LE, Zhang L, Zhang M, et al. Generation of Epstein-Barr virus-specific cytotoxic T lymphocytes resistant to the immunosuppressive drug tacrolimus (FK506). *Blood*. 2009;114(23):4784-91.

95. Ricciardelli I, Blundell MP, Brewin J, Thrasher A, Pule M, Amrolia PJ. Towards gene therapy for EBV-associated posttransplant lymphoma with genetically modified EBV-specific cytotoxic T cells. *Blood*. 2014;124(16):2514-22.
96. Yam P, Jensen M, Akkina R, Anderson J, Villacres MC, Wu J, et al. Ex vivo selection and expansion of cells based on expression of a mutated inosine monophosphate dehydrogenase 2 after HIV vector transduction: effects on lymphocytes, monocytes, and CD34+ stem cells. *Molecular therapy : the journal of the American Society of Gene Therapy*. 2006;14(2):236-44.
97. Jonnalagadda M, Brown CE, Chang WC, Ostberg JR, Forman SJ, Jensen MC. Engineering human T cells for resistance to methotrexate and mycophenolate mofetil as an in vivo cell selection strategy. *PloS one*. 2013;8(6):e65519.
98. Huye LE, Nakazawa Y, Patel MP, Yvon E, Sun J, Savoldo B, et al. Combining mTor inhibitors with rapamycin-resistant T cells: a two-pronged approach to tumor elimination. *Molecular therapy : the journal of the American Society of Gene Therapy*. 2011;19(12):2239-48.
99. Charo J, Finkelstein SE, Grewal N, Restifo NP, Robbins PF, Rosenberg SA. Bcl-2 overexpression enhances tumor-specific T-cell survival. *Cancer research*. 2005;65(5):2001-8.
100. Eaton D, Gilham DE, O'Neill A, Hawkins RE. Retroviral transduction of human peripheral blood lymphocytes with Bcl-X(L) promotes in vitro lymphocyte survival in pro-apoptotic conditions. *Gene therapy*. 2002;9(8):527-35.

101. Lei XY, Xu YM, Wang T, Xie QS, Jia LT, Wang LF, et al. Knockdown of human bid gene expression enhances survival of CD8+ T cells. *Immunology letters*. 2009;122(1):30-6.
102. Dotti G, Savoldo B, Pule M, Straathof KC, Biagi E, Yvon E, et al. Human cytotoxic T lymphocytes with reduced sensitivity to Fas-induced apoptosis. *Blood*. 2005;105(12):4677-84.
103. Hsu C, Hughes MS, Zheng Z, Bray RB, Rosenberg SA, Morgan RA. Primary human T lymphocytes engineered with a codon-optimized IL-15 gene resist cytokine withdrawal-induced apoptosis and persist long-term in the absence of exogenous cytokine. *Journal of immunology (Baltimore, Md : 1950)*. 2005;175(11):7226-34.
104. Yamada G, Kitamura Y, Sonoda H, Harada H, Taki S, Mulligan RC, et al. Retroviral expression of the human IL-2 gene in a murine T cell line results in cell growth autonomy and tumorigenicity. *The EMBO journal*. 1987;6(9):2705-9.
105. Fehniger TA, Suzuki K, VanDeusen JB, Cooper MA, Freud AG, Caligiuri MA. Fatal leukemia in interleukin-15 transgenic mice. *Blood cells, molecules & diseases*. 2001;27(1):223-30.
106. Iulucci JD, Oliver SD, Morley S, Ward C, Ward J, Dalgarno D, et al. Intravenous safety and pharmacokinetics of a novel dimerizer drug, AP1903, in healthy volunteers. *Journal of clinical pharmacology*. 2001;41(8):870-9.
107. Straathof KC, Pule MA, Yotnda P, Dotti G, Vanin EF, Brenner MK, et al. An inducible caspase 9 safety switch for T-cell therapy. *Blood*. 2005;105(11):4247-54.

108. Ramos CA, Asgari Z, Liu E, Yvon E, Heslop HE, Rooney CM, et al. An inducible caspase 9 suicide gene to improve the safety of mesenchymal stromal cell therapies. *Stem cells (Dayton, Ohio)*. 2010;28(6):1107-15.
109. Di Stasi A, Tey SK, Dotti G, Fujita Y, Kennedy-Nasser A, Martinez C, et al. Inducible apoptosis as a safety switch for adoptive cell therapy. *The New England journal of medicine*. 2011;365(18):1673-83.
110. Introna M, Barbui AM, Bambiacioni F, Casati C, Gaipa G, Borleri G, et al. Genetic modification of human T cells with CD20: a strategy to purify and lyse transduced cells with anti-CD20 antibodies. *Human gene therapy*. 2000;11(4):611-20.
111. Serafini M, Manganini M, Borleri G, Bonamino M, Imberti L, Biondi A, et al. Characterization of CD20-transduced T lymphocytes as an alternative suicide gene therapy approach for the treatment of graft-versus-host disease. *Human gene therapy*. 2004;15(1):63-76.
112. Bonini C, Bondanza A, Perna SK, Kaneko S, Traversari C, Ciceri F, et al. The suicide gene therapy challenge: how to improve a successful gene therapy approach. *Molecular therapy : the journal of the American Society of Gene Therapy*. 2007;15(7):1248-52.
113. Ciceri F, Bonini C, Markt S, Zappone E, Servida P, Bernardi M, et al. Antitumor effects of HSV-TK-engineered donor lymphocytes after allogeneic stem-cell transplantation. *Blood*. 2007;109(11):4698-707.
114. Ciceri F, Bonini C, Stanghellini MT, Bondanza A, Traversari C, Salomoni M, et al. Infusion of suicide-gene-engineered donor lymphocytes after family haploidentical

haemopoietic stem-cell transplantation for leukaemia (the TK007 trial): a non-randomised phase I-II study. *The Lancet Oncology*. 2009;10(5):489-500.

115. Marin V, Cribioli E, Philip B, Tettamanti S, Pizzitola I, Biondi A, et al. Comparison of different suicide-gene strategies for the safety improvement of genetically manipulated T cells. *Human gene therapy methods*. 2012;23(6):376-86.

116. Berger C, Flowers ME, Warren EH, Riddell SR. Analysis of transgene-specific immune responses that limit the in vivo persistence of adoptively transferred HSV-TK-modified donor T cells after allogeneic hematopoietic cell transplantation. *Blood*. 2006;107(6):2294-302.

117. Sato T, Neschadim A, Konrad M, Fowler DH, Lavie A, Medin JA. Engineered human tmpk/AZT as a novel enzyme/prodrug axis for suicide gene therapy. *Molecular therapy : the journal of the American Society of Gene Therapy*. 2007;15(5):962-70.

118. Wang X, Chang WC, Wong CW, Colcher D, Sherman M, Ostberg JR, et al. A transgene-encoded cell surface polypeptide for selection, in vivo tracking, and ablation of engineered cells. *Blood*. 2011;118(5):1255-63.

119. Heslop HE, Slobod KS, Pule MA, Hale GA, Rousseau A, Smith CA, et al. Long-term outcome of EBV-specific T-cell infusions to prevent or treat EBV-related lymphoproliferative disease in transplant recipients. *Blood*. 2010;115(5):925-35.